



PILOTHOUSE

QUICKSILVER®
CAPTUR

WELCOME TO THE CAPTUR RANGE FROM QUICKSILVER.

Captur gives you the freedom of the water, the freedom to fish and the freedom to be spontaneous. Perfect for friends and serious fishermen – they offer everything you could need and more.

From day trippers to overnights, these boats let you seek out life rather than just let it happen – to enjoy life to the full: carefree and worry-free. Boats with all the power, comfort and practicality to get you out there. Life is more fun when you remove the obstacles. Life is for living, for remembering. It's a journey.

Seize the moment.

Explore our complete range of boats
and dealer network now at
www.quicksilver-boats.com

QUICKSILVER®





CONTENT

Introduction Captur Pilothouse	4
Smart Edition	5
NEW CAPTUR 905 PILOTHOUSE	6
CAPTUR 755 PILOTHOUSE	10
CAPTUR 675 PILOTHOUSE	14
CAPTUR 605 PILOTHOUSE	18
CAPTUR 555 PILOTHOUSE	22
Specifications & Packs	26

QUICKSILVER'S NEW **CAPTUR PILOTHOUSE** RANGE WELCOME TO FUN

Sure...our boats are designed for a great fishing experience. But we know that you use your boat with your family and friends as well. Our new Pilothouse range has been specifically designed to give you best-in-class features for optimal fishing and leisure combined with the comfort and style you have come to expect from Quicksilver.





THE SMART EDITION THE BEST WAY TO GET THE OPTIONS YOU NEED

People are different. So why should every boat be the same? We have designed our boats for optimal use, but we know that everybody has their own preferences. That's why we are introducing the Smart Edition. The Smart Edition gives you what you need: a variety of option sets that are most frequently requested by our customers. So you can be sure you get the options you want. They also save you an average of 10%-15% when compared to ordering options separately. Best of all, the Smart Edition has short delivery times and is probably already available at your local dealer right now – you'll be on the water before you know it.


Explore our complete range of boats and dealer network now at www.quicksilver-boats.com

905 PILOTHOUSE

THE PERFECT MIX FOR FISHING AND CRUISING COMFORT

The days you had to choose between comfort and performance, between fishing and cruising are gone. With the 905 Pilothouse you can have both! Designed without compromise for fishing, adventure & fun, and all in perfect safety and comfort.

The 905 Pilothouse is suited for offshore cruising (category B) and carries up to 10 people. It features a comprehensive fishing station, as well as overnighting capacity for up to 6 persons. Performance is safe and agile thanks to the Mercury engine offering, and power of up to 500 hp. means you get to the fish in almost no time at all. The 905 Pilothouse; why settle for less when you can have it all.



Length Overall (M)	8,88
Beam Maximum (M)	2,99
Height - Without Canvas (M)	3,32
Dry Weight (Kg)	3100
Fuel Capacity (L)	400
CE Design Category	B
Maximum Number of People	10
Maximum Power (HP/kW)	500/368

SAFETY

Designed for robust yet high-performance use both inshore and offshore, the 905 Pilothouse's precision engineered deep-V hull is ideal for both fishing and cruising in a variety of weather and sea conditions. The high-spec electronic pack, which includes a GPS for precise navigation, and a VHF for secure communication. The cabin offers a 360° visibility and dual pilothouse screen wipers and screen wash keep your view clean.

COMFORT

Fishing and comfort go hand in hand with the 905 Pilothouse both inside and outside the boat. The bow section and cockpit feature ample seating capacities, while the cockpit has an exterior flood light for night-time operation. Inside, the fully featured galley includes a sink and LPG stove, while the cabin gives easy access to a full size forward berth for 2 persons as well as a spacious aft berth configured for both single and dual accommodation. The fully separated head features an enclosed toilet as well as a pull-out shower.

FISHING

The 905 Pilothouse's large, well-appointed fishing cockpit is the serious angler's dream. The fish station comes with a sink, cutting board, cold water wash, knife holder, storage and rod holders, with the Fish Pack upgrade adding a livewell, raw water washdown, extra rod holders and in-cabin safe rod storage, refrigerator drawers and additional stainless steel rod holders. The entire station slides back at the touch of the button to maximise cockpit area. There are integrated fish lockers in the cockpit floor, an optional second helm station and integrated optional sun shade means there's no need to seek refuge from the sun.

STORAGE

Despite its impressive range of features, there's one thing the 905 Pilothouse doesn't lack and that is space. The cockpit has a large central storage as well as two fish lockers for holding your catch, as well as extra storage space in the fish station. Inside, you'll find storage in the dining area, in the galley and a large storage space under the berth in the cabin.

SMART EDITION

Be sure to get what you need: the Smart Edition is based on the options that are most frequently requested by our customers.



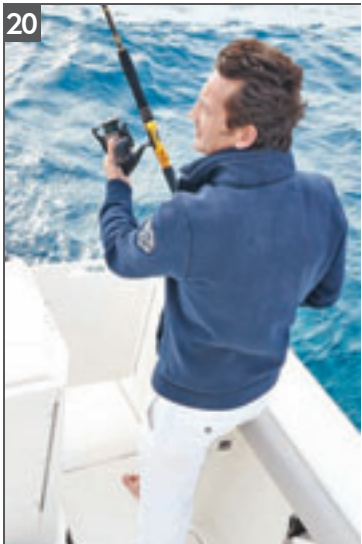
905 PILOTHOUSE



Sliding fishing station with sink & faucet, cutting board, knife holder, storage & rod holders



Dinette table with adaptable seat configuration convertible to berth



Transom door



Large fishing cockpit with fish lockers, port & starboard swim platforms, single or twin engine configuration (max 500 hp)



Galley with sink & tab with optional refrigerator, single burner stove and microwave



Bow seat with optional cushion

16



Full double berth with storage below berth

Helm with hydraulic steering, SmartCraft, optional 9" GPS/depth sounder, sonic-hub entertainment system and 12v outlet



13

MODEL FEATURES

1. Large fishing cockpit with fish lockers
2. Sliding fishing station with sink & faucet, cutting board, knife holder, storage & rod holders
3. Sliding aft seat & cockpit table (part of cruising pack, replaces fishing station)
4. Optional starboard & port flip down bench seats
5. Optional cockpit helm station & electronics
6. Access walkway to foredeck
7. Sliding side entry door to helm
8. Bow seat with optional cushion
9. Anchor locker & optional windlass
10. Pilot & Co-pilot Seat
11. Dinette table with adaptable seat configuration convertible to berth
12. Galley with sink & tab with optional refrigerator, single burner stove and microwave
13. Helm with hydraulic steering, SmartCraft, optional 9" GPS/depth sounder, sonic-hub entertainment system and 12v outlet
14. Wide steps to berths
15. Sliding cabin entry door
16. Full double berth with storage below berth
17. Head with enclosed sea toilet & pullout faucet/shower
18. Spacious aft berth with optional rod holder storage
19. Port & starboard swim platforms
20. Transom door
21. Single or twin engine configuration (max 500 hp)

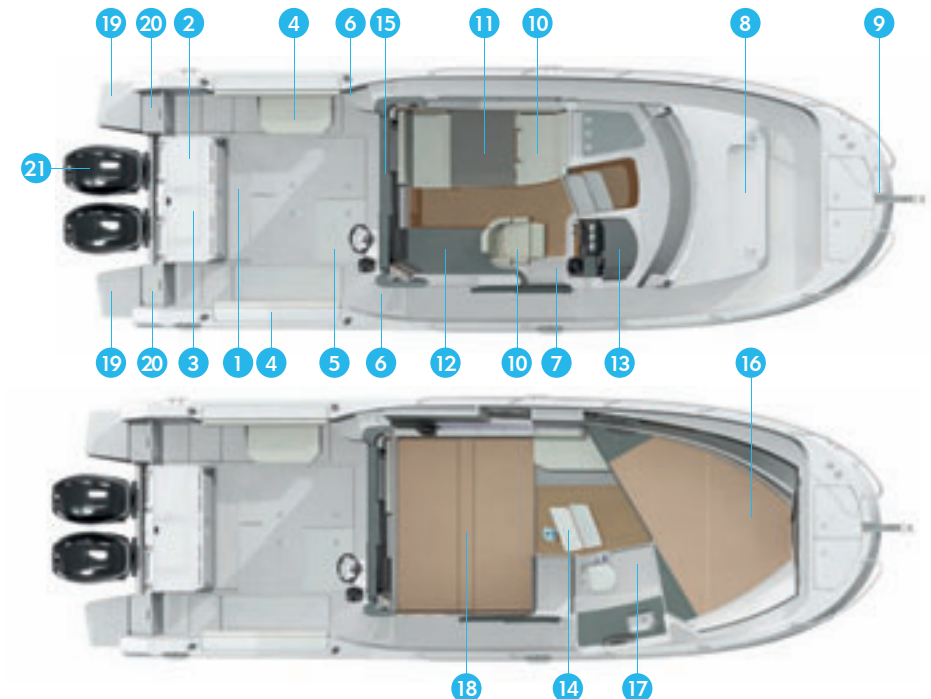


Head with enclosed sea toilet & pullout faucet/shower

Spacious aft berth with optional rod holder storage



18



CAPTUR 755 PILOTHOUSE

WHERE SERIOUS FISHING AND FAMILY FUN ARE ALL IN A DAY'S PLAY

A fishing trip is never going to be a rough and ready affair in this addition to the Pilothouse range. Combining the best fishing equipment package with a full interior double berth, the 755 brings fishing aficionados a real touch of luxury along with all the practical touches the seasoned boater would expect. Boasting the largest HP range, with single engine up to 250hp you'll be enjoying both speed and power.



Length Overall (M)	7,39
Beam Maximum (M)	2,79
Height - Without Canvas (M)	2,83
Dry Weight (Kg)	1800
Fuel Capacity (L)	300
CE Design Category	C
Maximum Number of People	8
Maximum Power (HP/kW)	250/186

CAPTUR 755 PILOTHOUSE

SAFETY

In addition to the standard features you would expect for trouble-free boating such as navigation lights, sturdy swim ladder and well-placed grab rails, this is the only boat in its class to offer an electronics package for the covered exterior second helm, providing GPS/chartplotter. An electrical windlass takes the strain out of weighing anchor, whilst a bow thruster makes for easier docking. Whenever you want to take to the water, swim platforms make access on and off the boat simple and safe.

COMFORT

Nothing has been left to chance in anticipating your comfort. Even before the rigours of a day's serious fishing, the full double berth looks enticingly restful. Meanwhile on deck the walkthrough transom, combined with triple forward facing interior seating and dedicated galley area ensures ease of movement, comfort and a spacious feel throughout. A special comfort pack option will provide pleasure-seekers with modern conveniences such as bow cushions, table, refrigerator and a cockpit shower. With the additional options of a seawater toilet and interior curtains you will have all the conveniences you need to enjoy your adventures afloat.

FISHING

This is where the 755 comes into its own, offering as it does the best fishing package with a premium livewell system, fishwell locker pumpout systems, additional rod holders and more. The fishing experience is maximised with the largest fishing cockpit, which allows for complete conversion thanks to flip-up flush-fitting seating to provide a clear area.

STORAGE

In addition to the luxury fish locker, our savvy designers have integrated a wealth of practical touches to facilitate storage of all fishing and leisure equipment.

SMART EDITION

Be sure to get what you need: the Smart Edition is based on the options that are most frequently requested by our customers. In addition to that you save an average of 10% when compared to ordering options separately and this edition is probably already available at your local dealer right now.



CAPTUR 755 PILOTHOUSE



Aft & port flip down bench seats, cockpit table, and cockpit shower as part of optional Cockpit Comfort Pack



Side entry door



Optional bait preparation station and 2 additional rod holders
Optional raw water washdown



Large fishing cockpit and optional port & starboard swim platforms



Foredeck anchor locker with optional forward windlass



Livewell

2



18

Double berth with storage below and berth cushions



16

3 cabin seats with slide/swivel & flip-up bolsters & optional table



17

Integrated helm with hydraulic steering, SmartCraft instrumentation, mounting area for optional 9" GPS/Depthfinder

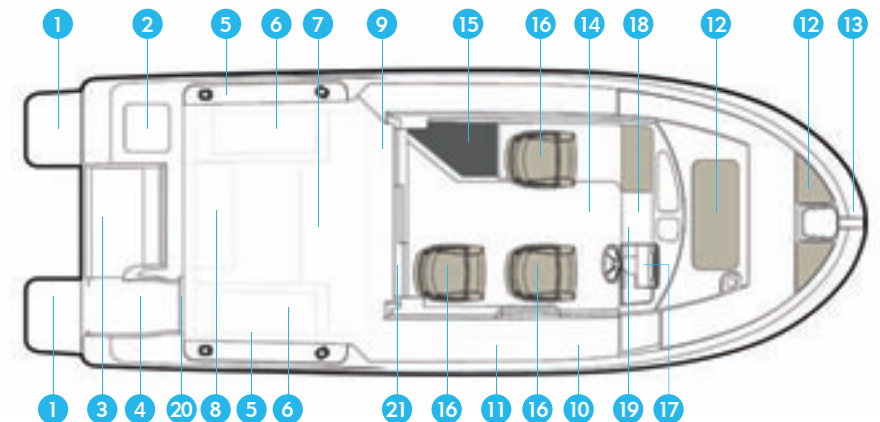


15

Dedicated galley with sink, fresh water system, stove and optional refrigerator

MODEL FEATURES

1. Large fishing cockpit and optional port & starboard swim platforms
2. Livewell
3. Optional bait preparation station and 2 additional rod holders
4. Walkthrough transom door
5. 2 rod storage racks (3 rods per side)
6. 2 fish lockers with standard drains and optional electric pumpout available with Fish Pack
7. Cockpit floor storage & battery access & cockpit service hatch
8. Aft & port flip down bench seats, cockpit table, and cockpit shower as part of optional Cockpit Comfort Pack
9. Sliding cabin entry door
10. Side entry door
11. Access walkway to foredeck
12. Bow seats with optional cushions
13. Foredeck anchor locker with optional forward windlass
14. Cabin floor lockers
15. Dedicated galley with sink, fresh water system, stove and optional refrigerator
16. 3 cabin seats with slide/swivel & flip-up bolsters & optional table
17. Integrated helm with hydraulic steering, SmartCraft instrumentation, mounting area for optional 9" GPS/Depthfinder
18. Double berth with storage and berth cushions
19. Optional seawater toilet
20. Optional raw water washdown
21. Optional cockpit helm and optional 7" second station electronics (GPS/Chartplotter) with weather cover



CAPTUR 675 PILOTHOUSE

PERFECT FOR A GREAT DAY OUT

Are you looking for great performance at an attractive price? The 675 Pilothouse contains an intelligently designed cockpit for comfort, coupled with class-leading space that is perfect for both fishing and leisure. The craft's maximum 200 horsepower engine will allow you to easily reach a cruising speed of 25 knots. And whether you want to relax with friends or get your line in the water, our SMART edition combines the right mix of Cockpit, Cabin and Fishing options for your needs—your boat will be perfectly suited to your lifestyle.



Length Overall (M)	6,55
Beam Maximum (M)	2,54
Height - Without Canvas (M)	2,79
Dry Weight (Kg)	1585
Fuel Capacity (L)	200
CE Design Category	C
Maximum Number of People	7
Maximum Power (HP/kW)	200/147

CAPTUR 675 PILOTHOUSE

SAFETY

The 675 Pilothouse is a ready-for-fun craft designed with safety in mind. High freeboards in the cockpit, safety rails, and easy bow access ensure a worry-free water experience with plenty of other safety options too. The helm provides 360° visibility, swim platforms allow your family and friends to get in and out of the water safely and easily, and an optional windlass ensures extra control – whether you want to leave in a hurry or stay exactly where you are.

COMFORT

Your comfort is our goal. The fully configurable cockpit space can be converted in a minute to seating and dining area with an optional comfort pack. In the cabin there is seating for four, and a convertible berth that sleeps two. A wide starboard walkaround allows easy bow access, and a sliding door provides shelter and quick availability to the rest of the boat. The handy galley with sink and cooker can be easily upgraded to include fresh water capabilities and a refrigerator. You can also enhance your craft with a dual helm station, sea toilet and colored hull.

FISHING

Ready for a great fishing experience? Prepare your bait at the dedicated station with an integrated cutting board. Then locate the best fishing location with your optional GPS/fish finder. Once you're there, grab your rods from the easily-accessible, rod holder, and get that hook in the water from the large cockpit or forward fishing platform.

STORAGE

The 675 Pilothouse combines a sense of space and freedom without sacrificing storage. Your fishing rods will fit perfectly in a lockable floor storage area. Lockers in the cockpit floor, a fully-lined storage area below the galley, and additional space under the berth and the aft bench seat provide a variety of safe, accessible locations for you to keep all of the things you need for fishing and fun.

SMART EDITION

Be sure to get what you need: the Smart Edition is based on the options that are most frequently requested by our customers. In addition to that you save an average of 15% when compared to ordering options separately and this edition is probably already available at your local dealer right now.



CAPTUR 675 PILOTHOUSE

12



Dedicated galley with optional fresh water system, stove and refrigerator as part of Cabin Comfort Pack

13 & 19



2 seats with slide/swivel & flip-up bolsters
Double wide bench seat with incorporated storage

14



Integrated helm with hydraulic steering, SmartCraft instrumentation, mounting area for optional GPS/Depthfinder/Stereo and 12v outlet

15



Double berth with storage below and berth cushions

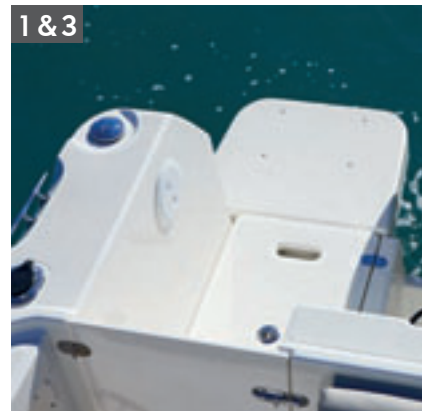
17



Optional cockpit helm and optional 7" second station electronics (GPS/Chartplotter networked to primary system) with weather cover

Optional port & starboard swim platforms, Walkthrough transom door

1 & 3



CAPTUR 675 PILOTHOUSE



Large fishing cockpit



Livewell



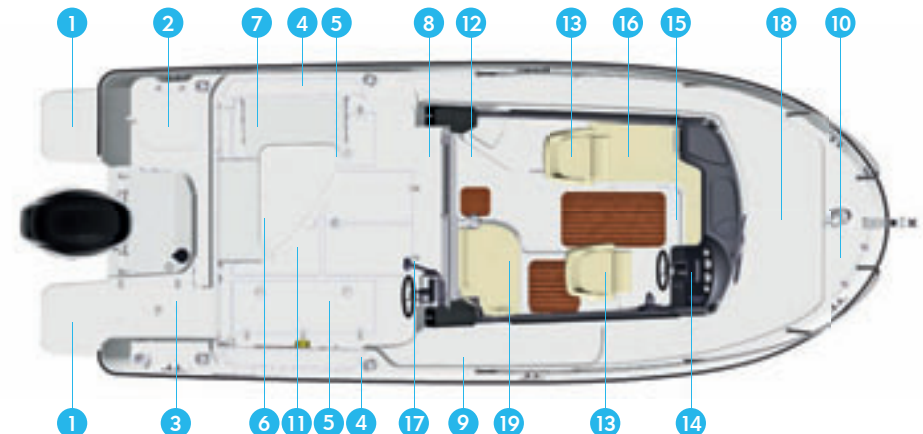
Aft & port flip down bench seats and cockpit table as part of optional Cockpit Comfort Pack

2 fish lockers with standard drains and optional port electric pumpout available with Fish Pack



MODEL FEATURES

1. Optional port & starboard swim platforms
2. Livewell
3. Walkthrough transom door
4. 2 rod storage racks (3 rods per side)
5. 2 fish lockers with standard drains and optional port electric pumpout available with Fish Pack
6. Cockpit floor storage & battery access & cockpit service hatch
7. Aft & port flip down bench seats and cockpit table as part of optional Cockpit Comfort Pack
8. Sliding cabin entry door
9. Access walkway & access to foredeck
10. Foredeck anchor locker with optional forward windlass
11. Large fishing cockpit
12. Dedicated galley with optional fresh water system, stove and refrigerator as part of Cabin Comfort Pack
13. 2 seats with slide/swivel & flip-up bolsters
14. Integrated helm with hydraulic steering, SmartCraft instrumentation, mounting area for optional 7" GPS/Depthfinder/Stereo and 12v outlet
15. Double berth with storage below and berth cushions
16. Optional seawater toilet
17. Optional cockpit helm and optional 7" second station electronics (GPS/Chartplotter networked to primary system) with weather cover
18. Bow area suitable for fishing
19. Double wide bench seat with incorporated storage



CAPTUR 605 PILOTHOUSE

GREAT VALUE, GREAT FUN

Are you passionate about fishing? Our 605 Pilothouse provides real value. The 115 horsepower engine and larger than average cockpit make it easy to get to the fish and get those rods over the side. Make it even easier with an optional second helm station with navigation electronics. And our SMART edition now combines the perfect mix of Cockpit, Cabin and Fishing options to ensure that your craft is suited to your specific lifestyle and needs.



Length Overall (M)	5,75
Beam Maximum (M)	2,54
Height - Without Canvas (M)	2,70
Dry Weight (Kg)	1345
Fuel Capacity (L)	160
CE Design Category	C
Maximum Number of People	6
Maximum Power (HP/kW)	150/110

CAPTUR 605 PILOTHOUSE

SAFETY

The 605 Pilothouse gives you such a good fishing experience you might not notice how safe it is! A hinged gate provides sea-height access to the transom. Starboard and port walkarounds provide fast accessibility to all areas of the boat. And a bow windlass option makes it easier than ever to drop anchor. The tempered glass windshield and large aft window with 360° visibility make it a breeze to see exactly where you are, and the best-dash-in-size range provides ample space for instrumentation and electronics to keep your journey on track.

COMFORT

Find all-weather protection in the cabin, with seating for two. Extra, easy-to-convert cockpit seating and dining area, offer you the possibility to relax outside. And after some intensive fishing, close the cabin curtains and grab a nap in the two-sleeper berth with fill-in cushions, and let the waves rock you to sleep.

FISHING

Expect plenty of cockpit space for you and your friends to enjoy great fishing moments. Store up to six rods below the coaming caps or in a secure and lockable floor storage area. Find the best fishing area with your optional GPS package and fish from the large cockpit. Then use the built-in lockers to store your catch until it's time to grill. The 605 Pilothouse – ideal for fishing with friends.

STORAGE

The 605 Pilothouse is all about a sense of freedom and open space on the water – no cluttered experience here. Rods and other storage items will fit easily in lockable floor areas or in the high freeboards. Your bait and fish will stay fresh in the livewell and fish locker. And with storage possibilities under the bench and storage lockers in the cockpit floor, you'll have plenty of space to move around with ease.

SMART EDITION

Be sure to get what you need: the Smart Edition is based on the options that are most frequently requested by our customers. In addition to that you save an average of 15% when compared to ordering options separately and this edition is probably already available at your local dealer right now.



CAPTUR 605 PILOTHOUSE

2&6



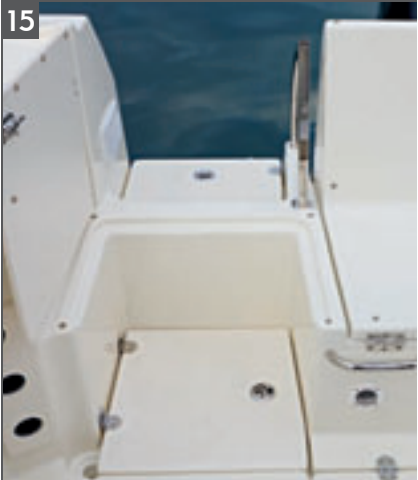
Full bench seat with motor cover
Optional port flip down bench seats and cockpit table as part of optional Cockpit Comfort Pack

2



Full bench seat with motor cover

15



Transom access and removable back seat

8



Access walkway & access to foredeck

1



Livewell

2 fish lockers with standard drains



4

CAPTUR 605 PILOTHOUSE

10



2 seats with slide/swivel & flip-up bolsters

9 & 14



Foredeck anchor locker and stainless steel tilt bow roller with optional forward windlass
Bow area suitable for fishing

12



Double berth with storage below and berth cushions

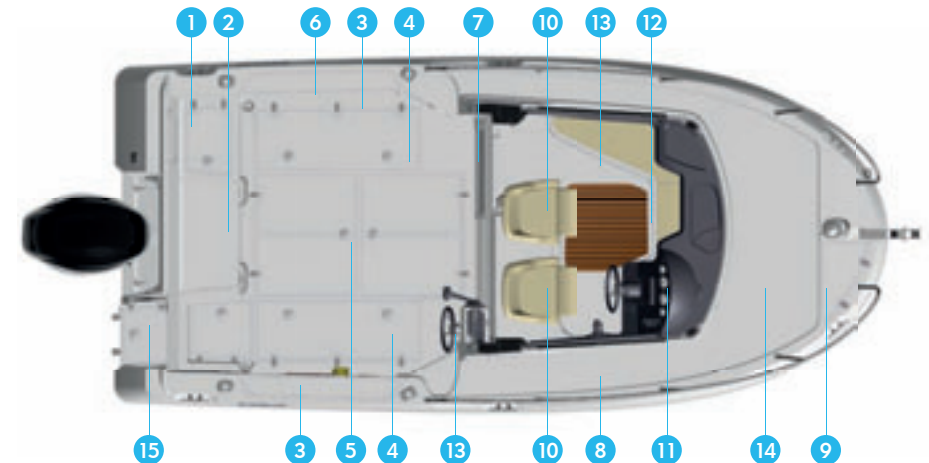
11



Integrated helm with hydraulic steering, mounting area for optional 7" GPS/ Depthsounder/ Stereo and 12v outlet

MODEL FEATURES

1. Livewell
2. Full bench seat with motor cover
3. 2 rod storage racks (3 rods per side)
4. 2 fish lockers with standard drains
5. Cockpit floor storage & battery access & cockpit service hatch
6. Optional port flip down bench seats and cockpit table as part of optional Cockpit Comfort Pack
7. Sliding cabin entry door
8. Access walkway & access to foredeck
9. Foredeck anchor locker and stainless steel tilt bow roller with optional forward windlass
10. Live 2 seats with slide/swivel & flip-up bolsters
11. Integrated helm with hydraulic steering, mounting area for optional 7" GPS/ Depthsounder/ Stereo and 12v outlet
12. Double berth with storage below and berth cushions
13. Optional cockpit helm and optional 7" second station electronics (GPS/ Chartplotter networked to primary system) with weather cover
14. Bow area suitable for fishing
15. Transom access and removable back seat



CAPTUR 555 PILOTHOUSE

WHERE FANTASTIC FISHING BEGINS

If you like to make the most of what life has to offer, here's a great introduction to life afloat. Covering all the essential features a keen weekend angler looks for, this compact fishing boat offers the kind of intelligent design and features that really make a difference to your experience aboard, making your time on the water effortlessly enjoyable. With a well-proportioned cockpit, there's plenty of space for fishing whilst a compact cabin offers protection from the elements all year round. Our Smart Edition and optional packs ensure you get just the boat you want and need.



Length Overall (M)	5,31
Beam Maximum (M)	2,40
Height - Without Canvas (M)	2,58
Dry Weight (Kg)	1170
Fuel Capacity (L)	90
CE Design Category	C
Maximum Number of People	5
Maximum Power (HP/kW)	115/85

CAPTUR 555 PILOTHOUSE

SAFETY

Safety comes as standard with all Quicksilver boats and you will appreciate this as soon as you step aboard. You'll notice the sense of stability a high freeboard brings and enjoy the ease of movement to the bow that the asymmetric layout allows. With 360 degree visibility from the helm plus real glass and windscreen wipers, you're ensured a clear view even when conditions get rough.

COMFORT

You'll enjoy the sense of space we've created here. With this model you'll find there's room to dine and relax. Interior seating is provided for 2 or 3 and you can add in a bench and cockpit table for further seating options. You'll notice how the thoughtfully-designed layout ensures ease of movement on board for adults and children alike, as well as enabling easy access to the bow area. With a cabin you've got year-round protection from the elements and with the comfort pack, 2 people can enjoy a peaceful night's sleep here too.

FISHING

This boat's larger-than-average cockpit area and substantial forward fishing platform provide plenty of room for the important business of fishing. There's space for up to 6 rods to be conveniently stored away when not in use, plus this boat comes with 2 standard rod holders on deck, with the option to add 2 more. Make the most of this boat's angling potential and add an optional moulded-in fish locker with thru-hull drain and pump out system or livewell with constant freshwater delivery system to keep bait and fish healthy.

STORAGE

Enjoyment of your space is key to your boating experience. All of your onboard needs are anticipated here, and you'll be thrilled with the abundance of fishing and general storage features throughout the cockpit and cabin. Lockable storage in cockpit is also provided for extra security and peace of mind.

SMART EDITION

Be sure to get what you need: the Smart Edition is based on the options that are most frequently requested by our customers. In addition to that you save an average of 15% when compared to ordering options separately and the SMART has short delivery times.



CAPTUR 555 PILOTHOUSE



8 Large fishing cockpit and floor storage, battery access and cockpit service hatch



13 Removable bench seat, ideal for fishing



5 Optional livewell system below bench seat



2 Pilot and co-pilot seating. 2 options for co-pilot seating: standard seat or optional bucket seat



3 Bench seat filler (part of Cabin Comfort Pack)



9 Double berth with berth upholstery, berth filler and cabin curtains (part of Cabin Comfort Pack)

Ergonomic helm with tachometer and speedometer plus 12v socket standard in the dash board. Optional Electronics Pack comes with GPS/Depthfinder/ Stereo



CAPTUR 555 PILOTHOUSE



7

Cockpit table (part of Cockpit Comfort Pack)



12

Access walkway & access to foredeck



15

Bow area suitable for fishing and with optional bow cushion

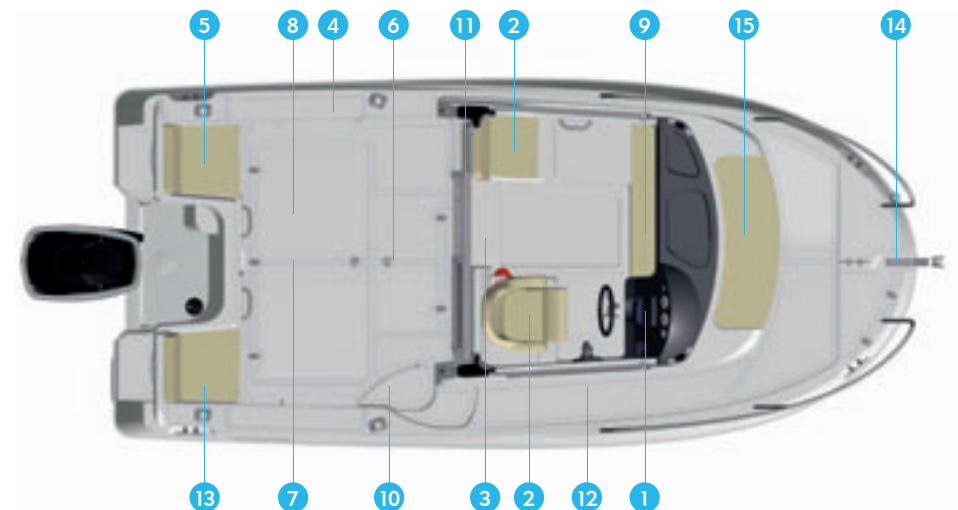


4

2 rod storage racks (3 rods per side), 2 additional rodholders with the Fish Pack

MODEL FEATURES

1. Ergonomic helm with tachometer and speedometer plus 12v socket standard in the dash board. Optional Electronics Pack comes with GPS/Depthfinder/Stereo
2. Pilot and co-pilot seating. 2 options for co-pilot seating: standard seat or optional bucket seat
3. Bench seat filler (part of Cabin Comfort Pack)
4. 2 rod storage racks (3 rods per side), 2 additional rodholders with the Fish Pack
5. Optional livewell system below bench seat
6. Fish locker with standard drains (part of Fish Pack)
7. Cockpit table (part of Cockpit Comfort Pack)
8. Large fishing cockpit and floor storage, battery access and cockpit service hatch
9. Double berth with berth upholstery, berth filler and cabin curtains (part of Cabin Comfort Pack)
10. Raw water wash-down (part of Fish Pack)
11. Sliding cabin entry door
12. Access walkway & access to foredeck
13. Removable bench seat, ideal for fishing
14. Foredeck anchor locker and stainless steel tilt bow roller
15. Bow area suitable for fishing and with optional bow cushion



SPECIFICATIONS & PACKS

MERCURY THE POWER TO ESCAPE



Choose among our vast range of robust and powerful Mercury outboard engines, the most appreciated of all time. You'll have the very best and most up-to-the-minute engine power to take your boat out to enjoy the delights of the water.

Moreover, you will benefit from a national and international network of dealers for service. Additionally, a five-year warranty programme is applicable for all eligible Mercury outboard engines*. The programme will be offered to owners of new Mercury outboard engines**. The warranty applies to Mercury Verado® and FourStroke engines purchased in Europe, the Middle East, Africa and the CIS region.

The five years of comprehensive factory-backed coverage includes labour for failures caused by defects in material or workmanship. What's more, the new warranty is transferable if the engine is sold within the five-year period. The warranty applies to recreational use only.

* Conditions and exclusions apply.

** Provided that all extended warranty conditions are met.

MODEL SPECIFICATIONS	905 PILOTHOUSE	755 PILOTHOUSE	675 PILOTHOUSE	605 PILOTHOUSE	555 PILOTHOUSE
Length Overall (M)	8,88	7,39	6,55	5,75	5,31
Length of Hull (M)	8,50	6,99	6,30	5,50	5,10
Beam Maximum (M)	2,99	2,79	2,54	2,54	2,40
Height - Without Canvas (M)	3,32	2,83	2,79	2,70	2,58
Dry Weight (Kg)	3100	1800	1585	1345	1170
Draft Hull with Max Engine (M)	0,59	0,50	0,53	0,46	0,40
Fuel Capacity (L)	400	300	200	160	90
CE Design Category	B	C	C	C	C
Maximum Number of People	10	8	7	6	5
Maximum Power (HP)	500	250	200	150	115
Maximum Power (kW)	368	184	147	110	85
Water Capacity – Optional (L)	100	82	32	0	0
OB Shaft Length	XL	XL	XL	XL	L

PACKS AND EDITIONS	905 PILOTHOUSE	755 PILOTHOUSE	675 PILOTHOUSE	605 PILOTHOUSE	555 PILOTHOUSE
SMART EDITION	x	x	x	x	x
Cabin Comfort Pack	x	x	x	x	x
Cockpit Comfort Pack	x	x	x	x	x
Fish Pack	x	x	x	x	x
FISH PACK		x	x	x	x
Interior Rod Racks	x				
Rodholders on Pilothouse	x	x			
Extra Rodholders	x	x	x	x	x
Raw Water Washdown	x	x	x	x	x
Livewell System	x	x	x	x	x
Fishing Station Refrigerator	x				
Fish Locker					x
Fish Locker Pumpout		x	x		x
Windshield Wash		x			

PACKS AND EDITIONS	905 PILOTHOUSE	755 PILOTHOUSE	675 PILOTHOUSE	605 PILOTHOUSE	555 PILOTHOUSE
COCKPIT COMFORT PACK	x	x	x	x	x
Port Flip Down Seat	x	x	x	x	
Starboard Flip Down Seat	x				
Aft Flip Down Seat		x	x		
Bow Cushion	x	x			x
Cockpit Table		x	x	x	x
Cockpit Shower		x			
Bench Seat Upholstery				x	x
Cockpit Flood Light					x
CABIN COMFORT PACK	x	x	x	x	x
Refrigerator	x	x	x		
Single Burner Stove	x		x		
Microwave	x				
Interior Curtains	x	x	x	x	x
Roof Hatch		x	x	x	x
Foredeck Opening Portlight		x			
Table/Dinette		x			
Berth Filler/Cushions			x	x	x
Pressure Fresh Water System			x		
Co-Pilot Bucket Seat					x
Jump Seat Filler					x
Starboard Windshield Wiper					x
COCKPIT CRUISING PACK	x				
Port Flip Down Seat	x				
Starboard Flip Down Seat	x				
Aft Sliding Bench Seat	x				
Cockpit Table	x				
Bow Cushion	x				
EXTERIOR LIGHTING PACK	x				
Spot Light on Hard Top	x				
Courtesy LED lights	x				
Hard Top Docking Lights	x				
ELECTRONICS PACK SINGLE HELM	x	x	x	x	x
Simrad GPS/Chart Plotter 9"	x	x			
Simrad GPS/Chart Plotter 7"			x	x	x
Stereo Fusion with 6 speakers	x	x	x	x	x
ELECTRONICS PACK DUAL HELM	x	x	x	x	
Simrad GPS/Chart Plotter 9"	x	x			
Simrad GPS/Chart Plotter 7"	x	x	2x	2x	
Stereo Fusion with 6 speakers	x	x	x	x	

HULL & DECK	905 PILOTHOUSE	755 PILOTHOUSE	675 PILOTHOUSE	605 PILOTHOUSE	555 PILOTHOUSE
Hull Color	o	o	o	o	o
Swim Ladder	v	v	v	v	v
Swim Platform	v	o	o	o	
Swim Platform Extension	o				
Bow Roller	v	v	v	v	v
Anchor Locker	v	v	v	v	v
Anti-Theft Security Eye	o	o	o	o	o
Starboard Windshield Wiper	v	v	v	v	Cabin/ED
Port Windshield Wiper	v	v			
Windshield Wash	v	Fish/ED			
Navigation Lights	v	v	v	v	v
Electric Bilge Pump	v	v	v	v	v
Rodholders on Pilothouse	Fish/ED	Fish/ED			
Hull Side Windows	v				
LED Courtesy Lights	Light				
COCKPIT	905 PILOTHOUSE	755 PILOTHOUSE	675 PILOTHOUSE	605 PILOTHOUSE	555 PILOTHOUSE
Fish Lockers	v	v	v	v	Fish/ED
Fish Locker Pumpout		Fish/ED	Fish/ED		
Cockpit Rod Storage	v	v	v	v	v
Rodholders	v	v	v	v	v
Extra Rodholders	Fish/ED	Fish/ED	Fish/ED	Fish/ED	Fish/ED
Raw Water Washdown	Fish/ED	Fish/ED	Fish/ED	Fish/ED	Fish/ED
Bait Preparation Station	v	v	v		
Livewell System	Fish/ED	Fish/ED	Fish/ED	Fish/ED	Fish/ED
Cockpit Shower	v ¹	Cockpit/ED			
Self Bailing Cockpit	v	v	v	v	v
Aft Flip Down Seat		Cockpit/ED	Cockpit/ED		
Port Flip Down Seat	Cockpit/Cruising/ED	Cockpit/ED	Cockpit/ED	Cockpit/ED	
Starboard Flip Down Seat	Cockpit/ Cruising/ED				
Aft Bench Seat /Cushions	Cruising			Cockpit/ED	Cockpit/ED
Cockpit Table	Cruising	Cockpit/ED	Cockpit/ED	Cockpit/ED	Cockpit/ED
Transom Door	v	v	v	v	
Cockpit Flood Light	v	v	v	v	Cockpit/ED
Second Helm Station	o	o	o	o	
Fishing Station	v				
Fishing Station Refrigerator	Fish/ED				
BOW	905 PILOTHOUSE	755 PILOTHOUSE	675 PILOTHOUSE	605 PILOTHOUSE	555 PILOTHOUSE
Bow Cushion	Cockpit/ Cruising/ED	Cockpit/ED	v	v	Cockpit/ED
HELM	905 PILOTHOUSE	755 PILOTHOUSE	675 PILOTHOUSE	605 PILOTHOUSE	555 PILOTHOUSE
Analog Speedometer/Tachometer					v
Smartcraft Speedometer/Tachometer	v	v	v	v	
Fuel Gauge					v
Hydraulic Steering	v	v	v	v	o
12v Electrical Socket	v	v	v	v	v
Stereo	Elec 1H/2H	Elec 1H/2H	Elec 1H/2H	Elec 1H/2H	Elec 1H/2H
GPS/Chart plotter 7"	Elec 2H	Elec 2H	Elec 1H/2H	Elec 1H/2H	Elec 1H
GPS/Chart plotter 9"	Elec 1H	Elec 1H			
VHF	o	o			
Vesselview	o				
GALLEY	905 PILOTHOUSE	755 PILOTHOUSE	675 PILOTHOUSE	605 PILOTHOUSE	555 PILOTHOUSE
Sink with Tap	v	v	v		
Pressure Fresh Water System	v	v	Cabin/ED		
Single Burner Stove	Cabin/ED	v	Cabin/ED		
Refrigerator	Cabin/ED	Cabin/ED	Cabin/ED		
Microwave	Cabin/ED				

CABIN	905 PILOTHOUSE	755 PILOTHOUSE	675 PILOTHOUSE	605 PILOTHOUSE	555 PILOTHOUSE
Berths	6	2	2	2 ⁶	2 ⁵
Berth Filler/Cushions	v	v	Cabin/ED	Cabin/ED	Cabin/ED
Opening Hull Portlights	v	v			
Foredeck Opening Portlight	v	Cabin/ED			
Cabin Lights	v	v	v	v	v
Interior Curtains	Cabin/ED	Cabin/ED	Cabin/ED	Cabin/ED	Cabin/ED
Interior Rod Racks	Fish/ED				
Pilot & Co-pilot Seat	v	v	v	v	v ²
Jump Seat Filler					Cabin/ED
Opening Side Window	v	v	v	v	v
Roof Hatch	o	o/Cabin/ED	o/Cabin/ED	o/Cabin/ED	o/Cabin/ED
Starboard Pilothouse Entry Door	v	v			
Table/Dinette	v	Cabin/ED			
Dinette Seat Configuration	v	v			
Fire Extinguisher	v	v	v	v	v
Sea Toilet	v ³	o	o		
HEAD	905 PILOTHOUSE	755 PILOTHOUSE	675 PILOTHOUSE	605 PILOTHOUSE	555 PILOTHOUSE
Sink with pressure fresh water system	v				
Shower	v				
Shower Curtain	Cabin/ED				
Enclosed Sea toilet	v				
Opening Portlight	v				
EQUIPMENT	905 PILOTHOUSE	755 PILOTHOUSE	675 PILOTHOUSE	605 PILOTHOUSE	555 PILOTHOUSE
Shore Power	o	o			
Dual Battery System	v	v	v		
OB Pre-Rigging	v	v	v	v	v
Diesel heat	o	o	o	o	
Bow Thruster	o	o			
Motor Bracket		o	o	o	o
Bow Electrical Windlass	o	o	o	o	
Transom Electric Windlass	o	o	o		
Electric Trim Tabs	o	o			
Grey water system	o				
Single Airconditioner on Shorepower	o				
Single Airconditioner on Shorepower & Gas or diesel generator	o				
Dual Airconditioner on Shorepower & Gas or diesel generator	o				
Water heater	o				
Spot Light	Light				
Hard Top Docking Lights	Light				
Simrad Radar	o	o			
Skyhook Digital Anchor with Vesselview	o ⁴				
COVER & CANVAS	905 PILOTHOUSE	755 PILOTHOUSE	675 PILOTHOUSE	605 PILOTHOUSE	555 PILOTHOUSE
Sun Awning	o	o	o	o	o
Bimini		o	o	o	o
Complete Enclosed Canvas	o	o	o	o	o
Exterior Helm Cover	o	o	o	o	

- 1 Cold water standard, hot/cold water optional
2 Standard seat with backrest or optional bucket seat with Cabin Comfort Pack
3 See Head

- 4 Available on 2x Verado 250
5 2 berths are part of Cabin Comfort Pack
6 Part of Cabin Comfort Pack

v = Standard o = Optional ED = Part of Smart Edition Cabin = Part of Cabin Comfort Pack
Cruising = Part of Cockpit Cruising Pack Cockpit = Part of Cockpit Comfort Pack Fish = Part of Fish Pack
Light = Part of Exterior Lighting Pack Elec 1H = Part of Electronic Pack - Offered on the Main Helm
Elec 2H = Part of Electronic Pack - Offered on the Second Helm

QUICKSILVER®

Explore our dealer network at
www.quicksilver-boats.com



The quality system of
Brunswick Marine in EMEA
is ISO 9001:2008 certified.

© 2016 Brunswick Marine in EMEA. All Rights Reserved.

Brunswick Marine in EMEA continuously explores means to improve the products it designs, manufactures and distributes. Every effort is made to produce sales and service literature which is current. Changes to specifications of engines, boats and accessories are ongoing. This brochure should not be regarded as a precise guide to the latest specifications. This brochure is also not an offer for sales of any particular engine, boat or accessory. Distributors and dealers are not agents of Brunswick Marine in EMEA or one of its affiliates and they have no authority to bind Brunswick Marine in EMEA by any express undertaking or representation, including but not limited to representations of product, sales, applications or service nature. Not all products are available in all countries and some are available only in limited quantities. Some products shown in this catalogue are equipped with optional accessories. Please see your local dealer.