







**MERCURY**

VERADO

VERADO

RMS

# welcome to the **world** **of Mercury**

Being the **#1 On The Water™** means leading the way in every aspect.

From products to service, to customer satisfaction, Mercury outperforms the competition at every turn.

Take Verado® for example. Only Mercury offers an exclusive engine concept that delivers the best two-stroke performance in a four-stroke package, with convenience-enhancing features that make every boat ride a unique experience.

If your passion is water sports then Mercury OptiMax® is your power of choice.

Mercury is also the leader in four-stroke technology with the most modern and the broadest range of four-stroke outboards in the industry.

This brochure is an invitation to discover the world of Mercury.

A world of pleasure, excitement and freedom.



## be **pure**

Like an eagle gliding through the air, Verado jets you through the water like no other engine will ever do. Its unique look exudes pure perfection and its stealth operation puts your boating perfectly in tune with the beautiful colours of the surrounding water.

## be **you**

Verado is also a winner that lets you fully enjoy your time on the water. Breathtaking top speed and acceleration for when you like going to extremes, or ultra smooth operation to enjoy relaxing moments.





## be **Verado**

Verado is much more than just an outboard motor, it's a way of life. Being Verado means standing out from the crowd and leading the way. You are a winner who takes risks and is always ahead of others. You like going to extremes and never accept second best. All these values can be found in Verado. On the water and on shore.



## the **most** advanced **power**

Before Verado, conventional four-stroke outboards were reliable, but disappointing on performance. Mercury changed that when it introduced the revolutionary four-stroke Verado. Verado is the ultimate four-stroke engine by combining supercharged performance with unmatched driving experience, precise control and reliability.

Mercury Verado also exceeds the requirements of the stringent European Recreational Craft Directive in terms of exhaust emission and noise levels. With Mercury Verado you keep the water blue and the air clean.



## VERADO

225 / 250 / 300

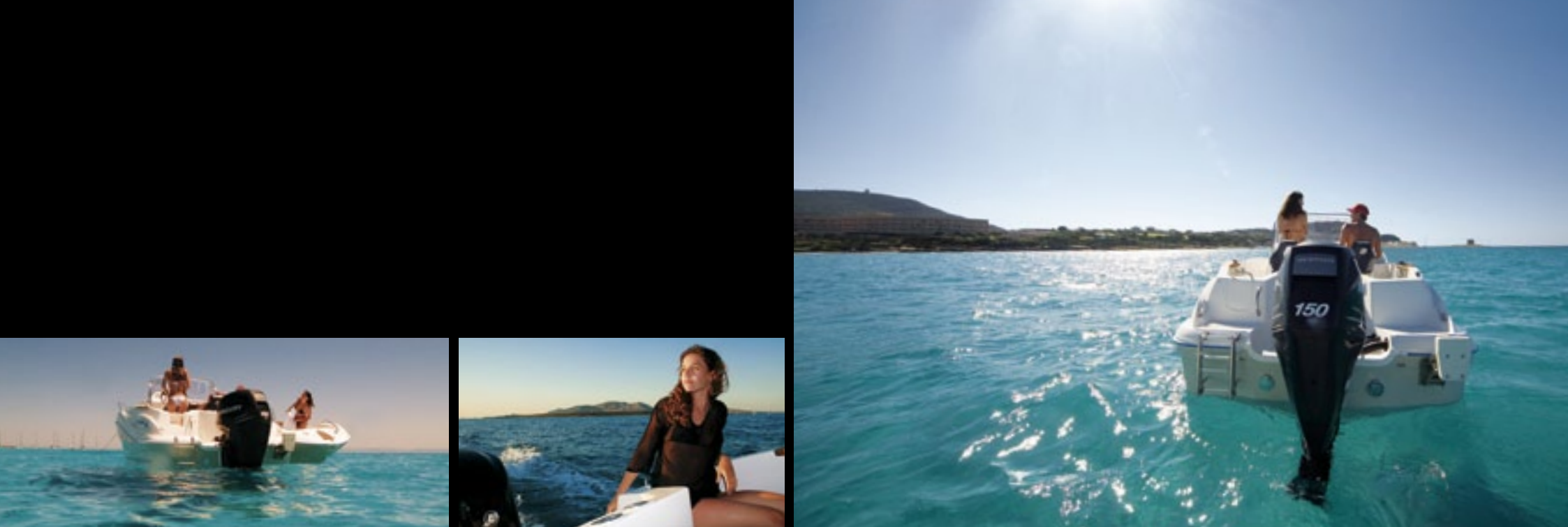


- Supercharger
- High-Performance Alternator
- Inline Design
- Intake Sound Attenuator
- Digital Throttle & Shift (DTS)
- SmartCraft® with Engine Guardian™
- Cradle-Mount Design
- Advanced MidSection (AMS)
- Electro-Hydraulic Power Steering
- 5-Year Warranty



Five-year limited non-declining, factory-backed.  
Conditions and exclusions apply.  
Not applicable for commercial  
and racing applications.





## power, beauty and **innovation**, all in a **compact** package

The idea behind Verado ? Make it the fastest, most fuel-efficient and highest innovative outboard in the world.

Much like the six-cylinder model, the four-cylinder Verado is futuristic when it comes to producing unbeatable power and a previously unimagined boating experience. Automotive-like responsiveness, remarkable acceleration and unbeatable torque combined with industry-

leading reliability and optional power steering to create a driving experience comparable to the performance of our six-cylinder Verado.

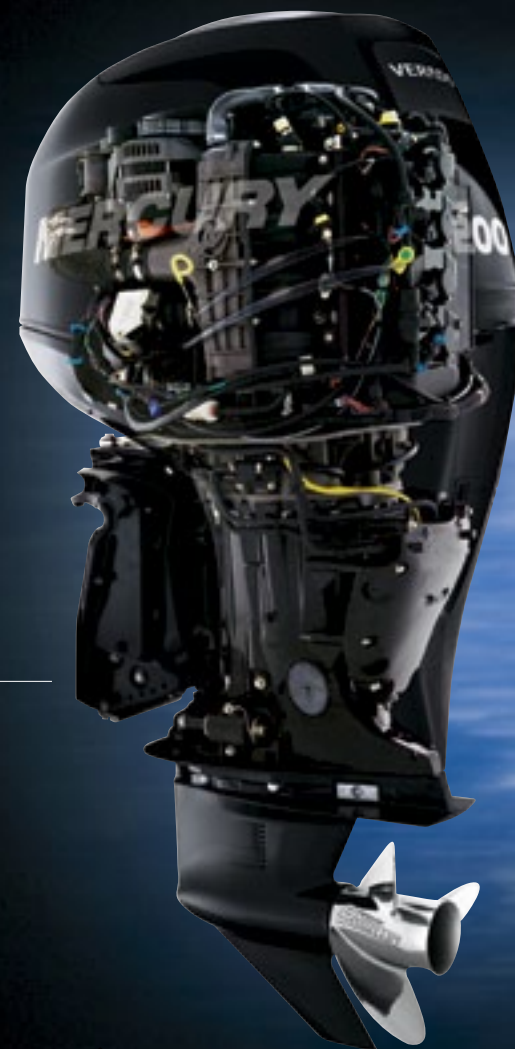
Our four-cylinder Verado is unlike any outboard you've ever experienced. Unmatched power, whisper-quiet and fingertip control over throttle and steering.





## VERADO

135 / 150 / 175 / 200



- Supercharger
- High-Performance Alternator
- Electronically controlled sequential multi-port fuel injection
- 2-stage Intake Resonator
- Digital Throttle & Shift (DTS)
- SmartCraft Compatible
- Heavy Duty Gearcase
- Patented Dual Water Inlets
- 5-Year Warranty



Five-year limited non-declining, factory-backed.  
Conditions and exclusions apply.  
Not applicable for commercial  
and racing applications.



## SmartCraft digital instruments & controls

SmartCraft Integrated Marine Technology can integrate all boat and engine functions into an easily managed system. SmartCraft maximizes performance and delivers a greater sense of security with innovative features like Engine Guardian, a proactive operator-warning system that alerts you to anything unusual.

Mercury's exclusive SmartCraft engine-management system automatically adjusts the engine for optimum performance in all conditions, and provides continuous information to the helm... all at the push of a button.

SmartCraft is available on all Mercury Verado, OptiMax plus selected four-stroke engines. The information can be displayed on dedicated digital gauges and SmartCraft compatible (NMEA 0183 data standard) GPS and Fishfinders.

SmartCraft's advanced technology monitors fuel flow...fuel consumption rates...estimated range...trim level...course heading...air, water and engine temperature...battery charging levels...speed and engine RPM...even maintenance and service advice. It all adds up to superior real-time information and control.



The SmartCraft range also offers innovative features like Troll Control™, which takes the throttle work out of fishing – even in large wells.

Engine Guardian monitoring uses over 40 sensors for advanced engine trouble-shooting, and is designed to protect an overstressed engine by automatically reducing engine power.

Mercury's unique **DTS** controls use the latest "fly-by-wire" technology to make shifting gears instantaneous and silky-smooth.

**DTS** provides lightning-fast throttle response, easier and more controllable docking manoeuvres, plus no more cable adjustments.

**DTS** eliminates the effort normally required for shifting and throttle adjustments associated with conventional long remote control cables.

**DTS** is standard on all Verado engines and is available on selected OptiMax models.







**optimum** efficiency,  
maximum **eco**-friendly

OptiMax delivers maximum performance with minimum emissions, even compared to many four-stroke engines in the same power class. OptiMax produce high intensity power and acceleration with low noise levels and clean-burning fuel efficiency.



## go for the **Max** with OptiMax

No Direct Fuel Injected engine has seen more use, testing or success than Mercury OptiMax.

It's not surprising that OptiMax repeatedly leads every DI category in power, fuel efficiency, reliability and versatility.

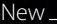
It all adds up to a complete line of power units that deliver more and deliver better.

OptiMax can save considerably on fuel expenses, even compared to many four-stroke engines in the same power class. Lighter than four-strokes in their class, the OptiMax models offer power-to-weight advantages on every boat and feature excellent acceleration and overall performance. Remarkably, OptiMax also trolls at lower speeds than many comparable four-strokes. That's versatility.





## OptiMax

75 / 90 / 115 / 125  
New   
135 / 150 / 175 / 200  
225 / 250

- **2 Stroke DFI**

Uses 45% less fuel compared to 2-stroke outboards, provides turn-key starting and smoke free operation.

- **Low-pressure Direct Fuel Injection (DFI)**

Less stress on components than competitive DFI outboards resulting in greater reliability and longer engine life.

- **60 A High-Performance Alternator**

More power to keep your batteries charged all the time.

- **Compact engine block**

Lightweight, best out-of-hole acceleration and top speed.

- **OptiMax Air compressor**

For maximum combustion efficiency, minimum fuel usage and low emissions.

- **SmartCraft Compatible**

Integrates all boat and engine functions to deliver more reliable information and a greater sense of security.

- **Mercury Designed Gearcase**

Improved boat handling and higher top speeds.

- **More Stainless Steel Components**

OptiMax is built with more stainless steel components than competitive engines for longer engine life and reduced maintenance.

- **Mercury Propellers**

Get the best performance out of your engine and optimize fuel economy<sup>1</sup>.

- **5-Year Warranty**

(1) The Mercury website features a Propeller Selector Program. Visit [www.mercurymarine.com](http://www.mercurymarine.com) and click on "propellers".



Five-year limited non-declining, factory-backed.  
Conditions and exclusions apply.  
Not applicable for commercial  
and racing applications.





# Mercury **Four-Stroke** easy to own, easy to operate

Mercury has long led the industry in clean, quiet, fuel-efficient outboard power, and now the gap is even wider. Mercury engineers combined innovative engineering with advanced reliability features to make Mercury four-stroke outboards run cleaner, quieter, and deliver smooth, responsive performance – all while cutting your fuel and maintenance bill.

Mercury four-strokes, offer the biggest range of four-stroke EFI power. No other brand comes anywhere near.





## **better** boating from best-in-class EFI **performance**

Everything from reliable, instant starts and clean, quiet operation to flawless performance under almost any condition makes the Mercury 115 – 100 – 80 EFI engines a perfect fit for your boat. Based on the Verado design platform, these engines deliver the reliable, responsive power you need, along with fuel-efficient performance. The Mercury 115 – 100 – 80 EFI are the latest generation of EFI power in this class.



***FourStroke***  
EFI Series  
80 / 100 / 115



- **Verado Design Platform**

Designed to withstand the toughest conditions.

- **Electronic Fuel Injection**

Ensures instant starts, great all-round performance and reliability.

- **50 A High-Performance Alternator**

The most powerful alternator in this power class.

- **Inline Design**

Superior torque and power.

- **Quiet by Design**

Exceptionally quiet across the whole RPM range, with best-in-class sound level at low RPM.

- **SmartCraft Compatible**

Integrates all boat and engine functions to deliver more reliable information and a greater sense of security.

- **Engine Guardian**

Protects your investment and boating experience by providing early indication if the engine is not operating as designed.

- **Freshwater Flushing Port**

A convenient feature that helps you preventing corrosion of inner engine parts.

- **Mercury Propellers**

Get the best performance out of your engine or optimize fuel economy<sup>1</sup>.

- **5-Year Warranty**



Five-year limited non-declining, factory-backed.  
Conditions and exclusions apply.  
Not applicable for commercial  
and racing applications.

(1) The Mercury website features a Propeller Selector Program. Visit [www.mercurymarine.com](http://www.mercurymarine.com) and click on "propellers".



## lifelong **reliability**

Delivering peace of mind is a leading priority with Mercury Mid-Range four-strokes. From the first time you turn the key to your hundredth fishing trip and beyond, you can count on them to perform. The advanced technology, durable components, smart features and unmatched fuel economy, combined with industry leading warranty coverage provide you the engine security you expect for many years to come.





## ***FourStroke*** EFI Series 40 / 50 / 60



- **New Engine Cowl**

Designed to make these engines the quietest in their class.

- **Electronic Fuel Injection (EFI)**

Ensures instant starts, great all-round performance, reliability and fuel economy.

- **Inline Design**

Superior torque and power.

- **SmartCraft Compatible and Troll Control**

Link your engine to the SmartCraft Troll Control Instruments. They allow you to set your RPM to a fixed trolling speed for fishing or driving relaxed through no-wake zones.

- **Engine Guardian**

Protects your investment and boating experience by providing early indication if the engine is not operating as designed.

- **BigFoot Models**

BigFoot models deliver more thrust, better performance for bigger and heavier boats, and are equipped with larger gears and shafts for use in tougher conditions.

- **Easy Shifting**

The F60 / 50 / 40s gear case is designed for easy and smooth gear shifting.

- **Mercury Propellers**

Get the best performance out of your engine and optimize fuel economy<sup>1</sup>.

- **5-Year Warranty**



Five-year limited non-declining, factory-backed.  
Conditions and exclusions apply.  
Not applicable for commercial  
and racing applications.

(1) The Mercury website features a Propeller Selector Program. Visit [www.mercurymarine.com](http://www.mercurymarine.com) and click on "propellers".



## the **first** manual **starting EFI** models

Mercury's history is a legend of innovation. Since 1939, when Carl Kiekhaefer, father of the Mercury outboards, built the first outboard with forged aluminum pistons, Mercury has been setting the standard in every aspect of marine design and innovation. Mercury is setting the standard again with the introduction of the first EFI outboards in the 25/30 hp category and even more, the first to offer a battery-free EFI system on both the 25 hp and 30 hp manual start models.



## **FourStroke** EFI Series 25 / 30



- **Tuned Cowl Induction**

Eliminates water intrusion and makes for the quietest engines in the class.

- **Electronic Fuel Injection (EFI)**

Ensures instant starts, great all-round performance, reliability and fuel economy.

- **Rope start on electronic models**

All electric start models come standard with a manual recoil starter for peace of mind.

- **Inline 3 cylinder**

Inline design and 3 cylinders for better performance.

- **15 Amp alternator**

Keep your battery charged to run your on-board electronics.

- **Multi Function Tiller Handle**

Take full control with one hand. With the tiller handle you control engine shifting, speed and you steer your boat. The throttle friction can be adjusted.

- **Dual water pick-ups**

Gets the best performance out of your engine and protects your engine against overheating, especially when navigating through shallow and weed-filled water.

- **Trough Prop Exhaust**

For quiet, smoke-free operation.

- **5-Year Warranty**



Five-year limited non-declining, factory-backed.  
Conditions and exclusions apply.  
Not applicable for commercial  
and racing applications.





## new **Four-Stroke** power to make the **family** complete

The new Mercury 15 hp four-stroke will certainly appeal to many enthusiasts of inflatable, rigid inflatable, small fiberglass and aluminum boats. Smooth quiet performance, low emissions and fuel consumption, and an attractive modern design are the standard features of these new engines.

The 8, 9.9, 15 and 20 hp four-stroke models are all loaded with features designed to make engine operation safe, easy and hassle free.

Small, portable power, great pleasure.



## ***FourStroke*** 8/9.9/15/20



- **Twin Cylinder**

Smooth running and more power.

- **Lightweight**

The lightest engines in their class for your convenience.

- **Rope start on electronic models**

All electric start models come standard with a manual recoil starter for peace of mind.

- **Fuel primer (8/9.9/15/20)**

The Mercury unique fuel primer ensures instant starts.

- **Low oil pressure visual warning system**

Protects your investment and gives 100% peace of mind.

- **Multi Function Tiller Handle (8/9.9/15/20)**

Take full control with one hand. With the tiller handle you control engine shifting, speed and you steer your boat. The throttle friction can be adjusted.

- **180° Tiller handle (8/9.9/15/20)**

The tiller handle tilts up for driving comfort and folds down for compact storage.

- **BigFoot models**

BigFoot models deliver more thrust, better performance for bigger and heavier boats, and are equipped with larger gears and shafts for use in tougher conditions.

- **5 trim positions and shallow water drive**

Use your engine everywhere, even in shallow waters.

- **Through Prop Exhaust**

For quiet, smoke-free operation.

- **5-Year Warranty**



Five-year limited non-declining, factory-backed.  
Conditions and exclusions apply.  
Not applicable for commercial  
and racing applications.



## grab it and go

Taking the fun with you is a great advantage of small boats and especially inflatable boats. Mercury offers a complete line of portable four-stroke outboards that are extremely light, with the widest range of models to choose from. The range provides easy portability with smart, simple-to-use features. Plus clean, quiet, fuel efficient four-stroke performance makes them the obvious power of choice.





## ***FourStroke*** 2.5/3.5/4/5/6

- **Large displacement powerhead**  
Superior performance and better fuel efficiency.
- **Decompression system (4/5/6)**  
The automatic cylinder decompression system ensures effortless starting.
- **Integrated fuel tank (2.5/3.5/4)**  
Integrated fuel tank with shut-off valve to maximize space in the boat.
- **CDI ignition**  
Maintenance-free ignition system that provides easy starting.
- **Visual warning system**  
Visual low oil pressure warning system for 100% peace of mind.

- **Twist-grip throttle**  
Take full control with one hand.
- **6 / 4 trim positions**  
6 trim positions (4/5/6), 4 on the 3.5/2.5, plus shallow water drive allow easy access to remote and in shallow waters.
- **Through Prop Exhaust**  
For quiet, smoke-free operation.
- **5-Year Warranty**



Five-year limited non-declining, factory-backed.  
Conditions and exclusions apply.  
Not applicable for commercial  
and racing applications.

# Mercury **Propellers**

Besides your engine, your propeller is the single most important factor that influences your boat's performance. The selection of the right propeller is vital to every aspect of handling, speed, acceleration, engine life, fuel economy and even safety. We offer more models than anyone else. In fact over 700, from standard to custom-built, high-performance and racing propellers. We have a proven reputation for highest-quality propellers, superior strength, durability and all-round performance. Mercury is the world's largest designer and manufacturer of propellers.

Go to [www.mercurymarine.com/prop\\_selector](http://www.mercurymarine.com/prop_selector) to choose the right prop for your boat and your boating application.



## **Enertia**

Our revolutionary new propeller made from our exclusive X7 alloy. It delivers the best acceleration and top speed by using thinner blades and higher rake angles. The ultimate design for high-horsepower boats. In 14" and 22" pitch.



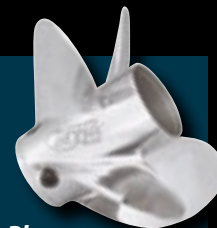
## **Vengeance**

A proven blade design in Stainless Steel in either rotation which pitches from 9" to 25". Better acceleration and handling than conventional 3-bladed aluminum props, and five times stronger.



## **Laser II**

If you like to run fast and light, this is the prop for you. Its thinner blades reduce drag and increase speed with the prop offered in both rotations with 19" and 27" pitch.



## **Trophy Plus**

Four-bladed Stainless Steel with 12" to 23 pitch, delivering unbelievable bow lift, improved handling and quick planing. The ideal prop for ski and wakeboard applications. For outboards 75 hp and up.



## **Trophy Sport**

Same characteristics as the Trophy Plus, but for outboards between 30 and 60 hp.



## **Tempest Plus**

Large diameter for high transoms and larger outboards. Increased acceleration and better handling. In 13" to 29" pitch.



## **Mirage Plus**

Designed for high horsepower and heavier engines. In 13" to 29" pitch.



## **Vensura**

For twin outboard applications. They perform beautifully in offshore and sports boat applications. In 17" to 23" pitch.



## **Revolution 4**

For better performance in big outboard sports boats. Dramatically improves mid-range acceleration and top speed. In 19" to 23" pitch.



## **Highfive**

An innovative 5-blade performer for smooth acceleration to pull skiers effortlessly. In 17" to 26" pitch.



# take **good care** of your engine

When you've made an investment in a beautifully engineered Mercury outboard, it makes sense to keep it that way and protect your warranty by only using genuine Quicksilver parts, accessories and maintenance products. Quicksilver is the most respected name in the outboard after-market, worldwide, because all of its products are specifically developed for the marine environment. Demand your dealer uses only Quicksilver products!

## **before** the boating season >> pre-season preparations

The pre-season time is the most exciting time of the year. Boats and engines are taken out of the garage and you start preparing your boat for the next summer. Quicksilver offers a complete range of products to prepare your engine and boat to be in perfect shape for a season full of boating excitement. Visit your dealer in spring to learn about our pre-season promotion campaigns.

## **during** the boating season

Who cares about visiting a marine dealer during summer time ?

To keep your engine in perfect shape and performing flawlessly, you need the best oil.

Quicksilver offers a complete range of top quality oils to help you get the best out of your engine.

You want to try something new ?

Visit your Mercury dealer and discover Quicksilver's wide range of water sports accessories.

## **after** the boating season >> winterizing

After a season full of boating fun, your engine needs a winter break. Autumn is the perfect time to prepare your boat and engine for winter storage. Quicksilver offers the broadest range of winterizing products to keep your boat and engine in perfect shape during winter time. Visit your dealer and go to [www.quicksilverwinterization.com](http://www.quicksilverwinterization.com) to learn about our winterizing promotion campaigns.



# specifications


Models <sup>(1)</sup>		Kilowatts <sup>(2)</sup>	Max. RPM at Full Throttle	Cylinders	Displacement	Starting	Gear Ratio	Gear Shift	Steering
MERCURY VERADO									
300-225	Verado 300 • Verado 250 • Verado 225	 221 • 184 • 165 kW	5800-6400	6 (in-line)	2598 cc	Electric (turn-key)	300: 1.75:1 250 • 225: 1.85:1	Forward (F) - Neutral (N) - Reverse (R)	Electro-hydraulic Power steering with integral hydraulic cylinder
200-135	Verado 200 • Verado 175 • Verado 150 • Verado 135	 147 • 129 • 110 • 99.3 kW	200 • 175 • 150: 5800-6400 135: 5200-6400	4 (in-line)	1732 cc	Electric (turn-key)	2.08:1	Forward (F) - Neutral (N) - Reverse (R)	Remote
MERCURY FOURSTROKE									
115-80	115 EFI • 100 EFI • 80 EFI	 84.6 • 73.6 • 58.8 kW	115: 5800-6400 100 • 80: 5000-6000	4 (in-line)	1732 cc	Electric (turn-key)	2.33:1	Forward (F) - Neutral (N) - Reverse (R)	Remote
60-40	60 EFI • BIGFOOT • 50 EFI	 44.1 • 36.8 kW	5500-6000	4 (in-line)	995 cc	Electric (turn-key)	1.83:1 BIGFOOT: 2.33:1	Forward (F) - Neutral (N) - Reverse (R)	Remote
	40 EFI	 29.4 kW	5500-6000	3 (in-line)	747 cc	Electric (turn-key)	2.00:1	Forward (F) - Neutral (N) - Reverse (R)	Remote
30-25	30 EFI • 25 EFI	22.1 • 18.4 kW	30: 5250-6250 25: 5000-6000	3 (in-line)	526 cc	Manual or Electric (turn-key)	1.92:1	Forward (F) - Neutral (N) - Reverse (R)	Tiller or Remote
20-15	20 • 15	14.7 • 11.0 kW	20: 5250-6250 15: 5000-6000	2 (in-line)	351 cc	Manual or Electric	2.15:1	Forward (F) - Neutral (N) - Reverse (R)	Tiller or Remote
9.9 - 8	9.9 • BIGFOOT • 8	7.28 • 5.88 kW	5000-6000	2 (in-line)	209 cc	Manual or Electric	2.08:1 BIGFOOT: 2.42:1	Forward (F) - Neutral (N) - Reverse (R)	9.9: Tiller or Remote 8: Tiller
6-2.5	6 • 5 • 4 • SAILPOWER	4.41 • 3.68 • 2.94 kW	6: 5000-6000 5 • 4: 4500-5500	1	123 cc	Manual	2.15:1	Forward (F) - Neutral (N) - Reverse (R)	Tiller
	3.5 • 2.5	2.57 • 1.84 kW	5000-6000	1	85 cc	Manual	2.15:1	Forward (F) - Neutral (N)	Tiller
MERCURY OPTIMAX									
250-135	250 • 225 • 200 OptiMax	 184 • 165 • 147 kW	250: 5500-6000 225 • 200: 5000-5750	V-6 (60° Vee)	3032 cc	Electric (turn-key)	1.75:1	Forward (F) - Neutral (N) - Reverse (R)	Remote
	175 • 150 • 135 OptiMax	 129 • 110 • 99.3 kW	175 • 150: 5250-5750 135: 5000-5600	V-6 (60° Vee)	2507 cc	Electric (turn-key)	175 • 150: 1.87:1 135: 2.00:1	Forward (F) - Neutral (N) - Reverse (R)	Remote
125-75	125 • 115 • 90 • 75 OptiMax	 91.9 • 84.6 • 66.2 • 55.2 kW	5000-5750	3 (in-line)	1526 cc	Electric (turn-key)	125 • 115: 2.07:1 90 • 75: 2.33:1	Forward (F) - Neutral (N) - Reverse (R)	Remote

For more information on the propeller that is right for you, please see your dealer.

Alternator System <sup>(3)</sup>	Trim Positions	Fuel Tank	Fuel Requirements	Weight <sup>(4)</sup>	Recommended Boat Transom Height	Induction System	Counter Rotation
Fully regulated Belt-Driven 70 amp (882 watt)	SmartCraft-programmable Power trim and tilt	Optional	Verado 300: Unleaded 98 RON recommended for maximum performance Verado 250 • 225: Unleaded 90 RON min.	288 kg	508 mm (L) - 635 mm (XL) - 762 mm (XXL)	SmartCraft DTS (Digital Throttle & Shift), supercharged with charge air cooling and electronic boost pressure control	Available on XL and XXL models
Fully regulated Belt-Driven 70 amp (882 watt)	Power trim and tilt with SmartCraft-programmable tilt	Optional	Unleaded 90 RON min.	231 kg	508 mm (L) - 635 mm (XL)	SmartCraft DTS (Digital Throttle & Shift), supercharged with charge air cooling and electronic boost pressure control	Available on XL models
Fully regulated Belt-Driven 50 amp (630 watt)	Power trim standard	Optional	Unleaded 90 RON min.	181 kg	115 • 100: 508 mm (L) - 635 mm (XL) 80: 508 mm (L)	4-valve dual overhead cam design	N/A
18 amp (223 watt)	Power trim standard	Standard 25 L	Unleaded 90 RON min.	112 kg BIGFOOT: 120 kg	508 mm (L)	2-valve single overhead cam design	N/A
18 amp (223 watt)	Gas assist and Power trim models available	Standard 25 L	Unleaded 90 RON min.	98 kg	381 mm (S) 508 mm (L)	2-valve single overhead cam design	N/A
15 amp (186 watt)	30: Gas assist or Power trim 25: Manual or Power trim	Standard 25 L	Unleaded 90 RON min.	30: 78 kg 25: 71 kg	381 mm (S) 508 mm (L)	2-valve single overhead cam design	N/A
11 amp (139 watt)	5 & shallow water drive	Standard 12 L	Unleaded 90 RON min.	52 kg	381 mm (S) 508 mm (L)	2-valve single overhead cam design	N/A
6 amp (76 watt) on electric-start models	5 & shallow water drive	Standard 12 L	Unleaded 90 RON min.	38 kg BIGFOOT: 44 kg	381 mm (S) - 508 mm (L) BIGFOOT: 508 mm (L) 635 mm (XL)	2-valve single overhead cam design	N/A
Optional 4 amp (50 watt) lighting, 2 amp (25 watt) charging 4 SAILPOWER: Standard with rectifier	6 & shallow water drive	6 • 5: Standard 12 L 4 + 4 SAILPOWER: Integrated fuel tank 1.1 litre	Unleaded 90 RON min.	25 kg	381 mm (S) 508 mm (L) 4 SAILPOWER: 508 mm (L)	2-valve pushrod	N/A
N/A	4	Integrated fuel tank 0.95 litre	Unleaded 90 RON min.	18 kg	3.5: 381 mm (S) 508 mm (L) 2.5: 381 mm (S)	2-valve pushrod	N/A
Belt-Driven 60 amp (756 watt)	Power trim standard	Optional	Unleaded 90 RON min.	250: 229 kg 225 • 200: 225 kg	508 mm (L) - 635 mm (XL) 762 mm (XXL)	2-stage direct fuel injection	Available on XL and XXL models
Belt-Driven 60 amp (756 watt)	Power trim standard	Optional	Unleaded 90 RON min.	195 kg	508 mm (L) - 635 mm (XL)	2-stage direct fuel injection	Available on XL models
Belt-Driven 60 amp (756 watt)	Power trim standard	Optional	Unleaded 90 RON min.	170 kg	125 • 115: 508 mm (L) - 635 mm (XL) 90 • 75: 508 mm (L)	2-stage direct fuel injection	N/A

(1) Model offering may vary from one country to another. Please see your local dealer for specific information. (2) Measured at propshaft in accordance with ICOMIA 28.

(3) Requires rectifier to complete installation manual versions. Standard on 4 Sailpower model. (4) Dry weight specification is for lightest model and excludes engine oil, rigging hardware and propeller.

 SmartCraft Integrated Marine technology standard.



# knowledge is power

Find detailed engine specifications, features, boater's testimonials and informative engine tests at [www.mercurymarine.com](http://www.mercurymarine.com) – the ultimate source for Mercury outboards.



**MERCURY.**  
"1 On The Water"

 **BRUNSWICK**  
GENUINE INGENUITY

© 2009 Brunswick Marine in EMEA. All Rights Reserved.  
Brunswick Marine in EMEA continuously explores means to improve the products it designs, manufactures and distributes. Every effort is made to produce sales and service literature which is current. Changes to specifications of engines, boats and accessories are ongoing. This brochure should not be regarded as a precise guide to the latest specifications. This brochure is also not an offer for sales of any particular engine, boat or accessory. Distributors and dealers are not agents of Brunswick Marine in EMEA or one of its affiliates and they have no authority to bind Brunswick Marine in EMEA by any express undertaking or representation, including but not limited to representations of product, sales, applications or service nature. Not all products are available in all countries and some are available only in limited quantities. Some products shown in this catalogue are equipped with optional accessories. Please see your local dealer.  
Visit <http://www.BrunswickMarineEMEA.com>



The quality system of  
Brunswick Marine in EMEA  
is ISO 9001:2000 certified

GB - Printed in Belgium. Part #: 90-8M9200703