

REVISIONS			
REV	DESCRIPTION	BY	DATE
1	Initial Release	CLS	9-Sept-13

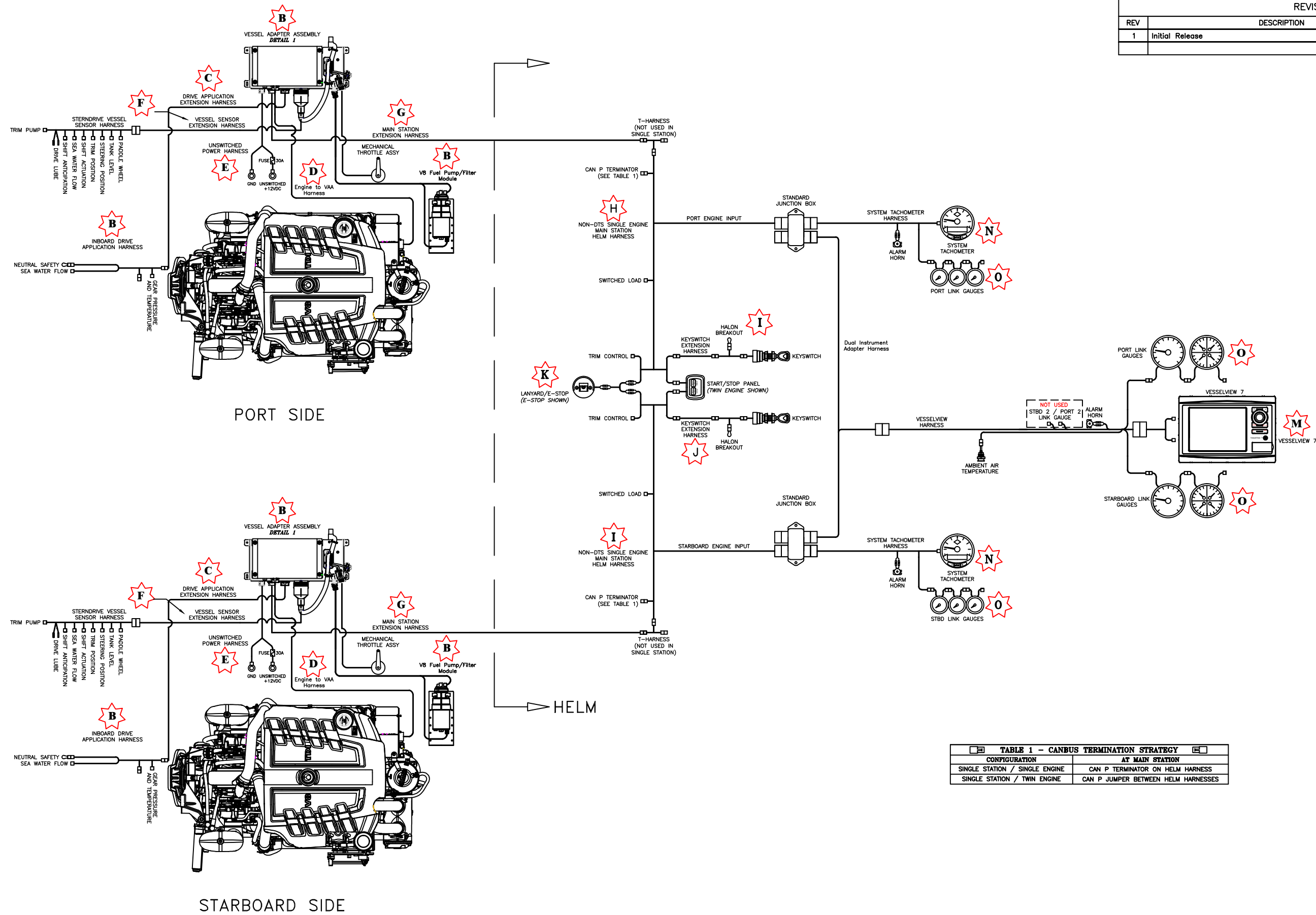
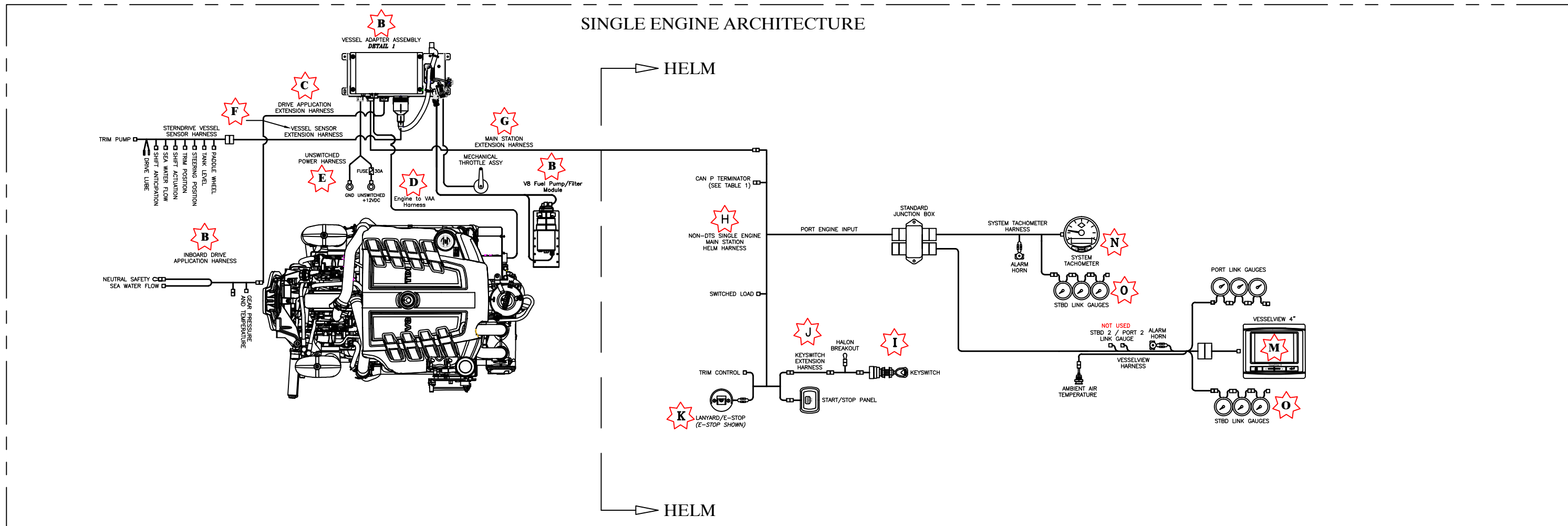


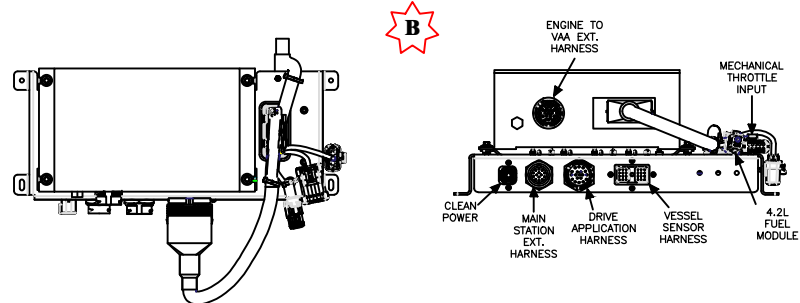
TABLE 1 - CANBUS TERMINATION STRATEGY	
CONFIGURATION	AT MAIN STATION
SINGLE STATION / SINGLE ENGINE	CAN P TERMINATOR ON HELM HARNESS
SINGLE STATION / TWIN ENGINE	CAN P JUMPER BETWEEN HELM HARNESSES

REVISIONS			
REV	DESCRIPTION	BY	DATE
1	Initial Release	CLS	9-Sept-13

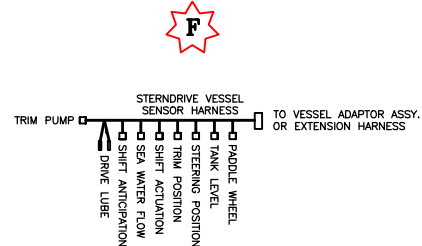
SINGLE ENGINE ARCHITECTURE



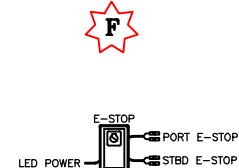
VESSEL ADAPTER ASSEMBLY
DETAIL 1



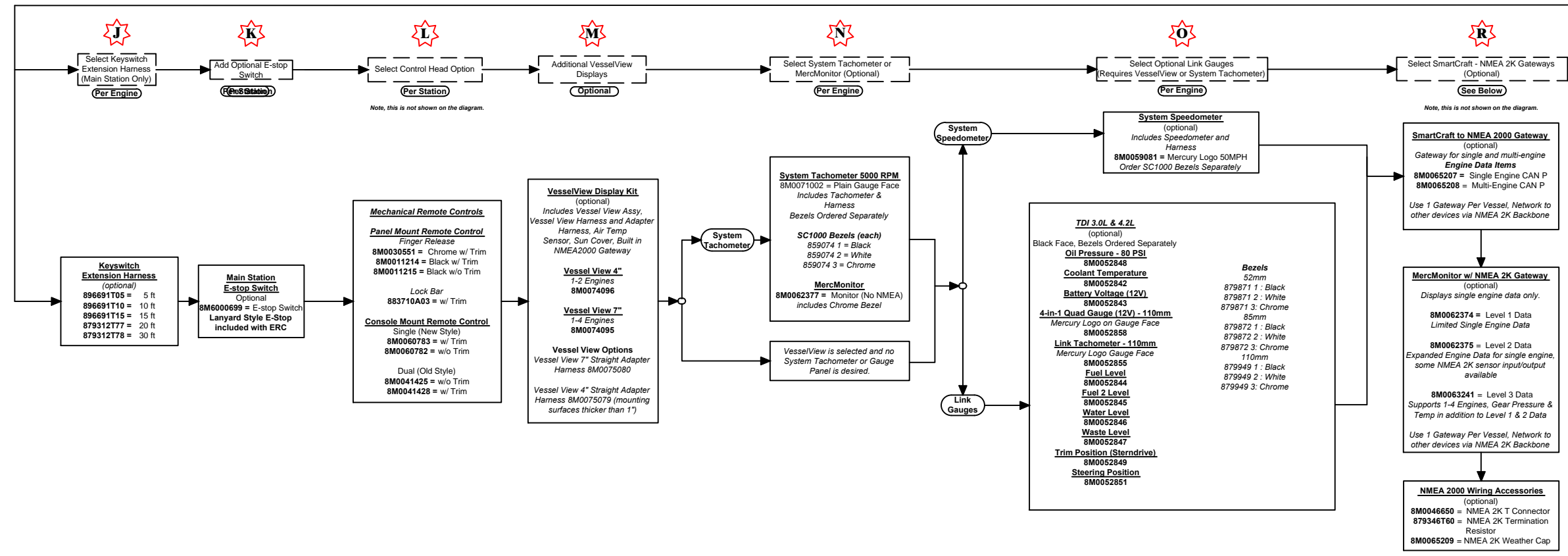
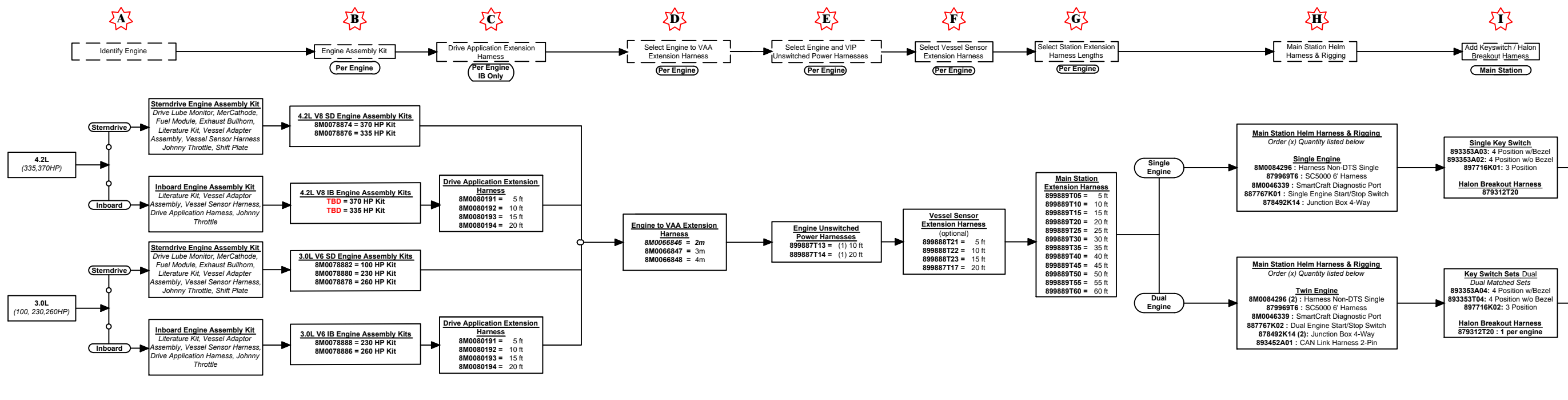
VESSEL SENSOR HARNESS
DETAIL 2



E-Stop Switch
DETAIL 3

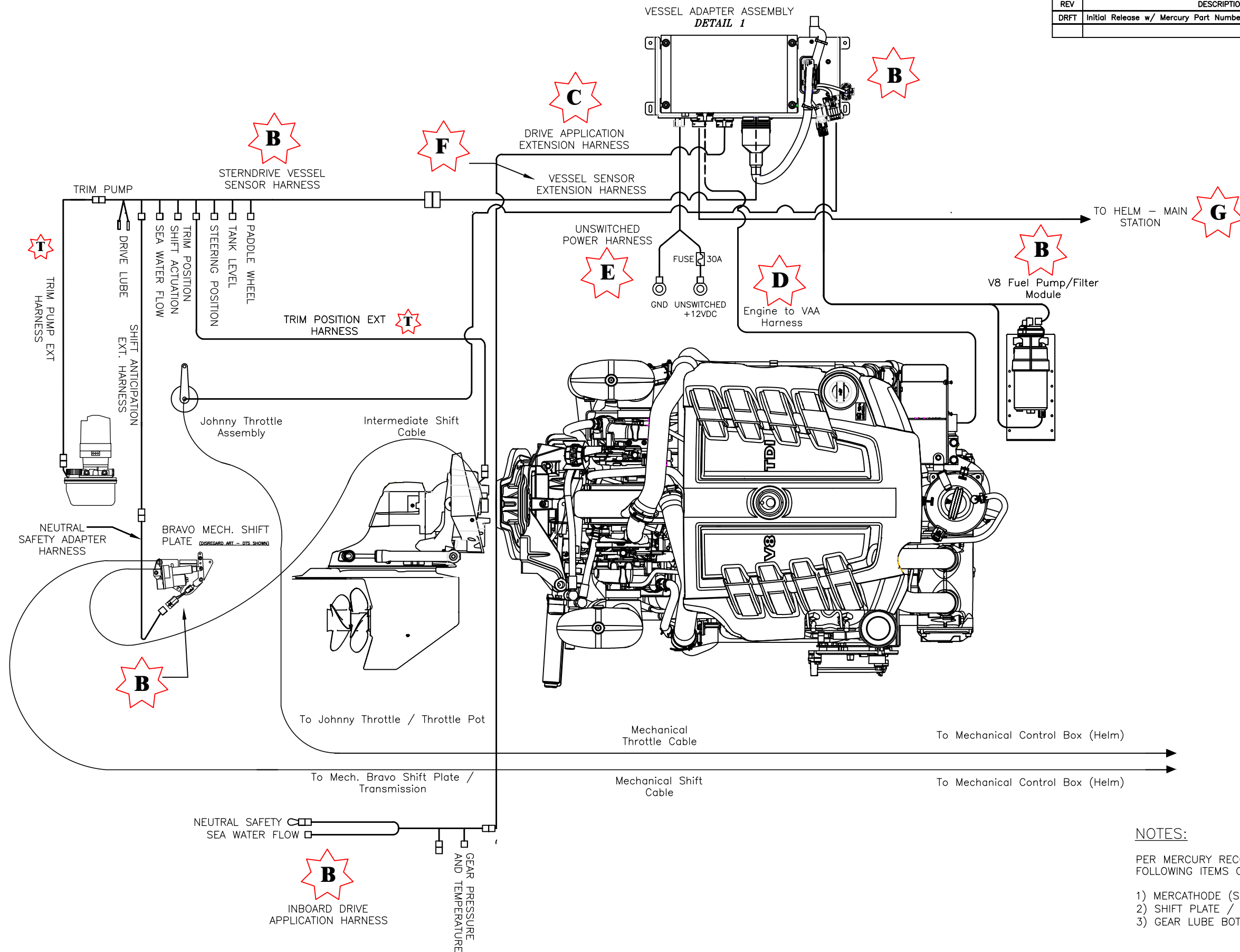


REVISIONS			
REV	DESCRIPTION	BY	DATE
1	Initial Release	CLS	9-Sept-13



TDI 3.0L & 4.2L Non-DTS System Architecture & Option Overview Diagram

REVISIONS			
REV	DESCRIPTION	BY	DATE
DRFT	Initial Release w/ Mercury Part Numbers and NMEA2000 Gateway	CRC	18-MAR-13



NOTES:
 PER MERCURY RECOMMENDATION, MOUNT THE FOLLOWING ITEMS ON THE TRANSOM OF THE VESSEL

- 1) MERCATHODE (SD ONLY)
- 2) SHIFT PLATE / ACTUATOR
- 3) GEAR LUBE BOTTLE (SD ONLY)

TDI 3.0L & 4.2L Non-DTS System
 Architecture & Option Overview Diagram