



ME
FO

MERCURY
FOURSTROKE

MERCURY.
'1 On The Water'



welcome to the **world** **of Mercury**

Being the **#1 On The Water™** means leading the way in every aspect.

From products to service, to customer satisfaction, Mercury outperforms the competition at every turn.

Take Verado® for example. Only Mercury offers an exclusive engine concept that delivers the best performance with convenience-enhancing features that make every boat ride a unique experience.

Mercury is the leader in outboard technology with the most modern and the broadest range of four-stroke engine in the industry.

This brochure is an invitation to discover the world of Mercury.

A world of pleasure, excitement and freedom.



be **pure**

Like an eagle gliding through the air, Verado jets you through the water like no other engine will ever do. Its unique look exudes pure perfection and its stealth operation puts your boating perfectly in tune with the beautiful colours of the surrounding water.

be **you**

Verado is also a winner that lets you fully enjoy your time on the water. Breathtaking top speed and acceleration for when you like going to extremes, or ultra smooth operation to enjoy relaxing moments.



be **Verado**

Verado is much more than just an outboard motor, it's a way of life. Being Verado means standing out from the crowd and leading the way. You are a winner who takes risks and is always ahead of others. You like going to extremes and never accept second best. All these values can be found in Verado. On the water and on shore.



refinement with roar

The Verado 350 SCi combines the brains of Verado with the brawn of Mercury Racing. This in-line six-cylinder engine continues Mercury Racing's heritage of delivering more power and performance than competitive outboards with the same horsepower rating.

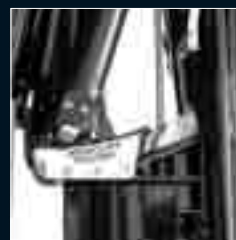
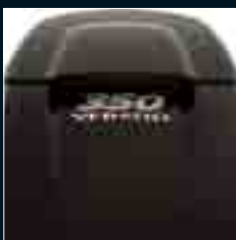
The Verado 350 SCi delivers the strength, toughness and durability recreational boaters and offshore sport anglers demand.

From the top cowl to the all-new gearcase, this engine is designed to exceed consumer expectations in product quality, reliability and performance.

Just turn the key and release. The engine will automatically start itself. Electro-hydraulic power steering and SmartCraft Digital Throttle & Shift provide for an exceptionally smooth and responsive driving experience combined with sports car-like handling and performance.



VERADO 350



- Cool air intake for powerhead/ components
- Cool air intake for supercharger
- Mercury Racing graphics
- Send cast advanced midsection
- Stainless Steel Guide Plates
- High-Performance Engine Mounts
- Power Steering and DTS
- Race derived internal powerhead components
- High output alternator
- Smartcraft with engine guardian



the **most** advanced **power**

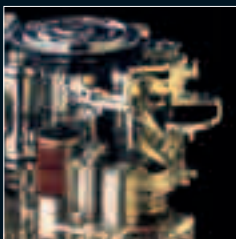
Before Verado, conventional four-stroke outboards were reliable, but disappointing on performance. Mercury changed that when it introduced the revolutionary four-stroke Verado. Verado is the ultimate four-stroke engine by combining supercharged performance with unmatched driving experience, precise control and reliability.

Mercury Verado also exceeds the requirements of the stringent European Recreational Craft Directive in terms of exhaust emission and noise levels. With Mercury Verado you keep the water blue and the air clean.



VERADO

225 / 250 / 300



- Supercharger
- High-Performance Alternator
- Inline Design
- Intake Sound Attenuator
- Digital Throttle & Shift (DTS)
- SmartCraft® with Engine Guardian™
- Cradle-Mount Design
- Advanced MidSection (AMS)
- Electro-Hydraulic Power Steering
- 5-Year Warranty



Five-year limited non-declining, factory-backed.
Conditions and exclusions apply.
Not applicable for commercial
and racing applications.



power, beauty and **innovation**, all in a **compact** package

The idea behind Verado ? Make it the fastest, most fuel-efficient and highest innovative outboard in the world.

Much like the six-cylinder model, the four-cylinder Verado is futuristic when it comes to producing unbeatable power and a previously unimagined boating experience. Automotive-like responsiveness, remarkable acceleration and unbeatable torque combined with industry-

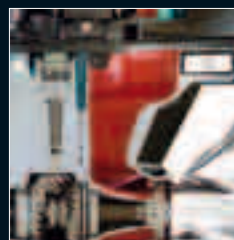
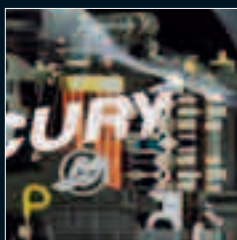
leading reliability and standard digital throttle and shift to create a driving experience comparable to the performance of our six-cylinder Verado.

Our four-cylinder Verado is unlike any outboard you've ever experienced. Unmatched power, whisper-quiet and fingertip control over throttle and steering.



VERADO

150 / 175 / 200



- Supercharger
- High-Performance Alternator
- Electronically controlled sequential multi-port fuel injection
- 2-stage Intake Resonator
- Digital Throttle & Shift (DTS)
- SmartCraft Compatible
- Heavy Duty Gearcase
- Patented Dual Water Inlets
- 5-Year Warranty



Five-year limited non-declining, factory-backed.
Conditions and exclusions apply.
Not applicable for commercial
and racing applications.





SmartCraft digital instruments & controls

SmartCraft Integrated Marine Technology can integrate all boat and engine functions into an easily managed system. SmartCraft maximizes performance and delivers a greater sense of security with innovative features like Engine Guardian, a proactive operator-warning system that alerts you to anything unusual.

Mercury's exclusive SmartCraft engine-management system automatically adjusts the engine for optimum performance in all conditions, and provides continuous information to the helm... all at the push of a button.

SmartCraft is available on all Mercury Verado, OptiMax plus selected four-stroke engines. The information can be displayed on dedicated digital gauges and SmartCraft compatible (NMEA 0183 data standard) GPS and Fishfinders.

SmartCraft's advanced technology monitors fuel flow...fuel consumption rates...estimated range... trim level...course heading...air, water and engine temperature...battery charging levels...speed and engine RPM...even maintenance and service advice. It all adds up to superior real-time information and control.



The SmartCraft range also offers innovative features like Troll Control™, which takes the throttle work out of fishing – even in large wells.

Engine Guardian monitoring uses over 40 sensors for advanced engine trouble-shooting, and is designed to protect an overstressed engine by automatically reducing engine power.

Mercury's unique **DTS** controls use the latest "fly-by-wire" technology to make shifting gears instantaneous and silky-smooth.

DTS provides lightning-fast throttle response, easier and more controllable docking manoeuvres, plus no more cable adjustments.

DTS eliminates the effort normally required for shifting and throttle adjustments associated with conventional long remote control cables.

DTS is standard on all Verado engines and is available on selected OptiMax models.





optimum efficiency,
maximum **eco**-friendly

OptiMax delivers maximum performance with minimum emissions, even compared to many four-stroke engines in the same power class. OptiMax produce high intensity power and acceleration with low noise levels and clean-burning fuel efficiency.



go for the **Max** with OptiMax

No Direct Fuel Injected engine has seen more use, testing or success than Mercury OptiMax.

It's not surprising that OptiMax repeatedly leads every DFI category in power, fuel efficiency, reliability and versatility.

It all adds up to a complete line of power units that deliver more and deliver better.

OptiMax can save considerably on fuel expenses, even compared to many four-stroke engines in the same power class. Lighter than four-strokes in their class, the OptiMax models offer power-to-weight advantages on every boat and feature excellent acceleration and overall performance. Remarkably, OptiMax also trolls at lower speeds than many comparable four-strokes. That's versatility.



OptiMax
75/90/115/125
150 Pro XS/200/225/250

- **Low-pressure Direct Fuel Injection (DFI)**
Less stress on components than competitive DFI outboards resulting in greater reliability and longer engine life.
- **2 Stroke DFI**
Uses 45% less fuel compared to common four stroke outboards, provides turn-key starting and smoke free operation.
- **60 A High-Performance Alternator**
More power to keep your batteries charged all the time.
- **Compact engine block**
Lightweight, best out-of-hole acceleration and top speed.
- **OptiMax Air compressor**
For maximum combustion efficiency, minimum fuel usage and low emissions.

- **SmartCraft Compatible**
Integrates all boat and engine functions to deliver more reliable information and a greater sense of security.
- **More Stainless Steel Components**
OptiMax is built with more stainless steel components than competitive engines for longer engine life and reduced maintenance.
- **Mercury Propellers**
Get the best performance out of your engine and optimize fuel economy¹.
- **5-Year Warranty**

(1) The Mercury website features a Propeller Selector Program. Visit www.mercurymarine.com and click on "propellers".



Five-year limited non-declining, factory-backed.
Conditions and exclusions apply.
Not applicable for commercial
and racing applications.



Mercury **Four-Stroke** easy to own, easy to operate

Mercury has long led the industry in clean, quiet, fuel-efficient outboard power, and now the gap is even wider. Mercury engineers combined innovative engineering with advanced reliability features to make Mercury four-stroke outboards run cleaner, quieter, and deliver smooth, responsive performance – all while cutting your fuel and maintenance bill.

Mercury four-strokes, offer the biggest range of four-stroke EFI power. No other brand comes anywhere near.



highest **displacement** in the **150 HP** class!

Big displacement, combined with the lightest weight and smallest package size means strong, long-lasting performance on light and heavy hulls alike.

The 150 maximizes your time on the water by making basic maintenance easy to do and quick to perform by you.



FourStroke
EFI Series
New 150

• **Highest Durability**

Largest displacement, lowest stress
Massive torque for powerful acceleration
Large gearcase for low stress and improved lift

• **Lightest Weight & Smallest Package Size**

Almost 10kg lighter than nearest 4-Stroke competitor
The most compact and lowest profile 150 4-Stroke

• **Easiest to Maintain**

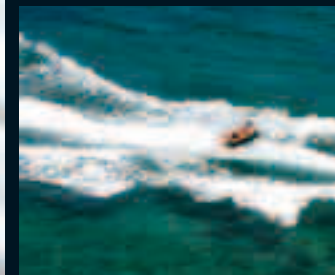
Easy-change fuel filter and easy-drain oil system
Exclusive maintenance-free for life valve train and timing chain

• **Confidence and Peace of Mind**

Tested, proven and backed by world's largest marine dealer network



Five-year limited non-declining, factory-backed.
Conditions and exclusions apply.
Not applicable for commercial
and racing applications.



better boating from best-in-class EFI **performance**

Everything from reliable, instant starts and clean, quiet operation to flawless performance under almost any condition makes the Mercury EFI engines a perfect fit for your boat. These engines deliver the reliable, responsive power you need, along with fuel-efficient performance. The Mercury 115 – 100 – 80 EFI are the latest generation of EFI power in this class.



FourStroke
EFI Series
80 / 100 / 115



- **Electronic Fuel Injection**

Ensures instant starts, great all-round performance and reliability.

- **60 A High-Performance Alternator**

The most powerful alternator in this power class.

- **Inline Design**

Superior torque and power.

- **Quiet by Design**

Exceptionally quiet across the whole RPM range, with best-in-class sound level at low RPM.

- **SmartCraft Compatible**

Integrates all boat and engine functions to deliver more reliable information and a greater sense of security.

- **Engine Guardian**

Protects your investment and boating experience by providing early indication if the engine is not operating as designed.

- **Freshwater Flushing Port**

A convenient feature that helps you preventing corrosion of inner engine parts.

- **Mercury Propellers**

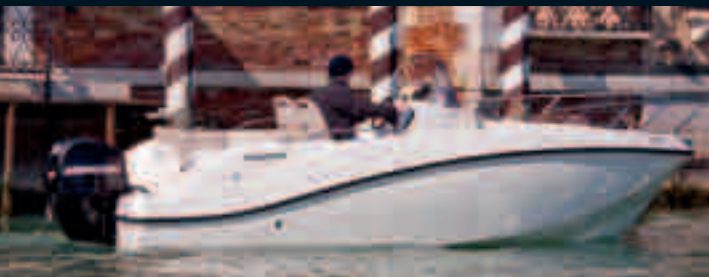
Get the best performance out of your engine or optimize fuel economy¹.

- **5-Year Warranty**



Five-year limited non-declining, factory-backed.
Conditions and exclusions apply.
Not applicable for commercial
and racing applications.

(1) The Mercury website features a Propeller Selector Program. Visit www.mercurymarine.com and click on "propellers".



lifelong **reliability**

Delivering peace of mind is a leading priority with Mercury Mid-Range four-strokes. From the first time you turn the key to your hundredth fishing trip and beyond, you can count on them to perform. The advanced technology, durable components, smart features and unmatched fuel economy, combined with industry leading warranty coverage provide you the engine security you expect for many years to come.



FourStroke EFI Series 40 / 50 / 60

- **Electronic Fuel Injection (EFI)**
Ensures instant starts, great all-round performance, reliability and fuel economy.
- **Inline Design**
Superior torque and power.
- **SmartCraft Compatible and Troll Control**
Link your engine to the SmartCraft Troll Control Instruments. They allow you to set your RPM to a fixed trolling speed for fishing or driving relaxed through no-wake zones.
- **Engine Guardian**
Protects your investment and boating experience by providing early indication if the engine is not operating as designed.
- **BigFoot Models**
BigFoot models deliver more thrust, better performance for bigger and heavier boats, and

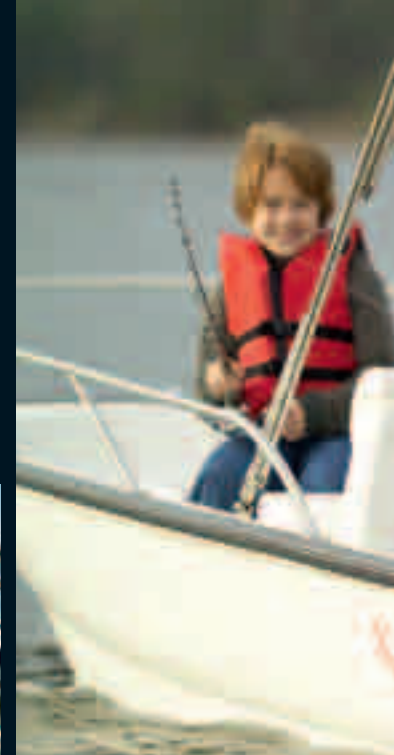
are equipped with larger gears and shafts for use in tougher conditions.

- **Easy Shifting**
The F60/50/40s gear case is designed for easy and smooth gear shifting.
- **Mercury Propellers**
Get the best performance out of your engine and optimize fuel economy¹.
- **5-Year Warranty**

(1) The Mercury website features a Propeller Selector Program. Visit www.mercurymarine.com and click on "propellers".



Five-year limited non-declining, factory-backed.
Conditions and exclusions apply.
Not applicable for commercial
and racing applications.



the **first** manual **starting EFI** models

Mercury's history is a legend of innovation. Since 1939, when Carl Kiekhaefer, father of the Mercury outboards, built the first outboard with forged aluminum pistons, Mercury has been setting the standard in every aspect of marine design and innovation. Mercury is setting the standard again with the introduction of the first EFI outboards in the 25/30 hp category and even more, the first to offer a battery-free EFI system on both the 25 hp and 30 hp manual start models.



FourStroke EFI Series 25 / 30



- **Tuned Cowl Induction**

Eliminates water intrusion and makes for the quietest engines in the class.

- **Electronic Fuel Injection (EFI)**

Ensures instant starts, great all-round performance, reliability and fuel economy.

- **Rope start on electronic models**

All electric start models come standard with a manual recoil starter for peace of mind.

- **Inline 3 cylinder**

Inline design and 3 cylinders for better performance.

- **Multi Function Tiller Handle**

Take full control with one hand. With the tiller handle you control engine shifting, speed and you steer your boat. The throttle friction can be adjusted.

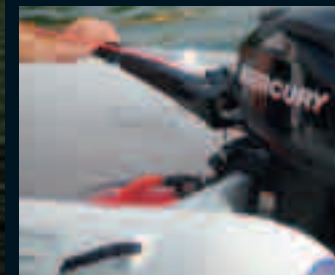
- **Dual water pick-ups**

Gets the best performance out of your engine and protects your engine against overheating, especially when navigating through shallow and weed-filled water.

- **5-Year Warranty**



Five-year limited non-declining, factory-backed.
Conditions and exclusions apply.
Not applicable for commercial
and racing applications.



Four-Stroke power to make the **family** complete

The four-stroke engines will certainly appeal to many enthusiasts of inflatable, rigid inflatable, small fiberglass and aluminum boats. Smooth quiet performance, low emissions and fuel consumption, and an attractive modern design are the standard features of these engines.

The 8, 9.9, 15 and 20 hp four-stroke models are all loaded with features designed to make engine operation safe, easy and hassle free.

Small, portable power, great pleasure.



FourStroke

8/9.9/15/20



- **Twin Cylinder**

Smooth running and more power.

- **Lightweight**

The lightest engines in their class for your convenience.

- **Rope start on electronic models**

All electric start models come standard with a manual recoil starter for peace of mind.

- **Fuel primer (8/9.9/15/20)**

The Mercury unique fuel primer ensures instant starts.

- **Low oil pressure visual warning system**

Protects your investment and gives 100% peace of mind.

- **Multi Function Tiller Handle (8/9.9/15/20)**

Take full control with one hand. With the tiller handle you control engine shifting, speed and you steer your boat. The throttle friction can be adjusted.

- **180° Tiller handle (8/9.9/15/20)**

The tiller handle tilts up for driving comfort and folds down for compact storage.

- **BigFoot models**

BigFoot models deliver more thrust, better performance for bigger and heavier boats, and are equipped with larger gears and shafts for use in tougher conditions.

- **5 trim positions and shallow water drive**

Use your engine everywhere, even in shallow waters.

- **5-Year Warranty**

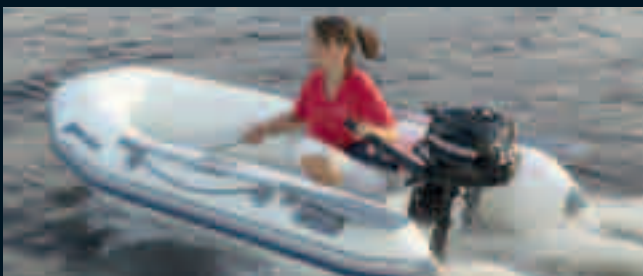


Five-year limited non-declining, factory-backed.
Conditions and exclusions apply.
Not applicable for commercial
and racing applications.



grab it and go

Taking the fun with you is a great advantage of small boats and especially inflatable boats. Mercury offers a complete line of portable four-stroke outboards that are extremely light, with the widest range of models to choose from. The range provides easy portability with smart, simple-to-use features. Plus clean, quiet, fuel efficient four-stroke performance makes them the obvious power of choice.



FourStroke 2.5/3.5/4/5/6

- **Large displacement powerhead**
Superior performance and better fuel efficiency.
- **Decompression system (4/5/6)**
The automatic cylinder decompression system ensures effortless starting.
- **Integrated fuel tank (2.5/3.5/4)**
Integrated fuel tank with shut-off valve to maximize space in the boat.
- **CDI ignition**
Maintenance-free ignition system that provides easy starting.
- **Visual warning system**
Visual low oil pressure warning system for 100% peace of mind.

- **Twist-grip throttle**
Take full control with one hand.
- **6 / 4 trim positions**
6 trim positions (4/5/6), 4 on the 3.5/2.5, plus shallow water drive allow easy access to remote and in shallow waters.
- **Through Prop Exhaust (4/5/6)**
For quiet, smoke-free operation.
- **5-Year Warranty**



Five-year limited non-declining, factory-backed.
Conditions and exclusions apply.
Not applicable for commercial
and racing applications.

Mercury **Propellers**

Besides your engine, your propeller is the single most important factor that influences your boat's performance.

The selection of the right propeller is vital to every aspect of handling, speed, acceleration, engine life, fuel economy and even safety.

We offer more models than anyone else. In fact over 700, from standard to custom-built, high-performance and racing propellers.

We have a proven reputation for highest-quality propellers, superior strength, durability and all-round performance.

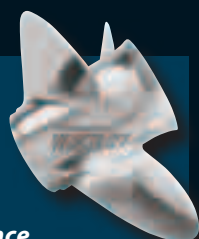
Mercury is the world's largest designer and manufacturer of propellers.

Go to www.mercurymarine.com/prop_selector to choose the right prop for your boat and your boating application.



Enertia

Our revolutionary new propeller made from our exclusive X7 alloy. It delivers the best acceleration and top speed by using thinner blades and higher rake angles. The ultimate design for high-horsepower boats. In 14" and 22" pitch.



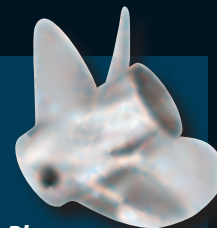
Vengeance

A proven blade design in Stainless Steel in either rotation which pitches from 9" to 25". Better acceleration and handling than conventional 3-bladed aluminum props, and five times stronger.



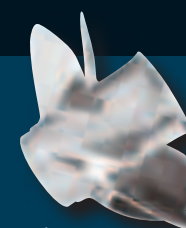
Laser II

If you like to run fast and light, this is the prop for you. Its thinner blades reduce drag and increase speed with the prop offered in both rotations with 19" and 27" pitch.



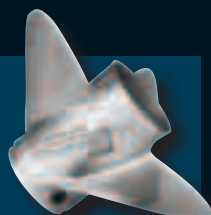
Trophy Plus

Four-bladed Stainless Steel with 12" to 23 pitch, delivering unbelievable bow lift, improved handling and quick planing. The ideal prop for ski and wakeboard applications. For outboards 75 hp and up.



Trophy Sport

Same characteristics as the Trophy Plus, but for outboards between 30 and 60 hp.



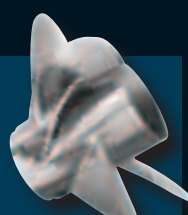
Tempest Plus

Large diameter for high transoms and larger outboards. Increased acceleration and better handling. In 13" to 29" pitch.



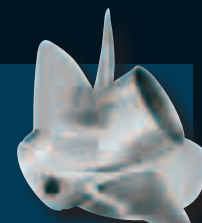
Mirage Plus

Designed for high horsepower and heavier engines. In 13" to 29" pitch.



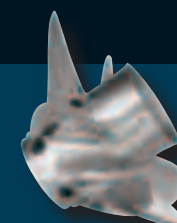
Vensura

For twin outboard applications. They perform beautifully in offshore and sports boat applications. In 17" to 23" pitch.



Revolution 4

For better performance in big outboard sports boats. Dramatically improves mid-range acceleration and top speed. In 19" to 23" pitch.



Highfive

An innovative 5-blade performer for smooth acceleration to pull skiers effortlessly. In 17" to 26" pitch.



take **good care** of your engine

When you've made an investment in a beautifully engineered Mercury outboard, it makes sense to keep it that way and protect your warranty by only using genuine Quicksilver parts, accessories and maintenance products. Quicksilver is the most respected name in the outboard after-market, worldwide, because all of its products are specifically developed for the marine environment. Demand your dealer uses only Quicksilver products!

before the boating season >> pre-season preparations

The pre-season time is the most exciting time of the year. Boats and engines are taken out of the garage and you start preparing your boat for the next summer. Quicksilver offers a complete range of products to prepare your engine and boat to be in perfect shape for a season full of boating excitement. Visit your dealer in spring to learn about our pre-season promotion campaigns.

during the boating season

Who cares about visiting a marine dealer during summer time ?

To keep your engine in perfect shape and performing flawlessly, you need the best oil.

Quicksilver offers a complete range of top quality oils to help you get the best out of your engine.

You want to try something new ?

Visit your Mercury dealer and discover Quicksilver's wide range of water sports accessories.

after the boating season >> winterizing

After a season full of boating fun, your engine needs a winter break. Autumn is the perfect time to prepare your boat and engine for winter storage. Quicksilver offers the broadest range of winterizing products to keep your boat and engine in perfect shape during winter time. Visit your Mercury dealer to learn about our winterizing promotion campaigns.

specifications

Supercharged induction system

Multi point sequential fuel injection

Multi point sequential direct fuel injection

Carburetted fuel induction

Cycle

	Models ⁽¹⁾	Kilowatts ⁽²⁾	Max.RPM at Full Throttle	Cylinders	Smart Craft Compatible	Displacement	Starting	Gear Ratio	Gear Shift	Steering
4	Verado 350 SCI*	275	6200-6800	6 (in-line)	YES	2598 cc	Electric	1.75:1	DTS	EHPs
4	Verado 300	221	5800-6400	6 (in-line)	YES	2598 cc	Electric	1.85:1	DTS	EHPs
4	Verado 250	184	5800-6400	6 (in-line)	YES	2598 cc	Electric	1.85:1	DTS	EHPs
2	OptiMax 250	184	5250-5750	V-6 (60° Vee)	YES	3032 cc	Electric	1.75:1	F-N-R	Remote - BTO
4	Verado 225	166	5800-6400	6 (in-line)	YES	2598 cc	Electric	1.85:1	DTS	EHPs
2	OptiMax 225	166	5000-5750	V-6 (60° Vee)	YES	3032 cc	Electric	1.75:1	DTS / F-N-R	Remote - BTO
4	Verado 200	147	5800-6400	4 (in-line)	YES	1732 cc	Electric	2.08:1	DTS	Remote - BTO
2	OptiMax 200	147	5000-5750	V-6 (60° Vee)	YES	3032 cc	Electric	1.75:1	F-N-R	Remote - BTO
4	Verado 175	129	5800-6400	4 (in-line)	YES	1732 cc	Electric	2.08:1	DTS	Remote - BTO
4	Verado 150	110.3	5800-6400	4 (in-line)	YES	1732 cc	Electric	2.08:1	DTS	Remote - BTO
4	150 EFI	110.3	5000-6000	4 (in-line)	YES	3000 cc	Electric	1.92:1	F-N-R	Remote - BTO
2	OptiMax 150 Pro XS	110.3	5250-5750	V-6 (60° Vee)	YES	2507 cc	Electric	1.87:1	F-N-R	Remote - BTO
2	OptiMax 125	91.9	5000-5750	3 (in-line)	YES	1526 cc	Electric	2.07:1	F-N-R	Remote - BTO
4	115 EFI	84.6	5800-6400	4 (in-line)	YES	1732 cc	Electric	2.33:1	F-N-R	Remote - BTO
2	OptiMax 115	84.6	5000-5750	3 (in-line)	YES	1526 cc	Electric	2.07:1	F-N-R	Remote - BTO
4	100 EFI	73.6	5000-6000	4 (in-line)	YES	1732 cc	Electric	2.33:1	F-N-R	Remote - BTO
2	OptiMax 90	66.2	5000-5750	3 (in-line)	YES	1526 cc	Electric	2.33:1	F-N-R	Remote - BTO
4	80 EFI	58.8	5000-6000	4 (in-line)	YES	1732 cc	Electric	2.33:1	F-N-R	Remote - BTO
2	OptiMax 75	55.2	5000-5750	3 (in-line)	YES	1526 cc	Electric	2.33:1	F-N-R	Remote - BTO
4	60 EFI Bigfoot	44.1	5500-6000	4 (in-line)	YES note*	995 cc	Electric	2.33:1	F-N-R	Remote - BTO
4	60 EFI	44.1	5500-6000	4 (in-line)	YES note*	995 cc	Electric	1.83:1	F-N-R	Remote - BTO
4	50 EFI	36.8	5500-6000	4 (in-line)	YES note*	995 cc	Electric	1.83:1	F-N-R	Remote - BTO
4	40 EFI	29.4	5500-6000	3 (in-line)	YES note*	747 cc	Electric	2.00:1	F-N-R	Remote - BTO
4	30 EFI	22.1	5250-6250	3 (in-line)	N/A	526 cc	Manual or Electric	1.92:1	F-N-R	Tiller or Remote
4	25 EFI	18.4	5000-6000	3 (in-line)	N/A	526 cc	Manual or Electric	1.92:1	F-N-R	Tiller or Remote
4	20 FourStroke	14.7	5400-6100	2 (in-line)	N/A	351 cc	Manual or Electric	2.15:1	F-N-R	Tiller or Remote
4	15 FourStroke	11.0	5400-5600	2 (in-line)	N/A	351 cc	Manual or Electric	2.15:1	F-N-R	Tiller or Remote
4	9.9 FourStroke	7.28	5000-6000	2 (in-line)	N/A	208 cc	Manual or Electric	2.08:1	F-N-R	Tiller or Remote
4	9.9 FourStroke Bigfoot	7.28	5000-6000	2 (in-line)	N/A	208 cc	Manual or Electric	2.42:1	F-N-R	Tiller or Remote
4	8 FourStroke	5.88	5000-6000	2 (in-line)	N/A	208 cc	Manual or Electric	2.08:1	F-N-R	Tiller or Remote
4	6 FourStroke	4.41	5000-6000	1	N/A	123 cc	Manual	2.15:1	F-N-R	Tiller -RO
4	5 FourStroke Sailpower	3.68	4500-5500	1	N/A	123 cc	Manual	2.15:1	F-N-R	Tiller -RO
4	5 FourStroke	3.68	4500-5500	1	N/A	123 cc	Manual	2.15:1	F-N-R	Tiller -RO
4	4 FourStroke	2.94	4500-5500	1	N/A	123 cc	Manual	2.15:1	F-N-R	Tiller -RO
4	3.5 FourStroke	2.57	5000-6000	1	N/A	85 cc	Manual	2.15:1	F-N	Tiller
4	2.5 FourStroke	1.84	4500-5500	1	N/A	85 cc	Manual	2.15:1	F-N	Tiller

Alternator System	Trim Positions	Fuel Tank	Fuel Requirements	Weight ⁽³⁾	Recommended Boat Transom Height	Counter Rotation
70 amp (882 watt)	EHPT	N/A	UL95R	300 kg	L - XL - XXL	CXL - CXXL
70 amp (882 watt)	EHPT	N/A	UL95R *note	288 kg	L - XL - XXL	CXL - CXXL
70 amp (882 watt)	EHPT	N/A	UL90R	288 kg	L - XL - XXL	CXL - CXXL
60 amp (756 watt)	EHPT	N/A	UL90R	229 kg	L - XL - XXL	CXL - CXXL
70 amp (882 watt)	EHPT	N/A	UL90R	288 kg	L - XL - XXL	CXL - CXXL
60 amp (756 watt)	EHPT	N/A	UL90R	225 kg	L - XL - XXL	CXL - CXXL
70 amp (882 watt)	EHPT	N/A	UL90R	231 kg	L - XL	CXL
60 amp (756 watt)	EHPT	N/A	UL90R	225 kg	L - XL	CXL
70 amp (882 watt)	EHPT	N/A	UL90R	231 kg	L - XL	CXL
70 amp (882 watt)	EHPT	N/A	UL90R	231 kg	L - XL	CXL
60 amp (756 watt)	EHPT	N/A	UL90R	206 kg	L - XL	CXL
60 amp (756 watt)	EHPT	N/A	UL90R	195 kg	L - XL	CXL
60 amp (756 watt)	EHPT	N/A	UL90R	170 kg	L - XL	N/A
50 amp (630 watt)	EHPT	N/A	UL90R	181 kg	L - XL	N/A
60 amp (756 watt)	EHPT	N/A	UL90R	170 kg	L - XL	N/A
50 amp (630 watt)	EHPT	N/A	UL90R	181 kg	L - XL	N/A
60 amp (756 watt)	EHPT	N/A	UL90R	170 kg	L	N/A
50 amp (630 watt)	EHPT	N/A	UL90R	181 kg	L	N/A
60 amp (756 watt)	EHPT	N/A	UL90R	170 kg	L	N/A
18 amp (226 watt)	EHPT	N/A	UL90R	112 kg	L	N/A
18 amp (226 watt)	EHPT	N/A	UL90R	112 kg	L	N/A
18 amp (226 watt)	EHPT	N/A	UL90R	112 kg	L	N/A
18 amp (226 watt)	EHPT or GAT or MTT	N/A	UL90R	98 kg	S - L	N/A
15 amp (186 watt)	EHPT or GAT or MTT	25 L	UL90R	78 kg	S - L	N/A
15 amp (186 watt)	EHPT or MTT	25 L	UL90R	71 kg	S - L	N/A
12 amp (138 watt)	6 & SWD or EHT	12 L	UL90R	52 kg	S - L	N/A
12 amp (138 watt)	6 & SWD or EHT	12 L	UL90R	52 kg	S - L	N/A
6 amp (76 watt) ESM	6 & SWD or EHT	12 L	UL90R	38 kg	S - L	N/A
6 amp (76 watt) ESM	6 & SWD or EHT	12 L	UL90R	38 kg	S - L	N/A
6 amp (76 watt) ESM	6 & SWD	12 L	UL90R	38 kg	S - L	N/A
OPT	6 & SWD	1.1 L INT - RO	UL90R	25 kg	S - L	N/A
4 amp (50 watt)	6 & SWD	1.1 L INT - RO	UL90R	25 kg	S - L	N/A
4 amp (50 watt) ML	6 & SWD	1.1 L INT - RO	UL90R	25 kg	S - L	N/A
OPT	6 & SWD	1.1 L INT - RO	UL90R	25 kg	S - L	N/A
N/A	4	0.95 litre INT	UL90R	17 kg	S - L	N/A
N/A	4	0.95 litre INT	UL90R	17 kg	S - L	N/A

GEAR SHIFT	DTS - Digital Throttle and shift F-N-R - Mecanical Forward Neutral Reverse F-N - Forward Neutral
STEERING	EHPS - Electric Hydraulic Power steering B.T.O. - Big Tiller optional RO. - Remote optional
ALTERNATOR SYSTEM	ESM - On Electric Start Models OPT - Optional OPT - Optional 4 amp (50 watt) lighting, 2 amp (25 watt) charging 4 ML - ML Models only
TRIM SYSTEM	EHPT - Electric Hydraulic Power Trim and Tilt EHT - Electric Hydraulic Tilt (no Trim) GAT - Gas assist trim MTT - Manual Trim and Tilt SWD - Shallow Water drive
FUEL TANK	INT - Integrated fuel tank RO - remote optional
RECOMMENDED BOAT TRANSOM HEIGHT	381 mm (S) - 508 mm (L) - 635 mm (XL) - 762 mm (XXL)
COUNTER ROTATION	635 mm (CXL) - 762 mm (CXXL)
SMARTCRAFT COMPATIBLE	Note* not for trim - Speed - fuel level
FUEL	UL90R - 90RON minimum. UL95R - 95RON Minimum *note 90RON compatible



* Verado 350 SCi comes with 2 years of factory backed warranty.

For more information on the propeller that is right for you, please see your dealer.
 (1) Model offering may vary from one country to another.
 Please see your local dealer for specific information.
 (2) HP/KW measured at propshaft in accordance with ICOMIA 28.
 (3) Dry weight specification is for lightest model and excludes engine oil, rigging hardware and propeller.

knowledge is power

Find detailed engine specifications and features
at www.mercury-marine.eu – the ultimate source for Mercury outboards.

www.mercury-marine.eu



© 2011 Brunswick Marine in EMEA. All Rights Reserved.

Brunswick Marine in EMEA continuously explores means to improve the products it designs, manufactures and distributes. Every effort is made to produce sales and service literature which is current. Changes to specifications of engines, boats and accessories are ongoing. This brochure should not be regarded as a precise guide to the latest specifications. This brochure is also not an offer for sales of any particular engine, boat or accessory. Distributors and dealers are not agents of Brunswick Marine in EMEA or one of its affiliates and they have no authority to bind Brunswick Marine in EMEA by any express undertaking or representation, including but not limited to representations of product, sales, applications or service nature. Not all products are available in all countries and some are available only in limited quantities. Some products shown in this catalogue are equipped with optional accessories. Please see your local dealer.
Visit <http://www.brunswick-marine.com>



BRUNSWICK MARINE in EMEA
ISO 9001 - 2000 CERTIFIED

The quality system of
Brunswick Marine in EMEA
is ISO 9001:2000 certified