



Waterski



Diving



Fishing



Touring



Tender

**QUICKSILVER**<sup>®</sup>  
INFLATABLES

Discover a wealth of brand new features on these compact yet roomy and sporting boats.





# High value and affordable fun on the water

QUICKSILVER is known for its outstanding quality and excellent reliability at a competitive price.

The QUICKSILVER brand is owned by the Brunswick group. Brunswick is featuring the world's premier brands in the marine, fitness, bowling and billiards industries. Brunswick Marine in EMEA has been setting the standards for well over 60 years.

## What's new for 2010 with Quicksilver Inflatables?

For 2010 QUICKSILVER will introduce 3 new products in its range of inflatable boats and RIBs :

The OCEAN RUNNER RIB Series. This product range consists of 3 models.

Each of the 3 models can be equipped with a console, in order to provide the best experience on the water. The attractive pricing allows everyone the opportunity to enjoy boating.

The DINGHY Series is launched with 2 models. Both the DINGHY 200 and 240 have a complete inflatable floor and keel.

Although set at a very competitive price, these boats continue to sustain QUICKSILVER quality, including the thermo-seams process and a top quality PVC fabric.

The AIR DECK FISHING models, a 3.10 m and a 3.40 m, have been added to the QUICKSILVER range to offer both adventurers and fishermen a light weight boat, easy to set-up and transport. This new dark grey boat with its Air Deck floor and keel is entirely inflatable.

## The very best in engine power and navigation



You may choose among our vast range of robust and powerful Mercury or Mariner outboard engines, the most popular of all times. You will own state of the art engine power and be able to take your boat out to enjoy fun on the water.

Moreover, you will benefit from a national and international network of dealers.

On top of this, a five-year warranty program is applicable for all eligible Mercury and Mariner outboard engines\*.

The program will be offered to owners of new Mercury and Mariner outboard engines\*\*.

The warranty applies to Mercury and Mariner Verado®, OptiMax® and Four Stroke engines purchased in Europe, the Middle East, Africa and the CIS region. The five years of comprehensive factory-backed coverage includes labour for failures caused by defects in material or workmanship. More so, the new warranty is transferable if the engine is sold within the five-year warranty period. The warranty applies to recreational use only. Warranties on high performance engines and engines used for racing or commercial purposes remain unchanged.

\* Conditions and exclusions apply. Promotion excludes Mercury Racing and Mercury Performance Products.

\*\* Provided that all extended warranty conditions are met.

## Content

06	Dinghy
08	Ultra Light
10	Air Deck Deluxe
12	Air Deck Fishing
14	Sport
16	Adventure
18	Heavy-Duty
20	Ocean Runner
22	Accessories
23	Specifications



# Benefits

Quicksilver benefits include :



QUICKSILVER Inflatables are produced with MEHLER Haku®, a heavy-duty, long-life fabric, which offers excellent resistance against UV, cuts, abrasions and normal wear and tear. This fabric also offers maximum resistance against high temperature, moisture and dirt.

QUICKSILVER Inflatables offer one of the best guarantees in the market including 5 years warranty on the Haku® fabric and air holding thermowelded seams giving you assurance of our commitment to quality (excluding Dinghy Series).



QUICKSILVER applies the exclusive technique of THERMOWELDING when assembling the PVC Haku® fabric of its tubes. This process combines fusion welding with high pressure bonding of double internal/external tapes, and is used to assemble the different parts of the tubes with welds stronger than the material itself.



Fold-down rowlocks are stored on the outside of the tube. The combined oar retainer and rope holder provide an elegant and clean look. The swim platform-mounted davits are easy to install.



To protect against cracking and decay, all transoms are made waterproof by two heavy-duty ABS layers which ensure greater durability compared to traditional plywood transoms. Transoms are equipped with an engine pad and plate for your outboard as well as a standard transom cap to avoid knocks when rigging the boat. Stainless steel towing holes are included in the transoms for skiing, wakeboarding or tubing.

## The floors

### Air Deck floor

All Air Deck models are featured with a X-stitch inflated floor that provides additional floor rigidity compared with traditional drop-stitching. Our Air Deck floors are also featured with anti-slip.

### Enduro floor

The Enduro models are equipped with a sectional fibreglass floor. Fibreglass floors replace the traditional plywood floors that are less water resistant.

### XS floor

The XS floor is featured on all XS models. These are highly resistant floors made of aluminium and suited for high demanding applications or extensive use.

### Rigid Hull floor

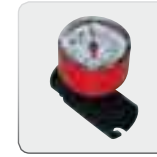
The rigid hull floor is composed of a fibreglass hull and deck. This design offers total boating pleasure and increased safety. This type of floor is used exclusively on the OCEAN RUNNER. These RIBs are ISO compliant and certified.

# Standard equipment & features

Regardless of the model you choose, your QUICKSILVER Inflatables is delivered with the following accessories:



QS double action air pump (+ repair kit)



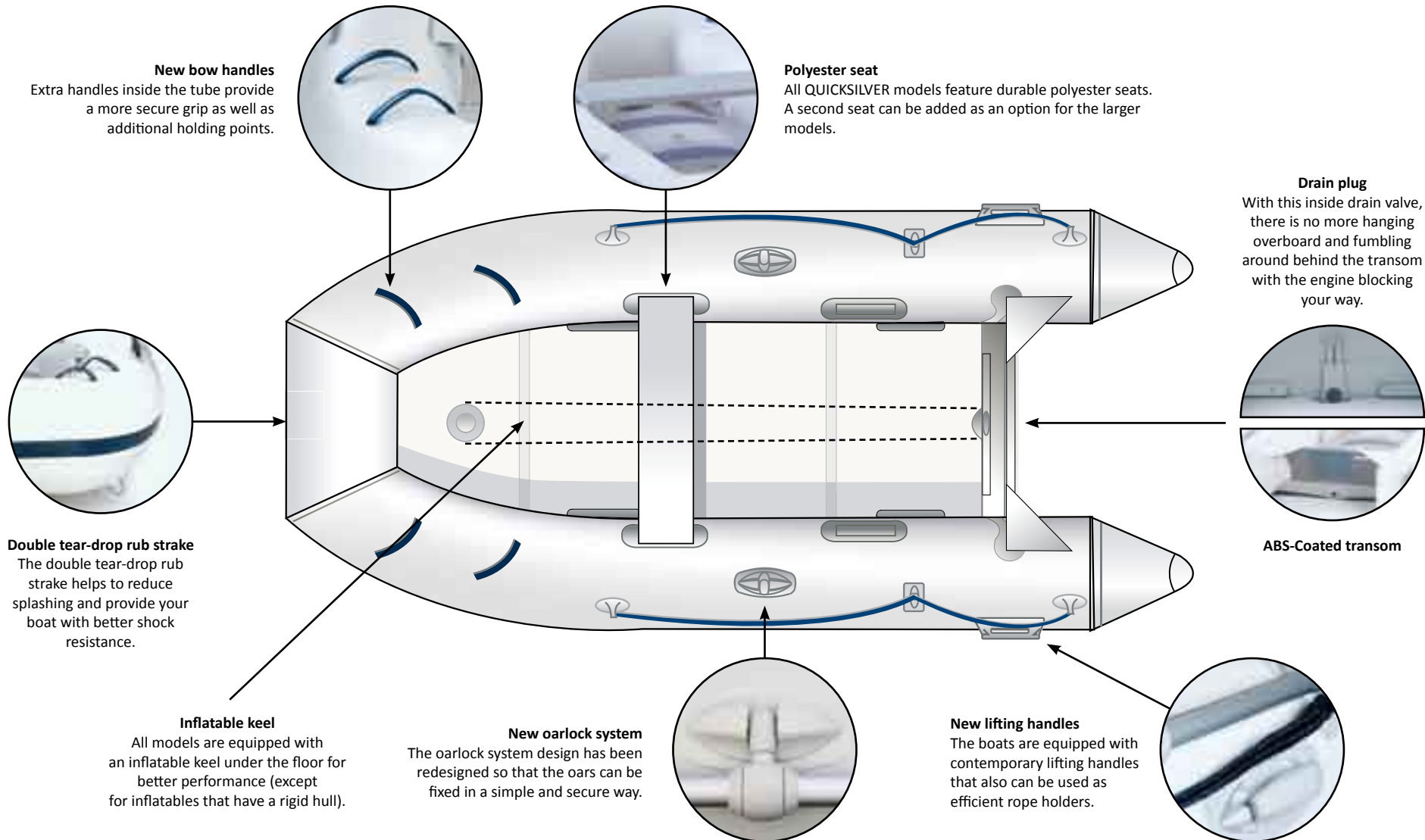
Pump gauge



Seat



Carrying bag for your boat





Dinghy 240





# DINGHY

240 / 200

## Ultra Light

	240	200
Max. persons	3	2
Max. HP	3,5	2,5
Max. engine weight (kg)	20	20
Weight (kg)	22	19
Length (m)	2,4	2,0



***These two new models are likely to be adopted by individuals on vacation, anglers and, why not, children who want to have fun near the shore.***

**2 years warranty on DINGHY series.**

- Very competitive pricing.
- Two additional inflatable compartments for increased safety.
- Standard bench seat.
- Compact size (ideal for transport and if used as a tender).



Ultra Light 250







# ULTRA LIGHT

250 / 220

## Ultra Light

	250	220
Max. persons	3+1	3
Max. HP	6	4
Max. engine weight (kg)	30	30
Weight (kg)	35	31
Length (m)	2,50	2,20



Integrated soft PVC handle



Anti slip patches

- o Comfortable and versatile.
- o Compact size.

- o Lightweight.
- o Rounded cones decrease the craft length whereas the inner space remains unchanged.

- o High quality inflatable floor ensures total comfort.
- o The inflatable keel provides increased safety on board and ensures better steering and handling performance.

Air Deck Deluxe 340







# AIR DECK Deluxe

340 / 310 / 270 / 240

Air Deck Deluxe	340	310	270	240
Max. persons	5	4	3+1	3
Max. HP	20	15	10	4
Max. engine weight (kg)	60	60	45	30
Weight (kg)	43	40	37	34
Length (m)	3,40	3,10	2,70	2,40



Integrated soft PVC handle



Anti slip patches

340

**Are you looking for an inflatable boat with an elegant and contemporary design? With an attractive design and its faultless quality, the AIR DECK DELUXE series offers top of the range quality in build and design.**

- Dual colour PVC Haku® tube in white with navy blue & light grey decoration.
- Air Deck inflatable floor (see product benefits).
- Inflatable keel for genuine performances.
- Rubbing strake around the tube.
- Polyester bench seat.
- Safety handles for secure grip.
- Protected stern transom.

**Thanks to all the above features, the AIR DECK DELUXE crafts set an example for quality and great design.**

**Models 310 & 340 can be used for short coastal trips or inland and intra coastal boating around islands.**

Air Deck Fishing 340







# AIR DECK Fishing

340 / 310

## Air Deck Fishing

	340	310
Max. persons	5	4
Max. HP	20	15
Max. engine weight (kg)	60	60
Weight (kg)	48	42
Length (m)	3,40	3,10



340

**Another new product range, including the same technical features as the AIR DECK DELUXE. The AIR DECK FISHING is ideal for adventurers and fishermen.**

- o Dark grey PVC Haku® fabric.
- o Air Deck inflatable floor (see product benefits).
- o Tube with standard protection when mooring and a bow roller plus a rubbing strake around the tube.
- o Rod holder at the rear end of the tube.
- o Two removable polyester bench seats with an integrated foam cushion.

**With the QUICKSILVER 5-year warranty on the fabric and seams, the AIR DECK FISHING is the ideal craft for your next fishing trip.**

Sport 470 XS







# SPORT

470 / 415 / 365 XS  
340 / 310 / 270 / 240 ENDURO

Sport	XS			ENDURO			
	470	415	365	340	310	270	240
Max. persons	11	8	6	5	4	3+1	3
Max. HP	60	30	25	20	15	10	4
Max. engine weight (kg)	130	85	85	60	60	45	30
Weight (kg)	192	118	99	61	55	50	43
Length (m)	4,70	4,15	3,65	3,40	3,10	2,70	2,40



365 XS



Safety rope all around the boat on XS models



Stainless steel D ring

**The SPORT ENDURO range includes 4 models in grey PVC Haku® fabric.**

**The models 240 up to 340 include:**

- Enduro floor made of high-resistance material. No specific maintenance required; simply rinse it with water (see product benefits).

**Models XS 365, 415 & 470, with certification for more engine power and a more rigid structure:**

- XS floor made of aluminium which is exceptionally resistant (see product benefits).
- Increased power allows coastal family boating, water sports and sea fishing.
- Rounded cones provide an elegant line to the boat.



The 470 XS has a new hull which is shaped like a catamaran with 2 small tubes next to the main one. This model can be equipped with an engine up to 60 HP and with a modular sporting console.



**Jockey Junior**

Available on:

365 XS

**Jockey Sport**

Available on:

415 XS  
470 XS

**Pack Comfort**

Available on:

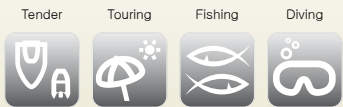
415 XS  
470 XS



Adventure 415 XS







# ADVENTURE

470 / 415 / 365 XS  
340 / 310 / 270 ENDURO

Adventure	XS			ENDURO		
	470	415	365	340	310	270
Max. persons	11	8	6	5	4	3+1
Max. HP	60	30	25	20	15	10
Max. engine weight (kg)	130	85	85	60	60	45
Weight (kg)	192	122	102	61	55	50
Length (m)	4,70	4,15	3,65	3,40	3,10	2,70



470



Reinforced and anti slip tube



Stainless steel D ring

**For all adventurers, we have created the ADVENTURE series in dark green, PVC Haku® fabric.**

**The models 240 up to 340 include :**

- o Enduro floor made of high-resistance composite material that needs no specific cleaning, you only have to rinse it with water (see product benefits).
- o Particularly designed for anglers.

**Models XS 365, 415 & 470, with certification for more engine power and a more rigid structure :**

- o XS floor made of aluminium which is exceptionally resistant (see product benefits).
- o Rounded cones decrease the craft's length whereas the inner space remains unchanged.

- o Especially designed to suit the needs of sea fishermen and scuba divers.



The 470 XS has a new hull which is shaped like a catamaran with 2 small tubes next to the main one. This model can be equipped with an engine up to 60 HP.



**Jockey Junior**  
Available on :

365 XS

**Jockey Sport**  
Available on :

415 XS  
470 XS

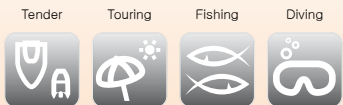
**Pack Comfort**  
Available on :

415 XS  
470 XS

Heavy-Duty 415







# HEAVY-DUTY

470 / 415 / 365 XS

Heavy-Duty XS	470	415	365
Max. persons	11	8	6
Max. HP	60	30	25
Max. engine weight (kg)	130	85	85
Weight (kg)	192	118	98
Length (m)	4,70	4,15	3,65

470



Reinforced and anti slip tube



Stainless steel D ring

- o Red-tube boats easy to spot. Used for rescue or coastal surveillance, also chosen by divers and anglers to be easily spotted at sea.
- o Designed with the new rear cones, decreasing the craft's length while maintaining its inner space.
- o XS floor made of aluminium which is exceptionally resistant (see product benefits).



The 470 XS has a new hull which is shaped like a catamaran with 2 small tubes next to the main one. This model can be equipped with an engine up to 60 HP, enabling a rescue team to quickly get to the scene in case of an emergency.



**Jockey Junior**  
Available on:

365 XS

**Jockey Sport**  
Available on:

415 XS  
470 XS

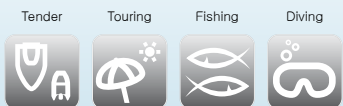
**Pack Comfort**  
Available on:

415 XS  
470 XS

Ocean Runner 410







# OCEAN RUNNER

410 / 340 / 290

Ocean Runner	410	340	290
Max. persons	7	5	3+1
Max. HP	30	20	10
Max. engine weight (kg)	85	60	45
Weight (kg)	111	88	64
Length (m)	4,10	3,40	2,90



Bow storage locker  
(on the 340 & 410)



Internal & external  
towing / lifting points

340

**The OCEAN RUNNER boats consist of three new RIBs introduced under the QUICKSILVER brand. With their sportive and dynamic lines they are designed to support the pleasure of the boating. Based on your choice of water activities you can customize your boat with specific accessories packages.**

## OCEAN RUNNER 290

- For safe intra coastal navigation and ideal for easily shuttling passengers.
- The optional "Junior" single jockey console is perfect for those who are seeking a more sportive look.

## OCEAN RUNNER 340

- Boat with a more sporty aptitude; can be equipped with the optional "Junior" or "Sport" consoles.
- Bow locker will prevent your items from getting wet.
- Ideal for a yacht with davits or rear storage.

## OCEAN RUNNER 410, available in three versions:

- Open, with tiller operated outboard engine.
- More sporty version, with double Sport jockey console.
- Comfort version, with Comfort Centre console and 2 man comfort seat.



**Jockey Junior**  
Available on:

290  
340

**Jockey Sport**  
Available on:

340  
410

**Pack Comfort**  
Available on:

410

# Accessories



See Accessories Guide for full offering and part numbers.

## Boat covers

All Quicksilver boat covers perfectly fit your boat and are produced in hi-tech polyester fabric with vinyl chloride coating, to make sure that your Quicksilver boat is well protected against dust, sunlight, scratches and other weather conditions in the water, during storage or on a trailer. The durable and high quality fabric is 100% waterproof and resistant to rot, mildew and UV light. The PVC coating on the outside makes cleaning of the cover easy. In all critical points the covers are reinforced for a longer life span.

Eyelets or buttonholes all around the cover and the throttle closing rope are functional and should always be fastened to keep the cover tight especially in windy conditions. In all cases covers should be secured with straps under the boat in storage or when the boat is towed on a trailer.

Each cover has its own useful storage bag, made of the same material as the cover. Each cover features a top pole that can be used together with the optional telescoping hip pole. We recommend the use of a hip pole to avoid the forming of water pockets in the cover.

There is a 2 year warranty against manufacturing and raw material defects.

*Remember, life vests float. You don't.  
Always use your engine's safety stop lanyard.*

### Bow dodger / bag kit

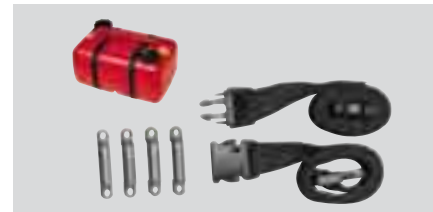
Easy to fit, water-repellant Cordura® nylon bag closes with a non-corroding nylon zipper and hangs under the dodger.



PN 62-808646A2

### Fuel tank hold-down kit

Made with polypropylene strapping for superior strength. Quick-release buckles simplify replacement of the tank (fuel tank not included).



PN 62-809610

### Adjustable storage seat with cushion

The padded storage seat adjusts easily for use on 240 to 340 models. Easy to install and remove, size 25 cm high x 46 cm deep x 69-84 cm wide.



PN 62-809541A1

### Attachments

All attachments of your boat are available separately and can be fitted to meet your personal needs.

### PVC Repair kit

Contains two grey fabric patches and one tube of cement in a waterproof plastic canister.



See Accessories Guide for full offering and part numbers.

### Underseat storage bag

Durable, colour co-ordinated storage bag made from Cordura® nylon. Fits all Quicksilver Inflatables except 200 and 240 models.



PN 62-808647T

### Bravo automatic inflator & deflator

Works off a car battery to provide you with up to 300mb of pressure. Auto shutoff prevents over-pressure. Supplied complete with universal adaptors, including valve and battery connectors.



PN 62-803905

PN 62-8096321

### Combination bow light

Battery-operated Attwood® bow light with attachment base, designed for inflatables or other surfaces where screws cannot be used.



PN 67-808766

### Ski vests & life jackets

Vest with closed sides, CE approved 50N CE 95 EN 393, coated nylon shell and soft foam. CE-approved 100N life jacket, CE EN 395. See your dealer for full offering and part numbers.



See Accessories Guide for full offering and part numbers.



# Specifications

**NOTE:** Due to our constant efforts to offer the finest products available, Quicksilver inflatables reserves the right to change specifications without notice.

**WARRANTY:** Brunswick Marine in EMEA backs every 2010 Quicksilver Inflatables with a full five-year limited warranty on fabric and air holding seams (except for the DINGHY series for which it is two years).



		CE Design category	Bagged dimensions (cm)	Max. load. (kg)	Max. HP (all short shaft*)	Max. engine weight (kg)	Max. persons	Number of air chambers	Length (cm)	Width (cm)	Tube diameter (cm)	Weight incl. oars (kg)
Dinghy	240	D	100 x 56 x 26	315	3.5	20	3	2+keel+floor	240	132	34	22
	200	D	100 x 56 x 26	255	2.5	20	2	2+keel+floor	200	125	34	19
Ultra Light	250	D	102 x 56 x 35	481	6	30	3+1	3+keel+floor	250	152	40	35
	220	D	102 x 56 x 30	430	4	30	3	3+keel+floor	220	152	40	31
Air Deck Deluxe	340	C	102 x 56 x 46	670	20	60	5	3+keel+floor	340	152	40	43
	310	C	102 x 56 x 40	635	15	60	4	3+keel+floor	310	152	40	40
	270	D	102 x 56 x 35	545	10	45	3+1	3+keel+floor	270	152	40	37
	240	D	102 x 56 x 30	480	4	30	3	3+keel+floor	240	152	40	34
Air Deck Fishing	340	C	102 x 56 x 46	670	20	60	5	3+keel+floor	340	152	40	48
	310	C	102 x 56 x 40	635	15	60	4	3+keel+floor	310	152	40	42
Sport	470 XS*	C	175 x 78 x 48	1.800	60	130	11	8 + keel	470	230	60	192
	415 XS	C	145 x 65 x 38	950	30	85	8	3 + keel	415	188	48	118
	365 XS	C	128 x 62 x 35	750	25	85	6	3 + keel	365	175	46	99
	340 Enduro	C	102 x 56 x 46	570	20	60	5	3 + keel	340	152	40	61
	310 Enduro	C	102 x 56 x 40	520	15	60	4	3 + keel	310	152	40	55
	270 Enduro	D	102 x 56 x 35	450	10	45	3+1	3 + keel	270	152	40	50
	240 Enduro	D	102 x 56 x 30	390	4	30	3	3 + keel	240	152	40	43
Adventure	470 XS*	C	175 x 78 x 48	1.800	60	130	11	8 + keel	470	230	60	192
	415 XS	C	145 x 65 x 38	950	30	85	8	3 + keel	415	188	48	122
	365 XS	C	128 x 62 x 35	750	25	85	6	3 + keel	365	175	46	102
	340 Enduro	C	102 x 56 x 46	570	20	60	5	3 + keel	340	152	40	61
	310 Enduro	C	102 x 56 x 40	520	15	60	4	3 + keel	310	152	40	55
	270 Enduro	D	102 x 56 x 35	450	10	45	3+1	3 + keel	270	152	40	50
Heavy-Duty	470 XS*	C	175 x 78 x 48	1.800	60	130	11	8 + keel	470	230	60	192
	415 XS	C	145 x 65 x 38	950	30	85	8	3 + keel	415	188	48	118
	365 XS	C	128 x 62 x 35	750	25	85	6	3 + keel	365	175	46	98
Ocean Runner	410*	C	320 x 110 x 65	800	30	85	7	4	410	180	47	111
	340	C	270 x 120 x 50	515	20	60	5	3	340	176	41	88
	290	D	245 x 115 x 50	420	10	45	3+1	3	290	162	41	64

\*Except Ocean Runner 410 & 470 XS: Long shaft.

*Brunswick* FEATURES THE WORLD'S PREMIER BRANDS IN THE MARINE, FITNESS, BOWLING AND BILLIARDS INDUSTRIES. THIS COLLECTION OF BRANDS ILLUSTRATES BRUNSWICK'S COMMITMENT TO DELIVERING THE BEST PRODUCTS TO ITS CUSTOMERS AND THE INDUSTRIES IT SERVES. IT'S NO WONDER EVERY BRUNSWICK BRAND SHAPES THE JOYS OF LIFE – ON THE WATER, IN RECREATION CENTERS, AT FITNESS FACILITIES AND IN HOMES AROUND THE WORLD. *live life well*



BOATS



MARINE ENGINES



FITNESS



BOWLING



BILLIARDS



The quality system of Brunswick Marine in EMEA is ISO 9001:2000 certified

© 2009 Brunswick Marine in EMEA. All Rights Reserved.

Brunswick Marine in EMEA continuously explores means to improve the products it designs, manufactures and distributes. Every effort is made to produce sales and service literature which is current. Changes to specifications of engines, boats and accessories are ongoing. This brochure should not be regarded as a precise guide to the latest specifications. This brochure is also not an offer for sales of any particular engine, boat or accessory. Distributors and dealers are not agents of Brunswick Marine in EMEA or one of its affiliates and they have no authority to bind Brunswick Marine in EMEA by any express undertaking or representation, including but not limited to representations of product, sales, applications or service nature. Not all products are available in all countries and some are available only in limited quantities. Some products shown in this catalogue are equipped with optional accessories. Please see your local dealer.

Visit <http://www.BrunswickMarineEMEA.com>