



Mercury MerCruiser

Mercury MerCruiser® at the **heart** of better boating

Imagine. Leaving worry, stress and intimidation onshore.

Being in complete control of your vessel. Feeling absolute freedom the moment you hit the throttle. Maintaining your boat less often with zero aggravation. Knowing wherever you go, the world's largest marine dealer network is close by.

That is what we like to call better boating.

With MerCruiser at the heart of your boat, it's no longer a figment of your imagination. That's because everything we do – from product innovations to dealer support – is supported by a simple motivation: To make boating easier, more enjoyable and just plain better – no matter how you choose to spend your time on the water.

That commitment has made us a marine leader for over 60 years and the recipient of numerous prestigious awards. But more importantly, we use that experience to build better experiences. So next time you're looking for a new boat, make sure to look within. Because MerCruiser is at the heart of better boating.

a **certifyable** better boat



The Installation Quality Certification Program was developed to recognize MerCruiser Boatbuilder customers who have achieved higher manufacturing standards. It is the first and only comprehensive manufacturer-installation certification program in the industry.

- Certification applies leading-edge methodologies to create:
- Efficiencies and best practices specific to engine installation
 - World-class assembly and component specifications
 - Efficient installation processes
 - Industry standard end-of-line test procedures

Boat manufacturers that successfully complete the rigorous programme earn Installation Quality System Certified Manufacturer status and receive an additional year of Mercury limited factory warranty coverage on their MerCruiser-powered boats that are registered on and after their certification date for all worldwide registrations.



J.D. Power Award 2006, 2007
Mercury MerCruiser "Highest In Customer Satisfaction With Sterndrive Engines"

MerCruiser
SEACORE
system

220 HP – 425 HP (Bravo Models Only)

the **ultimate** saltwater system, unmatched corrosion protection, unequaled **performance**

Saltwater can take its toll on marine propulsion systems. That is why the SeaCore™ System from MerCruiser offers more than just improved corrosion resistance. It's as close as a marine propulsion system can come to being corrosion-proof.

The heart of the corrosion-resistant strength of the SeaCore System is the hardcoat anodizing of the drive alloy. This process actually changes the molecular structure of the XK-360 aluminium alloy, creating a shield against the ravages of galvanic corrosion. Hardcoat anodizing is also more abrasion resistant than case-hardened steel, but if the drive is scratched, the anodizing slows the destructive growth of corrosion through the drive surface.

The SeaCore System also provides corrosion protection for the engine with features like closed-cooling and a stainless steel package.

Four-year factory limited warranty for Installation Quality Certified Manufacturers*.

Four-year limited warranty against corrosion failure.



* Three-year limited warranty for noncertified installations

Corrosion protection features

- Industrial hardcoat anodized XK-360 aluminium alloy
- MerCathode® active corrosion protection
- SeaCore stainless steel package
- Closed-cooling system
- Dry-joint exhaust system
- EDP coated (Electro Deposition Paint) or stainless steel exhaust elbows
- Freshwater Flushing



MerCruiser Axius®

360 joystick control

a revolutionary piloting system that turns docking into something to look forward to

The MerCruiser Axius sterndrive system

The first fully intuitive piloting system on the water making piloting and docking your boat easier than ever. The Axius system combines a host of leading-edge technologies to give you the ultimate in confidence and control at the helm. Axius also delivers proven reliability with over 25 000 hours of testing.



MerCruiser Axius joystick docking. Who's in charge? You are.

With the Axius system you can control power and location with your fingertips. Need to go to the right? Push the joystick to the right. Hard and fast to the left? Push the joystick further to the left. With the Axius system the thrust is proportional to the amount of joystick movement – so the more you push the joystick in a particular direction, the more thrust is applied. All without the need of costly bow and stern thrusters. This proportional control makes docking easy and intuitive.



Simply twist the Axius joystick to turn to the boat around. Perfect for changing your direction in tight spaces.



Move the Axius joystick to the left, right or at any angle to move your boat precisely at your control.



Move the Axius joystick toward the bow or stern of the boat to move directly forward or backward.

Axius includes

Next Generation Power Steering

- Customizable steering response
- Self-centering and adjustable friction
- Mechanical tilt steering wheel

Digital Throttle & Shift (DTS)

- Selectable single lever control mode
- Docking mode – reduces maximum RPM in joystick mode to 50% of normal
- Smooth shifting
- Engine warm-up in throttle mode

360° Joystick Control

- Lateral boat movement without thrusters
- Proportional and directional thrust as needed
- Fully integrated with DTS, Next Generation Steering and SmartCraft® gauges



Axius PREMIER includes all Axius features plus:

VesselView®

- Digital display of engine and boat functions plus temperatures
- Touch Pad Cruise Control – holds selected cruise speed precisely
- Touch Pad Troll Control – reduces engine RPM for trolling or operating in no-wake zones

Axius CAN (Controller Area Network) Pad to operate:

- Auto Heading
- Waypoint Tracking (Auto pilot when used with a chart plotter)
- Skyhook
- Auto Yaw Control with integrated GPS and IMU (electronic compass) to maintain heading during lateral joystick manoeuvres and when in Auto Heading mode



Skyhook is a nautical station-keeping system, using throttle, shift and steering that holds a boat in place. Skyhook is useful to hold your boat at a fishing location, when you wait for a spot at a busy fuel dock or a drawbridge to open. It should not be used when swimmers or other boats are in the immediate area.



STERNDRIVE ENGINE

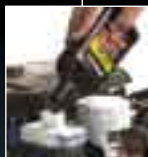
350 MAG • 377 MAG • 496 MAG • 496 MAG HO

MerCruiser MAG series engines ranging from 300 HP to 425 HP are known in the MerCruiser family as the smart performers – combining powerful, exciting performance with intelligent technologies that make owning a boat easy. Perfect for boats that need more torque and acceleration, MAG engines offer SmartCraft, optional Digital Throttle and Shift (DTS) which replaces the hesitation of mechanical cables with ultra-reliable, maintenance-free digital systems for smooth shifting and instant throttle response. MAG engines also come standard with Engine Guardian™ which watches over your engine and alerts you to potential problems.

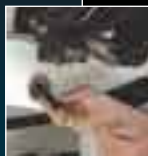
- Advanced computer controlled fuel and ignition systems ensure reliable starts and responsive performance
- Antifeedback power steering for nimble, responsive handling
- Engine mounted drive lube monitor makes it easy to check drive lube from inside the boat
- Available DTS with SmartTow makes water sports easier and more enjoyable



Easy Water Drain System



Remote Drive Lube Bottle



Easy Oil Drain System

MPI & TKS ENGINES

3.0 TKS • 3.0 MPI • 4.3 TKS • 4.3 MPI • 5.0 MPI

MerCruiser Multi-Point Injected (MPI) Sterndrive engines ranged from 135 HP to 260 HP

Every new petrol Multi-Point fuel Injected (MPI) comes complete with our performance-enhancing SmartCraft technology which monitors and fine-tunes your engine for maximum efficiency thanks to features such as Multi-Point Fuel Injection and Engine Guardian. The result is a powerful combination of protection and performance.

MerCruiser Turn-Key Starting (TKS) carburetted engines ranged from 135 HP to 190 HP

The MerCruiser TKS system utilizes a redesigned carburettor with an automatic fuel-enrichment system instead of a traditional choke. TKS produces instant, effortless starts at the turn of a key – even in cold weather. Turn-Key Starting is now standard on all carburetted engines.

ALPHA WATER DRAIN SYSTEM

This water drain system is easy to access and operate. It's available on all SmartCraft MPI models coupled to the Alpha® drive.

EASY-ACCESS DRIVE LUBE MONITOR

Easily accessed on all petrol sterndrive engines, the drive lubricant can be checked and refilled from inside the boat. Drive lube level is also electronically monitored through Engine Guardian or Audio Warning System.

EASY OIL DRAIN SYSTEMS

Changing your boat's engine oil has never been easier or faster. Our easy oil drain system is standard on all petrol sterndrive models.

POWER TRIM XD

Couples precise trim position with drive protection to cushion the drive unit during impact. A hydraulic memory system returns the drive to the previous trim position so you maintain steering control.

AUDIO WARNING SYSTEM

Our audio warning system warns you of low oil pressure, high engine temperature, excessive transmission temperature (inboards), and low drive lubricant (sterndrives). Standard on all petrol models.

SMOOTH AND PRECISE CONTROL

Simply put, the Digital Throttle & Shift (DTS) System brings digital precision to the shifting process by totally eliminating traditional cables. The system is available on the MerCruiser 5.0 MPI.



INBOARD ENGINES 300 HP – 420 HP

5.7 MPI • 6.2 MPI • 5.7 Horizon • 6.2 Horizon • 8.1 Horizon • 8.1 HO **HORIZON**

a powerful combination of protection and performance

The MerCruiser reputation for unsurpassed performance and reliability extends to our inboards which feature virtually maintenance-free Horizon™ engine technology plus 3 years of factory-backed product protection and a 3 year extended maintenance cycle.

But that's only the beginning of the good news. We offer inboards for a wide range of applications in power outputs ranging from 300 to 420 hp. And now all MPI inboard models come complete with SmartCraft technology which monitors and fine-tunes your engine for peak efficiency and performance through features such as our Multi-Point fuel Injection system, Engine Guardian and more. A powerful combination of protection and performance.

AIR-ACTUATED SINGLE-POINT WATER DRAIN

A hand-operated air pump drains the raw-water cooling circuit through two easily accessible valves located low on the engine. Standard or optional, depending on specific model.

ENGINE GUARDIAN

A standard feature on all MerCruiser MPI engines with SmartCraft technology, Engine Guardian works with the Audio Warning System to monitor and protect against engine, drive or transmission damage if monitored temperatures or pressures vary from the normal range.

MULTI-POINT FUEL INJECTION SYSTEM

The MPI system injects fuel into the intake port of each cylinder. This results in a precisely tuned and efficient engine offering exceptional acceleration, throttle response and dependable turnkey starting.

INBOARD ELECTRIC SHIFT TRANSMISSION

All inboard engines equipped with SmartCraft DTS feature the new electric shift transmission. The system delivers reliable shifts and exceptional durability via solenoid-controlled hydraulics to shift gears and pressure sensors that monitor clutch-pack performance for Transmission Guardian.



EMISSIONS CONTROL TECHNOLOGY

Our commitment to environmental conservation continues with the introduction of our Emissions Control (EC) technology, the new exhaust catalyst system from MerCruiser. Significantly reducing harmful exhaust emissions, these catalyzed engines offer full performance and improved fuel economy.



TOW SPORTS INBOARD ENGINES

Scorpion 377 • Scorpion 350 • Tow Sport 5.7 MPI

a **scorpion** stings,
everything else bites

Designed and built with one purpose: to deliver the most efficient pulling power with the right torque just when you need it – that's Scorpion™.

Scorpion is also smart. Fully compatible with SmartCraft technology to give you full control at the helm and over the water, we've got you covered with features like Engine Guardian for system monitoring and protection.

Features

Electronic throttle body for higher torque output and throttle response

Tunnel ram intake manifold like those found on dragsters for more power and thrust

Lower profile and centre of gravity

Simple maintenance features such as Easy Water and Oil Drain

Scorpion 377 comes with long-stroke forged-steel crankshaft

All Tow Sports engines come standard as SmartCraft ready. In addition all Scorpion engines have optional DTS, SmartTow and Catalysts.



EMISSIONS CONTROL TECHNOLOGY

Our commitment to environmental conservation continues with the introduction of our Emissions Control (EC) technology, the new exhaust catalyst system from MerCruiser. Significantly reducing harmful exhaust emissions, these catalyzed engines offer full performance and improved fuel economy.

MERCUISER STERNDRIVES

handle boats with **authority**

Boaters are always looking for more power, more options, more durability which is why MerCruiser produces the widest range of drives in the business. We cover every application imaginable and whether you choose Alpha or Bravo drives with their smooth, quiet shifting or the durable Bravo X Series, you're assured of peak performance and maximum durability.



ALPHA ONE®

The Alpha drive delivers reliable performance in a value package. Reliability: Spiral-cut steel bevel gears for quiet operation and extended durability + XK-360 low-copper aluminium alloy for corrosion resistance. Performance: 3, 4 or 5 blade propellers available for pulling power or top-speed applications. Easy ownership: Permalube® U-joints eliminate the need for periodic lubrication.



BRAVO ONE®

The Bravo One drive delivers superior performance with best-in-class shifting. Reliability: precision-shimmed forged steel gears for smooth quiet operation and durability. Performance: trim-limit switch sets drive angle for maximum performance every time. Easy ownership: greaseable Drive Coupler allows for service without removing the drive unit.



BRAVO TWO®

The Bravo Two drive delivers high thrust around the dock, early planing and improved fuel economy. Reliability: tri-paint system for a tough, durable corrosion-resistant barrier. Performance: large Bravo Two 20-inch propellers provide maximum lift and thrust for large boats. Easy ownership: maintenance-free hinge pins allow for service without pulling the boat from the water.



BRAVO THREE®

The Bravo Three drive is the leader in twin, counter-rotating propeller stern drives, designed for rail-like stability through turns as well as faster acceleration. Reliability: largest available propshaft offered with twin-prop design. Performance: Bravo Three twin props and large rudder area allow for better handling with single-engine boats. Easy ownership: greaseable Gimbal Bearing allows for service without removing the drive unit.



BRAVO X®

Designed specially for big block 8.1-litre high-output engines, this is a super strength drive with high performance attributes.



BRAVO XR®

Direct from the Factory Class winners' circle and available for your boat, the XR Drives are all about performance and being first to the chequered flag.

PETROL ENGINE

		SmartCraft
STERNDRIVES	Axius SeaCore 496 MAG HO	Yes
	Axius SeaCore 496 MAG	Yes
	Axius SeaCore 377 MAG	Yes
	Axius SeaCore 350 MAG	Yes
	Axius SeaCore 5.0	Yes
	Axius 496 MAG HO	Yes
	Axius 496 MAG	Yes
	Axius 377 MAG	Yes
	Axius 350 MAG	Yes
	Axius 5.0	Yes
	SeaCore 496 MAG HO	Yes
	SeaCore 496 MAG	Yes
	SeaCore 377 MAG	Yes
	SeaCore 350 MAG	Yes
	SeaCore 5.0	Yes
	SeaCore 4.3	Yes
	496 MAG HO	Yes
	496 MAG	Yes
	377 MAG	Yes
	350 MAG	Yes
5.0 MPI	Yes	
4.3 MPI	Yes	
3.0 MPI	Kit	
4.3 TKS	No	
3.0 TKS	No	
Vazer 100	Kit	
INBOARDS	8.1 HO	Yes
	8.1 Horizon	Yes
	6.2 Horizon	Yes
	5.7 Horizon	Yes
	6.2 MPI	Yes
5.7 MPI	Yes	
TOW SPORTS INBOARDS	Scorpion 377	Yes
	Scorpion 350	Yes
	Tow Sport 5.7 MPI	Yes

SPECIFICATIONS

Horsepower	RPM Range	Displacement Liter/CID	Cylinders	Fuel System	Digital Throttle & Shift Option	Closed-Cooling	Water Drain System*		Drive/Transmission Options	Total Weight (kg)
							Alpha	Bravo/Inboard		
425 hp (317 kW)	4600–5000	8.1/496	V8	MPI	Standard	Standard	N/A	Standard	Bravo One X, XR – Bravo Two X Bravo Three X, XR	N/A – N/A 586
375 hp (280 kW)	4400–4800	8.1/496	V8	MPI	Standard	Standard	N/A	Standard	Bravo One, X, XR – Bravo Two X Bravo Three X, XR	N/A – N/A 586
320 hp (239 kW)	4800–5200	6.2/377	V8	MPI	Standard	Standard	N/A	Optional	Bravo One, X, XR – Bravo Two X Bravo Three X, XR	N/A – N/A 516
300 hp (224 kW)	4800–5200	5.7/350	V8	MPI	Standard	Standard	Standard	Optional	Bravo One, X, XR – Bravo Two X Bravo Three X, XR	N/A – N/A 516
260 hp (194 kW)	4600–5000	5.0/305	V8	MPI	Standard	Standard	Standard	Optional	Bravo One, X, XR – Bravo Two X Bravo Three X, XR	N/A – N/A 516
425 hp (317 kW)	4600–5000	8.1/496	V8	MPI	Standard	Standard	N/A	Standard	Bravo One X, XR – Bravo Two X Bravo Three X, XR	544 – 551 556
375 hp (280 kW)	4400–4800	8.1/496	V8	MPI	Standard	Standard	N/A	Standard	Bravo One, X, XR – Bravo Two X Bravo Three X, XR	544 – 551 556
320 hp (239 kW)	4800–5200	6.2/377	V8	MPI	Standard	Kit	N/A	Optional	Bravo One, X, XR – Bravo Two X Bravo Three X, XR	475 – 482 486
300 hp (224 kW)	4800–5200	5.7/350	V8	MPI	Standard	Kit	Standard	Optional	Bravo One, X, XR – Bravo Two X Bravo Three X, XR	475 – 482 486
260 hp (194 kW)	4600–5000	5.0/305	V8	MPI	Standard	Optional or Kit	Standard	Optional	Bravo One, X, XR – Bravo Two X Bravo Three X, XR	433 – 451 486
425 hp (317 kW)	4600–5000	8.1/496	V8	MPI	Yes	Standard	N/A	Standard	Bravo One X, XR – Bravo Two X Bravo Three X, XR	544 – 551 556
375 hp (280 kW)	4400–4800	8.1/496	V8	MPI	Yes	Standard	N/A	Standard	Bravo One, X, XR – Bravo Two X Bravo Three X, XR	544 – 551 556
320 hp (239 kW)	4800–5200	6.2/377	V8	MPI	Yes	Standard	N/A	Standard	Bravo One, X, XR – Bravo Two X Bravo Three X, XR	475 – 482 486
300 hp (224 kW)	4800–5200	5.7/350	V8	MPI	Yes	Standard	N/A	Standard	Bravo One, X, XR – Bravo Two X Bravo Three X, XR	475 – 482 486
260 hp (194 kW)	4600–5000	5.0/305	V8	MPI	Yes	Standard	N/A	Standard	Bravo One, X, XR – Bravo Two X Bravo Three X, XR	451 – 459 463
220 hp (164 kW)	4400–4800	4.3/262	V6	MPI	Yes	Standard	N/A	Standard	Bravo One, X, XR – Bravo Two X Bravo Three X, XR	N/A – 414 419
425 hp (317 kW)	4600–5000	8.1/496	V8	MPI	Yes	Standard	N/A	Standard	Bravo One X, XR – Bravo Two X Bravo Three X, XR	544 – 551 556
375 hp (280 kW)	4400–4800	8.1/496	V8	MPI	Yes	Standard	N/A	Standard	Bravo One, X, XR – Bravo Two X Bravo Three X, XR	544 – 551 556
320 hp (239 kW)	4800–5200	6.2/377	V8	MPI	Yes	Kit	N/A	Optional	Bravo One – Bravo Two Bravo Three	451 – 459 463
300 hp (224 kW)	4800–5200	5.7/350	V8	MPI	Yes	Kit	Standard	Optional	Alpha – Bravo One Bravo Two – Bravo Three	430 – 449 456 – 460
260 hp (194 kW)	4600–5000	5.0/305	V8	MPI	Yes	Optional or Kit	Standard	Optional	Alpha – Bravo One Bravo Two – Bravo Three	433 – 451 459 – 463
220 hp (164 kW)	4400–4800	4.3/262	V6	MPI	No	Optional or Kit	Standard	Optional	Alpha – Bravo Two Bravo Three	393 – 414 419
135 hp (101 kW)	4400–4800	3.0/181	Inline-4	MPI	No	Optional or Kit	Standard	N/A	Alpha	288
190 hp (142 kW)	4400–4800	4.3/262	V6	TKS Carb	No	Optional or Kit	N/A	N/A	Alpha – Bravo Two Bravo Three	385 – 405 410
135 hp (101 kW)	4400–4800	3.0/181	Inline-4	TKS Carb	No	Optional or Kit	Standard	N/A	Alpha	288
100 hp (74.7 kW)	5600–6000	1.6/98	Canted I-4	MPI	No	Standard	Self-Draining		Vazer	260
420 hp (313 kW)	4400–4800	8.1/496	V8	MPI	Yes	Standard	N/A	Standard	ZF/Velvet	513
370 hp (276 kW)	4200–4600	8.1/496	V8	MPI	Yes	Standard	N/A	Standard	ZF/Velvet	513
320 hp (239 kW)	4600–5000	6.2/377	V8	MPI	Yes	Standard	N/A	Standard	ZF/Velvet	431
300 hp (224 kW)	4600–5000	5.7/350	V8	MPI	Yes	Standard	N/A	Standard	ZF/Velvet	431
320 hp (239 kW)	4600–5000	6.2/377	V8	MPI	Yes	Optional	N/A	Optional	ZF/Velvet	390
300 hp (224 kW)	4600–5000	5.7/350	V8	MPI	Yes	Optional	N/A	Optional	ZF/Velvet	390
340 hp (254 kW)	4800–6000	6.2/377	V8	MPI	Yes	N/A	N/A	Optional	ZF/Velvet	373
330 hp (246 kW)	4800–5200	5.7/350	V8	MPI	Yes	N/A	N/A	Optional	ZF/Velvet	373
315 hp (235 kW)	4600–5000	5.7/350	V8	MPI	No	N/A	N/A	Optional	ZF/Velvet	369

- General Notes**
- Approximate engine and drive weights. Individual units may vary slightly.
 - Option availability determined by boat manufacturer within its boat model offerings.
 - Performance obtained and corrected in accordance with SAE J1228 crankshaft power.
 - All models and specifications are subject to change without notice or without incurring obligations to modify previously manufactured products.

* MerCruiser offers a variety of easy water drain strategies depending upon application, design and in some cases by boat model. The Alpha drain systems typically involve turning a handle or removing quick-connect hoses to drain. The Bravo/Inboard water drain systems are also found on most closed-cooled models and are actuated by pressurized air. Some OEM customers request these systems be removed.

SeaCore System

Axius System

Emissions Control model available

MAG

MPI

TKS

Vazer

Scorpion

Horizon

take **good care** of your engine

When you've made an investment in a beautifully engineered Mercury MerCruiser engine, it makes sense to keep it that way and protect your warranty by only using genuine Quicksilver parts, accessories and maintenance products. Quicksilver is the most respected name in the marine after-market, world-wide, because all of its products are specifically developed for the marine environment.
Demand your dealer uses only Quicksilver products!

before the boating season >> pre-season preparations

The pre-season time is the most exciting time of the year. Boats are taken out of the garage and you start preparing your boat for the next summer. Quicksilver offers a complete range of products to prepare your engine and boat to be in perfect shape for a season full of boating excitement.

during the boating season

You want to try something new?

Visit your Mercury MerCruiser dealer and discover Quicksilver's wide range of water sports accessories.

after the boating season >> winterizing

After a season full of boating fun, your engine needs a winter break. Autumn is the perfect time to prepare your boat and engine for winter storage. Quicksilver offers the broadest range of winterizing products to keep your boat and engine in perfect shape during winter time. Visit your dealer and go to www.quicksilverwinterization.com to learn about our winterizing promotion campaigns.

MERCURY
MerCruiser.

 **BRUNSWICK**
GENUINE INGENUITY

© 2008 Brunswick Marine in EMEA. All Rights Reserved.

Brunswick Marine in EMEA continuously explores means to improve the products it designs, manufactures and distributes. Every effort is made to produce sales and service literature which is current. Changes to specifications of engines, boats and accessories are ongoing. This brochure should not be regarded as a precise guide to the latest specifications. This brochure is also not an offer for sales of any particular engine, boat or accessory. Distributors and dealers are not agents of Brunswick Marine in EMEA or one of its affiliates and they have no authority to bind Brunswick Marine in EMEA by any express undertaking or representation, including but not limited to representations of product, sales, applications or service nature. Not all products are available in all countries and some are available only in limited quantities. Some products shown in this catalogue are equipped with optional accessories. Please see your local dealer.
Visit <http://www.BrunswickMarineEMEA.com>

 Quality

BRUNSWICK MARINE in EMEA
ISO 9001 - 2000 CERTIFIED

The quality system of
Brunswick Marine in EMEA
is ISO 9001:2000 certified

GB - Printed in Belgium. Part # 90-813397-09