

Tender – Sport – Professional



Based in the north of Portugal, near the Spanish border, VALIANT is one of the largest European manufactures of semi-rigid craft. In 2003, the powerful BRUNSWICK Group, the world leader in motorboats, decided to extend its sales to the general public and acquired the VALIANT company. With 20 000 people working in 130 different countries, BRUNSWICK owns famous marques including SEALINE, MAXUM, BAYLINER, SEA RAY, HATTERAS, CABO, BOSTON WHALER, QUICKSILVER and also the MERCURY, MARINER and MERCUISER marine engines.



Valiant is part of Brunswick Corporation, world leading manufacturer of boat engines and recreational craft. Sister brands of the group Brunswick Marine include.

QUICKSILVER

Sea Ray

BAYLINER

MAXUM

TROPHY
SPORTFISHING
BOATS

**BOSTON
WHALER**

MERCURY

SEALINE
CRUISING TO PERFECTION

Why choose a semi-rigid? Its advantages include :

Comfort: The tube acts as a permanent buffer in the waves. The crew will tire less in heavy seas.

Stability: On an inflatable, the centre of gravity is lower than on a fibreglass hull. When stationary, the semi-rigid craft rolls less, thanks to its tube. It therefore feels safer to passengers.

Safety: With between 3 and 8 separate inflated chambers, and sometimes more, the tube will retain its form without altering the boat's performance even if one chamber is damaged. Even in the event of significant damage to the hull, the tube alone is capable of ensuring the buoyancy of the craft and consequently of the people on board.

Ecology: The lightness of a semi-rigid craft means that a less powerful engine is needed for the same performance than on a fibreglass boat. That means less investment, lower maintenance costs, lower consumption and considerably reduced pollution.

Occupancy: For identical dimensions, a semi-rigid craft will carry a larger number of persons. A 5,5 m semi-rigid could take 8 to 10 people compared with only 5 or 6 in a fibreglass boat.

Lightness: The low weight of a semi-rigid craft makes it easy to transport using the great majority of vehicles on the market.

What fabric is most suitable for your purposes ?

PVC for sports use : DYNAMIC, VANGUARD and DR series

The PVC which we use was specially developed for the VALIANT by the German group MEHLER Technologies. Using a high tenacity 1100 Decitex fabric with very high quality coating produces a PVC which is extremely resistant to UV rays.

PU for professional use : DR series

This revolutionary high tenacity fabric (1870 Decitex) was developed more than ten years ago and was specially designed for VALIANT professional craft. As well as the fact that it can be thermo-welded like PVC, it also has five times more resistance to abrasion than Neoprene/Hypalon. This Fabric has received SOLAS certification issued by LLOYD'S REGISTER no ASS030012.



What are the advantages of VALIANT ?

Extensive experience in semi-rigid craft

With more than 15 years' experience in manufacturing semi-rigid professional boats, VALIANT has improved its construction techniques for both hulls and tubes down the years. After acquisition by the world's leading motorboat group Brunswick, VALIANT improved still further, benefiting from the technological support of the group's other production sites.

A high quality thermo-welding technique

VALIANT makes exclusive use of the technique of THERMO WELDING when assembling the PVC or Polyurethane fabric of its tubes. This process combines fusion with high pressure bonding of double internal/external tapes, and is used to assemble the different parts of the tubes with welds stronger than the material itself.



A high-tech lamination process

Derived from technology developed in the aeronautical industry, the semi-rigid Valiant craft use very advanced vacuum and injection moulding achieving an excellent weight/rigidity/reliability ratio.



Tested under extreme conditions

All new models are severely tested in the Atlantic Ocean, taking advantage of the sometimes extreme conditions found along the Portuguese and Spanish coasts.

VALIANT : guarantees and certification

In 2001, VALIANT received ISO 9001:2000 certification for the design, manufacture and repair of semi-rigid craft.

Built to last

Each VALIANT model has been carefully designed to guarantee optimum performance. Our highly qualified technical staff rely on the most up to date CAD/CAM technologies at every stage in project design, planning and development.

The VALIANT manufacturing process has been established with the aim of producing boats of a high and uniform standard. That's why we offer **one of the best guarantees in the inflatable market**: five years on assembly joints, 5 years on HAKU® fabric and 10 years on AKRON® fabric.

Some models in the VALIANT professional range have received SOLAS certification. This certification is proof of industrial quality, with exceptionally high standards for design, reliability and safety.



VANGUARD

V 64	p. 4-5
750 CRUISER	p. 6-7
620 CRUISER	p. 8-9
750 SPORT	p. 10-11
620 SPORT	p. 12-13
570 - 520 SPORT	p. 14-15
450 - 400 SPORT	p. 16-17

DR

750 - 620	p. 18-19
570 - 520	p. 20-21
490 - 450 - 400	p. 22-23

DYNAMIC

300 - 270 - 240 TENDER	p. 24-25
380 - 340 - 300 OPEN	p. 24-25

Accessories p. 26-29

Technical data p. 30

Equipments & options p. 31



VANGUARD V 64**Main characteristics**

	TDI	Vazer	MPI
<i>CE Category</i>	C	C	C
<i>Length overall</i>	6,42 m	6,42 m	6,42 m
<i>Beam overall</i>	2,51 m	2,51 m	2,51 m
<i>Max. capacity persons</i>	10	10	10
<i>Max. engine</i>	150 cv	100 cv	135 cv
<i>Cylinder</i>	2.0 L	1.6 L	3.0 L
<i>Fuel type</i>	Diesel	Petrol	Petrol
<i>Total boat weight (with engine)</i>	1085 kg	956 kg	1085 kg
<i>Fuel tank</i>	106 L	106 L	106 L

NEW FOR 2009

Stern platform with telescopic bathing ladder (standard)



Northstar 657 combined sounder/GPS (standard)



Folding stern seat (doubles the surface of the sundeck in horizontal position)

**VANGUARD
V 64**

New design and comfortable steering wheel (standard)



Bow sundeck (standard)



Large bow locker under the bow sundeck (standard)



New console S-6 without front seat (standard)

**Standard equipment & accessories**

- › Stern platform with telescopic bathing ladder
- › Bow sundeck
- › Stern seat for 3 people with back transformable into sundeck
- › Adjustable seats with modular backrests
- › New console S-6 with hydraulic steering
- › Front sundeck
- › Stainless steel frame with navigation lights and GPS antenna
- › Automatic bilge pump

Optional equipment & accessories

- › Bimini sunshade
- › Electrical deck shower

Products may differ from those shown

VANGUARD 750 Cruiser

Main characteristics

CE Category	C
Length overall	7,49 m
Beam overall	2,85 m
Max. capacity persons	22
Max. engine	300 cv
Total boat weight (Exc. engine)	1170 kg
Fuel tank	300 L

Standard equipment & accessories

- › Center console S-7 with hydraulic steering
- › GRP navigation frame with lights
- › Fibreglass anchor bracket with stainless steel bow roller (retractable)
- › Northstar 657 combined sounder/GPS
- › Electric panel with 6 switches and socket (12V)
- › Electrical shower with tank 40 litres
- › Automatic bilge pump
- › Bathing platform with stainless steel ladder S-7
- › Ice chest marine with tie down kit
- › Ice chest tie down kit
- › Integral fuel tank 300 L
- › Internal/external lifelines
- › Leaning Post S-7D with locker
- › Non-slip deck with teak laminate
- › Pressure relief valves
- › Stainless steel ski mast
- › Stern mooring cleats (retractable)
- › Sundeck cushions with transport bag

Optional equipment & accessories

- › Electric windlass with anchor
- › Bimini sunshade
- › Boat cover
- › Front cockpit table

Leaning Post S-7D with locker (extinguisher not included)



Front removable table on stainless steel foot (optional)



Ice chest marine with tie down kit (standard)



Set of two front side lockers (standard)



VANGUARD 750 Cruiser

Dashboard with Northstar 657 combined sounder/GPS (standard)



Electric windlass with anchor (optional)



Center Console S-7 with locker under the seat (standard)



Electrical shower with tank 40 litres (standard)

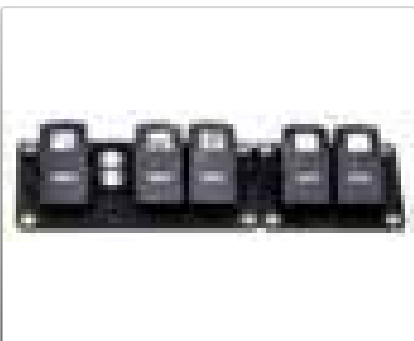


Products may differ from those shown





Electrical switches (standard)



Stainless steel ski mast (standard)



Fibreglass anchor bracket with stainless steel bow roller (standard)



Set of two front side lockers (standard)



VANGUARD 620 Cruiser

Bathing platform with stainless steel ladder S-5 (standard)



Bimini sunshade



Center console S-6 with locker under the seat (standard)



Electrical shower with tank 40 litres (standard)



VANGUARD 620 Cruiser

Main characteristics

CE Category	C
Length overall	6,15 m
Beam overall	2,50 m
Max. capacity persons	17
Max. engine	150 cv
Total boat weight (Exc. engine)	618 kg
Fuel tank	106 L

Standard equipment & accessories

- › Center console S-6 with hydraulic steering
- › Bathing platform with stainless steel ladder S-5
- › Fibreglass anchor bracket with stainless steel bow roller
- › Electric panel with 6 switches and socket
- › Electrical shower with tank 40 litres
- › Automatic bilge pump
- › GRP navigation frame with lights
- › Integral fuel tank 106 L
- › Non-slip deck with teak laminate
- › Internal/external lifelines
- › Pressure relief valves
- › Stainless steel ski mast
- › Stern mooring cleat (retractable)
- › Folding backrest seat S-6

Optional equipment & accessories

- › Northstar 657 combined sounder/GPS
- › Bimini sunshade
- › Mooring cover

Products may differ from those shown

VANGUARD 750 Sport

Main characteristics

CE Category	C
Length overall	7,49 m
Beam overall	2,85 m
Max. capacity persons	22
Max. engine	300 cv
Total boat weight (Exc. engine)	1065 kg
Fuel tank	300 L

Standard equipment & accessories

- › Console S-7 with hydraulic steering
- › Bow cleat
- › Electric panel with 6 switches
- › Automatic bilge pump
- › Integral fuel tank 300 L
- › Internal/external lifelines
- › Non-slip deck with teak laminate
- › Pressure relief valves
- › Leaning Post S-7D

Optional equipment & accessories

- › Northstar 657 combined sounder/GPS
- › Bimini sunshade
- › Stainless steel ski mast
- › Bathing platform with stainless steel ladder S-7
- › Mooring cover
- › Fibreglass anchor bracket with stainless steel bow roller
- › Electrical shower with tank 40 litres
- › Ice chest marine with tie down kit
- › Stainless steel navigation frame S-7 with lights
- › Stainless steel ski mast
- › Front side lockers for sundeck
- › Sundeck cushions with storage bag (front side locker option required)

Products may differ from those shown

Fibreglass anchor bracket with stainless steel bow roller (standard)



Front side lockers for sundeck (mandatory option for sundeck cushions)



Stainless steel navigation frame S-7 with lights (option)



Sundeck with front side lockers (optional)



VANGUARD
750 Sport

Bathing platform with stainless steel ladder S-7 (optional)



Ice chest marine with tie down kit (standard)



Center console S-7 with locker under the seat (standard)



Dashboard with Northstar 657 combined sounder/GPS (optional)







Stern seat, 3 persons (standard)



Leaning Post stainless steel, 2 persons (standard)



Pressure relief valves (standard)



Large storage locker for mooring (standard)



VANGUARD 620 Sport

Dashboard with electronic instrumentation (optional)



Stainless steel ski mast (optional)



New console S-6 without front seat (standard)



Stainless steel navigation frame S-6 with lights (optional)



VANGUARD 620 Sport

Main characteristics

CE Category	C
Length overall	6,15 m
Beam overall	2,50 m
Max. capacity persons	17
Max. engine	150 cv
Total boat weight (Exc. engine)	504 kg
Fuel tank	106 L

Standard equipment & accessories

- › Center console S-6 with hydraulic steering
- › Bow cleat
- › Leaning Post stainless steel, two persons
- › Seat with locker S-6
- › Electric panel with 6 switches
- › Automatic bilge pump
- › Integral fuel tank 106 L
- › Internal/external lifelines
- › Non-slip deck with teak laminate
- › Pressure relief valves

Optional equipment & accessories

- › Northstar 657 combined sounder/GPS
- › Bimini sunshade
- › Bathing platform with stainless steel ladder S-5
- › Boat cover
- › Fibreglass anchor bracket with stainless steel bow roller
- › Electrical shower with tank 40 litres
- › Ice chest marine with tie down kit
- › Stainless steel navigation frame S-6 with lights
- › Stainless steel ski mast

Products may differ from those shown

VANGUARD 570 & 520 Sport

Main characteristics

	570	520
CE Category	C	C
Length overall	5,65 m	5,20 m
Beam overall	2,40 m	2,18 m
Max. capacity persons	15	9
Max. engine	135 cv	100 cv
Total boat weight (Exc. engine)	446 kg	320 kg
Fuel tank	106 L	73 L

Standard equipment & accessories

- › Center console S-5 (with mechanical steering system on the V520 Limited and with hydraulic system on the V520 Sport)
- › Center console S-6 with hydraulic steering (V570 Sport)
- › Electric panel with 3 switches
- › Automatic bilge pump
- › Seat with locker S-5 (V520 Limited)
- › Seat with locker S-6 (V570 Sport)
- › Integral fuel tank (73 L on V520 and 106 L on V570)
- › Internal/external lifelines
- › Non-slip deck with teak laminate
- › Bathing platform with stainless steel ladder S-5 (V520 & V570 Sport)
- › Pressure relief valves (except V520 Limited)

Optional equipment & accessories

- › Northstar 657 combined sounder/GPS
- › Bimini sunshade
- › Boat cover
- › Bathing ladder S-4 (on 520 Limited)
- › Bathing platform with stainless steel ladder S-5 (on 520 Limited)
- › Ice chest marine
- › Cushions for ice chest marine
- › Ice chest tie down kit
- › Stainless steel navigation frame S-5 with lights
- › Sundek with transport bag

Products may differ from those shown

V 570 Sport



V 520 Sport



Console S-6 Comfort on 570 Sport (standard)



Console S-5 on 520 Sport & 520 Limited (standard)



Change to Sundek cushions (optional)









V 450 Sport

V 400 Sport

VANGUARD 450 & 400 Sport

Main characteristics

	450	400
CE Category	C	C
Length overall	4,50 m	4,00 m
Beam overall	1,94 m	1,77 m
Max. capacity persons	7	6
Max. engine	60 cv	40 cv
Total boat weight (Exc. engine)	205 kg	202 kg

Standard equipment & accessories

- › Center console S-4 with cable steering system
- › Seat with locker S-4
- › Bow cleat
- › Bow locker
- › Foam-filled hull
- › Internal/external lifelines
- › Non-slip deck

Optional equipment & accessories

- › Boat cover
- › Bathing ladder S-4
- › Ice chest
- › Ice chest tie down kit
- › Stainless steel navigation frame S-4 with lights
- › Sundek (with supports) for V450

Center console S-4 (standard)



Seat with locker S-4 (standard)



Bow locker (standard)



Products may differ from those shown

DR 750 & 620

Main characteristics

	750	620
CE Category	C	C
Length overall	7,49 m	6,15 m
Beam overall	2,8 m	2,50 m
Max. capacity persons	22	17
Max. engine	300 cv	150 cv
Poids total (nu et sans moteur)	773 kg	486 kg
Fuel tank	300 L	106 L

Standard equipment & accessories

- › Integral tank of 106 L (DR 620) and 300 L (DR 750)
- › Automatic bilge pump
- › Aluminium hatch (except DR 620)
- › Bow cleat
- › Double rubbing strake
- › Internal/external lifelines
- › Lifting handles
- › Tube reinforcements
- › Pressure relief valves
- › Stern lifting/towing points

Optional equipment & accessories

- › Stainless steel PT-7D backrest seat or PT-7M single person
- › Leaning Post fibreglass S-7D (except DR 620)
- › Double modular seat
- › Single modular seat
- › Dive bottle rack (4, 6, 8, 10 or 12 bottles)
- › Stainless steel SAMSON bow post
- › Fibreglass anchor bracket with stainless steel bow roller
- › Rubber bow roller
- › Center console PT-5 (except DR 750)
- › Center console PT-6
- › Center console PT-7 (except DR 620)
- › Double Jockey console S-7
- › Hydraulic steering
- › Bathing platform with stainless steel ladder S-5 (DR 620)
- › Bathing platform with stainless steel ladder S-7 (DR 750)
- › Diving ladder with platform, stainless steel navigation frame and navigation lights
- › Stainless steel navigation frame S-6/7 with lights
- › PVC keel protection

Products may differ from those shown

DR 750



DR 620



Platform with diving ladder and S-7 navigation frame with navigation lights (optional)



Dive bottle rack (4,6,8,10,12) (optional)



Backrest seat PT-7D, two persons (on 750) (optional)







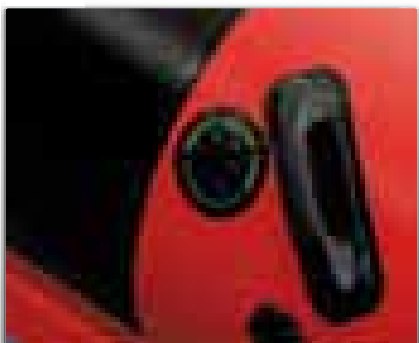
DR 570



DR 520



Reinforced tube, safety valves and internal handle (standard)



Center console PT-5 (option)



Leaning Post S-6D, two persons, black harness (optional)



DR 570 & 520

Main characteristics

	570	520
CE Category	C	C
Length overall	5,65 m	5,20 m
Beam overall	2,40 m	2,18 m
Max. capacity persons	15	9
Max. engine	135 cv	100 cv
Total boat weight (Exc. engine)	375 kg	262 kg
Fuel tank	106 L	73 L

Standard equipment & accessories

- › Integrated tank of 73 L (DR 520) and 106 L (DR 570)
- › Tube reinforcements
- › Bow cleat
- › Lifting handles
- › Towing ring/ front anchoring
- › Non-slip deck
- › Automatic bilge pump
- › Pressure relief valves
- › Internal/external lifelines
- › Rubbing strake (double)
- › Stern lifting/towing points

Optional equipment & accessories

- › Single person backrest PT-7M, folding
- › Dive bottle rack (4 or 6 bottles)
- › Leaning Post S-6D
- › Reinforcing bands (diver)
- › Seat with locker S-5 (on DR 520)
- › Reinforced lifting points bow/stern
- › Seat with locker S-6 (on DR 570)
- › Rubber bow roller
- › Single modular seat
- › Coloured hull
- › Bathing ladder S-4
- › Center console PT-5
- › Bathing platform with stainless steel ladder S-5
- › Center console PT-6 (except DR 520)
- › Jockey console S-5

Products may differ from those shown

DR 490 & 450 & 400

Main characteristics

	490	450	400
CE Category	C	C	C
Length overall	4,90 m	4,50 m	4,00 m
Beam overall	1,94 m	1,94 m	1,77 m
Max. capacity persons	8	7	6
Max. engine	80 cv	60 cv	40 cv
Total boat weight (Exc. engine)	185 kg	157 kg	154 kg

Standard equipment & accessories

- › Bow cleat
- › Bow locker
- › Towing ring/ front anchoring
- › Foam-filled hull
- › Internal/external lifelines
- › Lifting handles
- › Non-slip deck
- › Tube reinforcements
- › Telescopic paddles
- › Pressure relief valves
- › Reinforced rubbing strake
- › Stern lifting/towing points

Optional equipment & accessories

- › Bathing ladder S-4
- › Rubber bow roller
- › Reinforced lifting points bow/stern
- › Boat cover
- › Coloured hull
- › Double Jockey console S-5
- › Stainless steel navigation frame S-4 with lights
- › PVC keel protection

Products may differ from those shown



DR 400



DR 450



DR 490

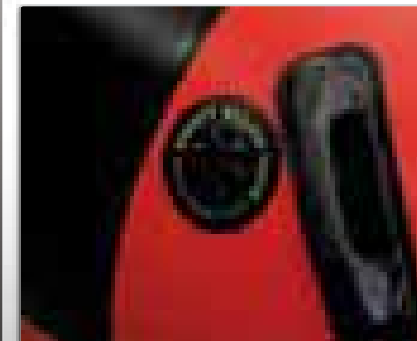
Jockey seat with place for 24 litres spare fuel can (optional)



Bow locker (standard)



Pressure relief valves (standard)







Dynamic Tender (300 - 270 - 240)



Dynamic Open (380 - 340 - 300)

Family Pack (optional): Center console S-3 + seat S-3, on OPEN model only



Sport Pack (optional): Jockey S-3, console on model OPEN only



Automatic drainage system (standard)



DYNAMIC Tender

Main characteristics

	300	270	240
CE Category	C	D	-
Length overall	3,00 m	2,70 m	2,40 m
Beam overall	1,64 m	1,40 m	1,40 m
Max. capacity persons	4	4	3
Max. engine	9,9 cv	6 cv	6 cv
Total boat weight (Exc. engine)	56 kg	45 kg	41 kg

DYNAMIC Open

	380	340	300
CE Category	C	C	C
Length overall	3,80 m	3,40 m	3,00 m
Beam overall	1,64 m	1,64 m	1,64 m
Max. capacity persons	4	4	5
Max. engine	25 cv	20 cv	9,9 cv
Total boat weight (Exc. engine)	87 kg	75 kg	44 kg

Standard equipment & accessories

- › Fibreglass seat (on Tender 240 / 270 / 300)
- › Bow lifting handle
- › Stern lifting handle
- › Stern lifting/towing points
- › Towing ring
- › Automatic drainage system
- › External lifelines
- › Non-slip deck (on Tender 240 / 270 / 300)
- › Non-slip deck with teak laminate (on Open 300 / 340 / 380)
- › Telescopic paddles (on Open 300 / 340 / 380)
- › Aluminium oars (on Tender 240 / 270 / 300)
- › Fuel tank tie down strap (on Open 300 / 340 / 380)

Optional equipment & accessories

- › Boat cover (all models)
- › Fuel tank tie down strap (on Tender 240 / 270 / 300)
- › Pack Family on model Open only
 - Center console S-3
 - Seat with locker S-3
- › Pack Sport on model Open only
 - Jockey console S-3

Products may differ from those shown

Accessories

Jockey console S-3 with steering wheel (single)
Dim. (cm) : L: 106 x w: 39 x h: 55



Double Jockey console S-5 with steering wheel (DR range)
Dim. (cm) : L: 125 x w: 54 x h: 105



Double Jockey console S-7 with steering wheel (DR range)
Dim. (cm) : L: 155 x w: 62 x h: 114



Center console S-3
Dim. (cm) : L: 33 x w: 38 x h: 75



Center console S-4
Dim. (cm) : L: 43 x w: 46,5 x h: 102



Center console S-5
Dim. (cm) : L: 54 x w: 70 x h: 121



Center console S-6
Dim. (cm) : L: 67 x w: 95 x h: 157



Center console S-6 Comfort
Dim. (cm) : L: 108 x w: 95 x h: 157



Center console S-7
Dim. (cm) : L: 83 x w: 112 x h: 150



Center console PT-5 (DR range)
Dim. (cm) : L: 42 x w: 46 x h: 112



Center console PT-6 (DR range)
Dim. (cm) : L: 43 x w: 77 x h: 151



Center console PT-7 (DR range)
Dim. (cm) : L: 78 x w: 100 x h: 154



Seat with locker S-3
Dim. (cm) : L: 52 x w: 72 x h: 68



Seat with locker S-4
Dim. (cm) : L: 57 x w: 85 x h: 68



Seat with locker S-5
Dim. (cm) : L: 45 x w: 106 x h: 77



Lots of ideas for customising your Valiant !

Seat with locker S-6
Dim. (cm) : L: 52 x w: 125 x h: 86



Leaning Post S-7D
Dim. (cm) : L: 54 x w: 108 x h: 105



Leaning Post S-6D
Dim. (cm) : L: 90 x w: 53 x h: 100



Backrest PT-6D without seat
(two persons)
Dim. (cm) : L: 104 x w: 42 x h: 104



Backrest PT-7D with folding seats
(two persons)
Dim. (cm) : L: 42 x w: 104 x h: 105



Backrest PT-7M with folding seat
(one person)
Dim. (cm) : L: 44 x w: 54 x h: 100



Double modular seat
Dim. (cm) : L: 115 x w: 32 x h: 110



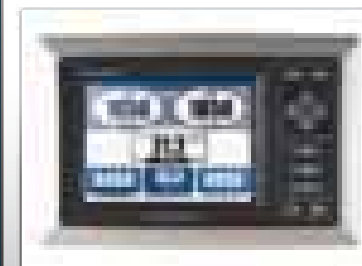
Single modular seat
Dim. (cm) : L: 59 x w: 32 x h: 81



Northstar 657 combined
sounder/GPS



Vessel View
(for Verado® engine only)



Removable
stainless steel
ski mast



Folding navigation frame S-4 with
navigation lights



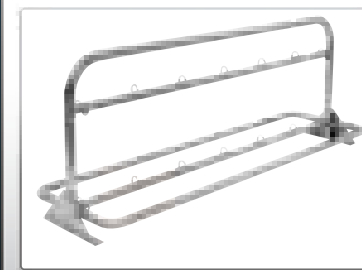
Folding navigation frame S-5/6/7
with navigation lights



Navigation
frame
+ platform
+ diving ladder



Dive bottle rack (4,6,8,10)



Accessories

Aluminium hatch
(different dimensions)



ABS hatch (different dimensions)



Glove box in ABS, for mounting
(optional)



Electrical panel switches
(depending on model)



Hydraulic steering (optional)



Electric windlass with anchor
(on 750 Cruiser only)



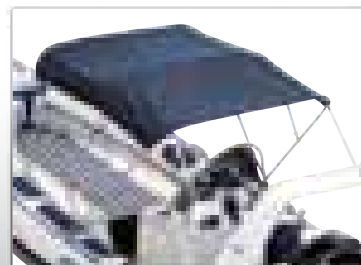
Retractable bow roller



Rubber bow roller (grey or black)



Bimini sunshade
(various models available)



Stainless steel bow SAMSON post
(for DR 620 and 750)



Electrical shower
with tank 40 litres (standard)



Stainless steel bathing ladder S-4



Stern platform with telescopic
stainless steel bathing ladder S-5/7



Over pressure safety valve
(depending on model)



Tube reinforcement and handles
(diver)



Comfort and safety on board your Valiant

Consult your agent to ensure that these accessories are compatible with your boat

Bow side lockers for V620 or V750 Sport



Sundeck (different models available)



Front removable table on stainless steel foot (optional)



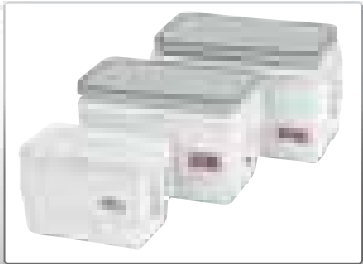
Sundeck storage bag



Fixing system for tank



Marine ice chest (various models available)



Ice chest tie down kit



Standard equipment (pump, telescopic paddles and repair kit)



Electric pump (12V or 220V)



Mooring anchor for small inflatables



Automatic or manual life jackets



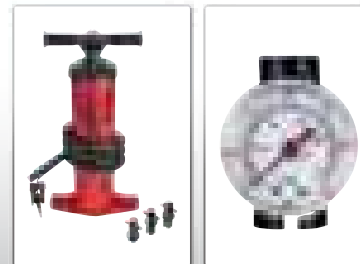
Ski jacket & special child's jacket



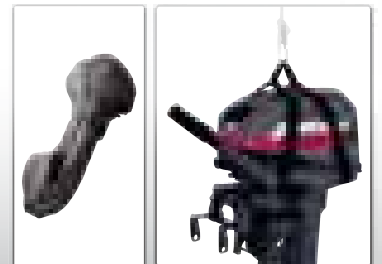
Wakeboard & water skis



Hand pump/pressure gauge



Engine cover and lifting straps for outboard



Technical characteristics

CE category	Length overall (m)	Beam overall (m)	Length inside (m)	Beam inside (m)	Tube diameter (m)	Number of chambers	Max. capacity weight (kg)	Max. capacity persons	Engine shaft type	Max. engine (Hp)	Minimum engine (Hp)	Max. weight engine (kg)	Total weight (excl. engine) (kg)	Fuel tank capacity (L)	Page of catalogue
-------------	--------------------	------------------	-------------------	-----------------	-------------------	--------------------	---------------------------	-----------------------	-------------------	------------------	---------------------	-------------------------	----------------------------------	------------------------	-------------------

VANGUARD

V64 TDI	C	6,42	2,51	3,70	1,36	0,56	5	1300	10	-	150	-	-	1085*	106	4-5
V64 Vazer	C	6,42	2,51	3,70	1,36	0,56	5	1300	10	-	100	-	-	956*	106	4-5
V64 3.0 MPI	C	6,42	2,51	3,70	1,36	0,56	5	1300	10	-	135	-	-	1085*	106	4-5
750 Cruiser	C	7,49	2,85	6,20	1,60	0,60	7	2300	22	XL	300	115	294	1170	300	6-7
620 Cruiser	C	6,15	2,50	4,50	1,30	0,57	5	1850	17	L	150	90	231	618	106	8-9
750 Sport	C	7,49	2,85	6,20	1,60	0,60	7	2300	22	XL	300	115	294	1065	300	10-11
620 Sport	C	6,15	2,50	4,50	1,30	0,57	5	1850	17	L	150	90	231	504	106	12-13
570 Sport	C	5,65	2,40	4,00	1,30	0,55	5	1450	15	L	135	60	195	446	106	14-15
520 Sport	C	5,20	2,18	3,94	1,10	0,48	4	1150	9	L	100	40	181	320	73	14-15
450 Sport	C	4,50	1,94	3,40	0,98	0,48	3+1	1000	7	L	60	25	112	205		16-17
400 Sport	C	4,00	1,77	2,85	0,85	0,46	3+1	800	6	L	40	13,5	106	202		16-17

DR

750	C	7,49	2,85	6,20	1,60	0,60	7	2300	22	1XL-2L	300	115	350	773	300	18-19
620	C	6,15	2,50	4,50	1,30	0,57	5	1850	17	L	150	90	231	486	106	18-19
570	C	5,65	2,40	4,00	1,30	0,55	5	1450	15	L	135	60	195	375	106	20-21
520	C	5,20	2,18	3,94	1,10	0,48	4	1150	9	L	100	40	181	262	73	20-21
490	C	4,90	1,94	3,62	0,98	0,48	4+1	1100	8	L	80	30	181	185		22-23
450	C	4,50	1,94	3,40	0,98	0,48	3+1	1000	7	L	60	25	112	157		22-23
400	C	4,00	1,77	2,85	0,85	0,46	3+1	800	6	L	40	13,5	106	154		22-23

DYNAMIC

300 Tender	C	3,00	1,64	1,90	0,80	0,42	2	470	4	S	9,9	6	40	56		24-25
270 Tender	D	2,70	1,40	1,70	0,64	0,38	2	400	4	S	6	4	35	45		24-25
240 Tender	-	2,40	1,40	1,50	0,64	0,38	2	350	3	S	6	3	34	41		24-25
380 Open	C	3,80	1,64	2,55	0,80	0,42	3	600	5	S	20	10	55	77		24-25
340 Open	C	3,40	1,64	2,30	0,80	0,42	3	560	4	S	20	8	55	74		24-25
300 Open	C	3,00	1,64	1,90	0,80	0,42	2	470	4	S	9,9	6	50	59		24-25

*: Engine weight included

Equipments and accessories

		Consoles										Seats and backrests										Various																								
		Centre console S-3	Centre console S-4	Centre console S-5	Centre console S-6	Centre console S-6 Comfort	Centre console S-7	Centre console PT-5	Centre console PT-6	Centre console PT-7	Jockey console S-3	Double Jockey console S-5	Double Jockey console S-7	Seat with locker S-3	Seat with locker S-4	Seat with locker S-5	Leaning Post S-6	Leaning Post S-7D	Backrest PT-6D	Backrest PT-7D	Double modular seat	Single modular seat	Northstar 657 combined sounder/GPS	Hydraulic steering	Automatic bilge pump	Bathing ladder S-4	Platform with bathing ladder S-5	Diving platform with bathing ladder S-7	Bimini sunshade	Stainless steel bow SAMSON post	Rubber bottle rack (various models)	Deck shower	PVC keel protection	Navigation frame S-4	Navigation frame S-5	Navigation frame S-6/7	Fibreglass anchor bracket with stainless steel bow roller	Stainless steel ski mast	Bow sundeck + transport bag	Ice chest marine	Ice chest tie down kit	Mooring cover	Electric windlass + anchor	Cockpit table		
	V64 TDI			S																		S	S	S					O			O					S				O					
	V64 Vazer			S																		S	S	S					O			O					S				O					
	V64 3.0 MPI			S																		S	S	S					O			O					S				O					
	750 Cruiser					S									S							S	S	S			S		O			S				S	S		S		S	O	O			
	620 Cruiser					S																O	S	S		S			O			S				S	S				O					
	750 Sport					S									S							O	S	S			O		O			O	O			O	O	O		O		O	O		O	
	620 Sport			S													S					O	S	S		O			O			O	O			O	O	O		O	O	O	O			
	570 Sport					S									S							O	S	S		S			O			O				O		O	O	O	O	O				
	520 Sport			S											S								S	S		S			O			O				O		O	O	O	O	O				
	450 Sport		S												S									O				O			O			O				O	O	O	O	O				
	400 Sport		S												S									O				O			O			O					O	O	O	O				
	DR 750					O		O	O			O			O	O	O	O	O	O	O	O	S			O	O	O	O	O	O	O		O			O	O			O	O	O	O		
	DR 620				O			O	O			O					O	O	O	O	O	O	S		O		O	O	O	O	O	O		O			O	O			O	O	O	O		
	DR 570				O			O	O			O			O				O	O		O	S	O	O			O		O	O		O			O			O	O	O	O	O			
	DR 520			O				O				O			O				O	O		O	S	O	O			O		O	O		O			O			O	O	O	O	O			
	DR 490		O					O				O	O		O									O				O		O	O		O	O					O	O	O	O				
	DR 450		O									O	O		O									O				O		O	O		O	O					O	O	O	O				
	DR 400		O									O	O		O									O				O		O	O		O	O					O	O	O	O				
	300 Tender																																									O				
	270 Tender																																									O				
	240 Tender																																									O				
	380 Open	F							T			F																														O				
	340 Open	F							T			F																														O				
	300 Open	F							T			F																														O				

S: Standard equipment - O: Optional equipment - X: Sport pack - F: Family pack



www.valiant-boats.com

Remember - Life vests float. You don't. Always use your engine's safety stop lanyard.

© 2008 Brunswick Marine in EMEA. All Rights Reserved. GB - Printed in Belgium. Part #: 90-883411-09

Brunswick Marine in EMEA continuously explores means to improve the products it designs, manufactures and distributes. Every effort is made to produce sales and service literature which is current. Changes to specifications of engines, boats and accessories are ongoing. This brochure should not be regarded as a precise guide to the latest specifications. This brochure is also not an offer for sales of any particular engine, boat or accessory. Distributors and dealers are not agents of Brunswick Marine in EMEA or one of its affiliates and they have no authority to bind Brunswick Marine in EMEA by any express undertaking or representation, including but not limited to representations of product, sales, applications or service nature. Not all products are available in all countries and some are available only in limited quantities. Some products shown in this catalogue are equipped with optional accessories. Please see your local dealer. Visit <http://www.BrunswickMarineEMEA.com>



BRUNSWICK MARINE in EMEA
ISO 9001 - 2000 CERTIFIED

The quality system of
Brunswick Marine in EMEA
is ISO 9001:2000 certified



BRUNSWICK
GENUINE INGENUITY