

PROFESIONAL



VALIANT
ADVANCED INFLATABLE CRAFT

Bad Weather. Good Boat.

When your job requires working on the water, you need a boat that can take you out despite wind and waves and bring you home safely at the end of the day. We make each and every commercial Valiant with that goal in mind.

We start with hulls designed to slice through rough water with minimal effort and superior comfort. Then we build

each commercial Valiant tube using heavy duty materials including SOLAS approved AKRON TPE— exclusively developed for Valiant commercial boats. Our AKRON TPE® fabric is SOLAS certified. It has extremely high abrasion resistance— five times greater than Neoprene/ Hypalon. It features resistance to pollution, deterioration caused by UV rays and superior puncture resistance.*

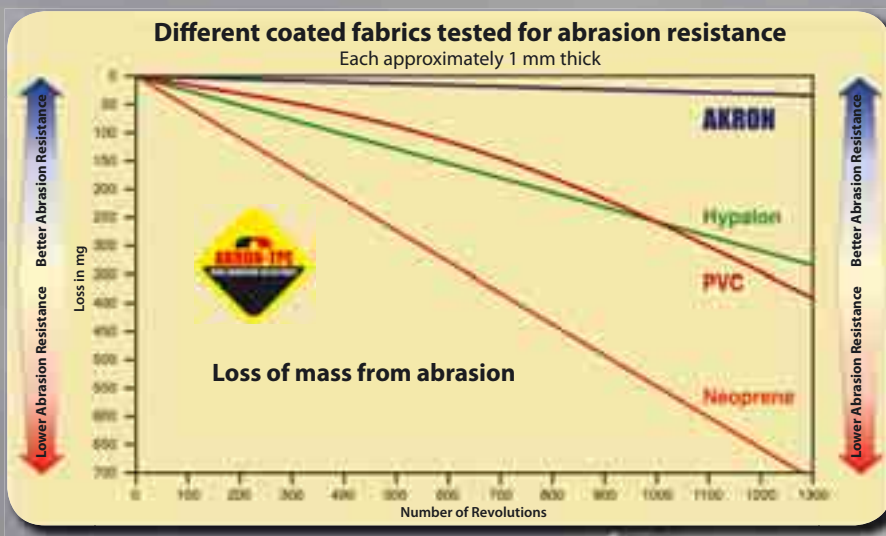
Other standard commercial features include double rubbing strake fenders, non-slip applied to the tubes and molded into the gelcoated decks, and heavy duty inflation valves and pressure relief valves.

Valiant offers a range of customizable platforms from 4 to 12 meters. You design the interior based on your specific application and we'll take care of building you a custom boat specifically manufactured for commercial use.

Even after you take delivery of your Valiant you can be confident that the company that built your craft stands behind it with one of the best factory warranties in the industry. In fact, some boat companies expressly exclude boats in commercial applications from their warranties. Not Valiant. We're so confident in our product that we stand behind every boat we make. We put it in writing and we put it as one of the first things you'll find in this catalog.

Tough jobs require durable equipment. Make sure your boat lives up to your expectations.

When people depend on you, you can depend on Valiant.



* AKRON TPE complies with the U.S. Department of Defense MIL B-53067 and has RINA CCE36599/1 certification for use in the manufacture of rescue craft.



VALIANT WARRANTY

1. Coverage

The Valiant craft (described below as the “product”) are warranted for the use for which each model has been defined, from the date of purchase for a period of:

- 1.1 **Two years** against any material defects, workmanship of the craft or its components, this covering the Tube, GRP Hull, Parts and Accessories.
- 1.2 **Five years** against aging, cracking or porosity of the PVC inflatable tube material, which could affect its performance.
- 1.3 **Ten years** against aging, cracking or porosity of the Akron TPE inflatable tube material, which could affect its performance.
- 1.4 **Five years** against welding failures of the main thermowelded seams of the inflatable tube according to the ISO 6185 standards, this covering both PVC and Akron TPE tubes.

2. Conditions

- 2.1 The warranty will only apply once Valiant has received the Warranty Registration Card, via mail or Internet, duly filled in with all the relevant information within 30 days of the date of purchase.
- 2.2 No warranty claim will be accepted without the Warranty Registration Card or Purchase Invoice.
- 2.3 To benefit from warranty service the purchaser is required to contact an authorized Valiant dealer or service station.
- 2.4 Warranty repairs will be carried out by the authorized Valiant dealer or service station once the claim has been pre-authorized by the Valiant Warranty Department.
- 2.5 This warranty requires the inspection of the craft by an authorized Valiant dealer or service station at 12 months and 24 months respectively. If the purchaser is not able to carry out these inspections, the purchaser must inform Valiant by written statement and Valiant will handle the organization of the revision. The purchaser will be invoiced for the transport charges and any other expenses linked to the revision unless otherwise stated.

Important

The warranty is limited to the repair and replacement of defective parts, replacement unit, or refund of the product in the event that Valiant and the authorized dealer/ service station have come to a mutual decision. In no case is the value of the claim to exceed the value of the product.

In the event that the complete unit needs to be replaced, there will be a depreciation value of 20% per annum following the 3-year warranty period.

TABLE OF CONTENTS

3 **WARRANTY**

4 **CLIENT LIST**

5 **VALIANT ADVANTAGE**

6 **DR 400/450/490**

8 **DR 520/570**

10 **DR 620/750**

12 **PT 520/650/750/850**

14 **PT-SD 650/750/850**

16 **RESCUE/SPECIAL SERIES**

22 **ACCESSORIES**

CLIENT LIST

Valiant boats are used by some of the finest organizations around the world. This is a list of some of our professional clients.

ANGOLA

Bombeiros de Angola
Luanda Fire Brigade
Marinha de Guerra Angolana
Navy

AUSTRIA

Water Rescue Services
Austrian Army

BELGIUM

Croix Rouge
Sapeurs Pompiers de Liege
Sapeurs Pompiers d'Anvers
Sapeurs Pompiers de Bruxelles

CROATIA

Navy Special Forces

EGYPT

Red Sea SAR

FRANCE

Sapeurs Pompiers d'Aurillac
Sapeurs Pompiers de Saint Dizier
Sapeurs Pompiers de Marseille
Pompiers de Paris
Gendarmerie Nationale
Societe Nationale de Sauvetage en Mer de Pirou
Marine Nationale Francaise
Conseil Superieur de la Peche
Societe des Regates Rochelaises

GERMANY

Deutsche Feuerwehr
Deutsches Rotes Kreuz
Deutsche Lebens-Rettungs-Gesellschaft (DLRG)
Technisches Hilfswerk (THW)

HUNGARY

Special Police Forces

PORTUGAL

Marinha de Guerra Portuguesa
I.S.N. – Instituto de Socorros a Náufragos
Polícia Marítima de Lisboa
Polícia Marítima de Leixões
Polícia Marítima Portuguesa
Brigada Fiscal Portuguesa
Bombeiros de Portugal

Bombeiros de Póvoa
de Varzim
Bombeiros de Ponte
de Lima
Bombeiros de Valença
Bombeiros de Pinhel
Bombeiros de Cete
Bombeiros do Porto
Bombeiros de Barcelos
Bombeiros de Portel
Bombeiros de Lamego

Bombeiros de Pinhão
Bombeiros de Viseu
Bombeiros de S. João
da Pesqueira
Bombeiros de Mirandela
Bombeiros de Miranda
do Douro
Bombeiros de Sendim
Bombeiros do Montijo
Bombeiros de Cabo Ruivo
Bombeiros da Moita

SPAIN

National Organizations

Armada Española
Cuerpo Nacional de Bomberos
Centro de Buceo de la Armada (C.B.A.)
Cruz Roja Española
Guardia Civil Costera
Guardia Civil del Mar
Aduanas (Agencia Tributaria)
Ministerio de Agricultura Pesca y Alimentación
Protección Civil
Salvamento Marítimo (SASEMAR)

Civil Protection

Coruna	Barcelona	Gerona
Oviedo	Valencia	Malaga
Gijon	Huelva	Castellon
Santander	Cadiz	Alicante
San Sebastian	Almeria	Baleares

Red Cross

Alaior (Menorca)	San Pedro del Pinatar (Murcia)
Bermeo (Vizcaya)	Cadiz
Barcelona	Huelva
Sevilla	Gijon
Gandia (Valencia)	Santander
Roquetas (Almeria)	

Fire Brigade

Bilbao	Sevilla
Vitoria	Malaga
Barcelona	Alicante
Zaragoza	Valencia

THE NETHERLANDS

Police

UNITED KINGDOM

Metropolitan Police
Avon Fire and Rescue
River Bailiff Maldon District Council
Rescue Boat Fleet for Royal Corinthian Yacht Club
Rescue Boat Fleet for Royal Burnham Yacht Club
Rescue Boat for Graffham Water
Support Boats for Southwest Water



THE VALIANT ADVANTAGE



Presumably, you are already aware of the multiple advantages of an inflatable boat in the commercial environment over exclusively fiberglass or aluminum craft. You already know the reduced weight means improved fuel economy. You also already know that the inflatable tubes provide superior lateral stability and shock absorption in rough seas and tight maneuvering. They function as non-marring fenders in boarding and rescue situations. They are more forgiving, less susceptible to impact damage and easier on dive tanks, expensive equipment and crew. But let's take a minute to explore why Valiant is the only inflatable of choice.

Valiant commercial boats are not cleverly disguised recreational boats. We offer a dedicated series of commercial boats with unique construction and specific features vital to success in the rigorous commercial environment. We consult customers and our experienced marine professionals on staff to determine the particular features and options by model.

Each boat is built to its specific application. That means that our design team frequently customizes the platform's interior to achieve a specific mission. Consoles, bench seats and bottle racks can be arranged depending on the boat's ultimate assignment and projected load. Rarely are any two Valiant commercial boats alike.

Our semi-rigid hulls are laminated using a method from the aeronautical industry to ensure a precise strength to

weight ratio. The VITECH® process ensures that the material we use in each hull is exactly the right amount so that it does not add unnecessary weight which reduces speed and fuel economy.

Our THERMOWELDING® process combines fusion with calendaring under high pressure to assemble the different parts of the tubes in conjunction with internal and external seam reinforcements; this combination ensures the strength of the weld surpasses the strength of the actual material.

And because we have achieved the prestigious **ISO 9001:2000 Certification** relative to the design, manufacture and repair management for semi-rigid inflatable boats, you can rest assured your commercial Valiant is the result of documented processes and methods created to meet or exceed the highest standards.



ISO 9001:2000

Depending on the projected draft and range requirements for your mission, you have a choice of propulsion—ranging from Mariner and Mercury outboard engines to jet power and gas and diesel stern drives.

There are hundreds of reasons why you should make a Valiant your next commercial boat. But don't take our word for it: just ask some of the people on the preceding page.



DR 400/450/490



DR 490

Our Diving & Rescue (DR) series is designed to satisfy the rigorous demands of dive, rescue and other professional applications. The design of each hull has been carefully developed to address a variety of different tasks and sea conditions while maintaining a balance of seaworthy performance, speed, load carrying capacity, stability

and running comfort. The DR series features robust manufacturing either with PVC or AKRON TPE material and extra strong accessories.

The compact DR 400/450/490 models feature superior portability, quick planing characteristics and low fuel consumption. Big performance in a small package.

- Easy to trailer, launch and retrieve
- Modified V-hull:
 - Superior stability
 - Quick planing
 - Low fuel consumption
- Laminated non-slip finish on deck
- Non-slip finish on top of the tubes
- Unsinkable hull construction

CHARACTERISTICS	DR-400	DR-450	DR-490
CE Category	C	C	C
Length overall	4.00 m	4.50 m	4.90 m
Length inside	2.85 m	3.40 m	3.62 m
Beam overall	1.77 m	1.94 m	1.94 m
Beam inside	0.85 m	0.98 m	0.98 m
Tube diameter	0.46 m	0.48 m	0.48 m
Number of chambers	3+1	3+1	4+1
Max. capacity weight	800 kg	1000 kg	1100 kg
Max. capacity persons	6	7	8
Engine shaft type	L	L	L
Max. engine	40 H.P. - 29.4 kW	60 H.P. - 44.1 kW	80 H.P. - 58.8 kW
Recommended engine	25 H.P. - 18.3 kW	40 H.P. - 29.4 kW	60 H.P. - 44.1 kW
Minimum engine	13.5 H.P. - 9.9 kW	25 H.P. - 18.3 kW	30 H.P. - 22.0 kW
Maximum engine weight	106 kg	112 kg	181 kg
Total boat weight (Exc. engine)	142 kg	163 kg	213 kg
Dimensions	3.66 x 1.52 x 0.88 m	4.07 x 1.56 x 0.88 m	4.43 x 1.56 x 0.90 m
Telescopic Paddles	2	2	2
Fuel tank	-	-	-
Electric bilge pump	-	-	-

Standard Fittings

- Bow cleat (on tube)
- Deck drain plug
- External lifelines
- Internal lifelines
- Lifting handles
- Mooring eye
- Rubbing strake
- Safety relief valves
- Stern Lifting Eyes
- Stern towing eyes
- Tube reinforcements

Standard Accessories

- Air pump
- Bow locker
- Telescopic paddles (2 each)
- Tube Repair kit

Optional Accessories

- Boarding ladder S-4
- Boat cover
- Bow roller
- Double Jockey Console S-5
- Jockey S-3
- Ice chest marine 25
- Ice chest marine 48
- Ice chest tie down kit
- Navigation frame S-4



DR 400



DR 450



DR 490

DR 520/570



For heavier loads and greater passenger capacity, consider the DR 520/570 series. Still remarkably portable and lightweight, these models feature wide beams for greater interior room, and enhanced lateral stability.

The hull's deep-V forward transitions to a keel pad aft. This combination affords a smooth ride while also promoting quick planing and low fuel consumption.

Integral fuel tanks in the 520 and

570 provide increased range capability and free up deck space for passengers and gear.

Storage is available in the large bow locker. At the stern there is an inspection hatch which affords direct access to the bilge and the standard automatic electric bilge pump. These are the smallest models in the DR series which can be equipped with an optional center console and backrest seat for piloting from a standing position.

- Easy to trailer, launch and retrieve
- Deep V-hull forward, keel pad aft
 - Slices rough water
 - Superior stability
 - Quick planing
 - Low fuel consumption
- Integral fuel tank yields clear decks
- Bow locker
- Stern bilge pump inspection hatch
- Bench seat or leaning post options

CHARACTERISTICS	DR-520	DR-570
CE Category	C	B/C
Length overall	5.20 m	5.65 m
Length inside	3.94 m	4.00 m
Beam overall	2.18 m	2.40 m
Beam inside	1.10 m	1.30 m
Tube diameter	0.48 m	0.55 m
Number of chambers	4+1	5+1
Max. capacity weight	1,150 kg	1,450 kg
Max. capacity persons	9	15
Engine shaft type	L	L
Max. engine	100 H.P. - 73.5 kW	135 H.P. - 99.3 kW
Recommended engine	80 H.P. - 58.8 kW	100 H.P. - 73.5 kW
Minimum engine	40 H.P. - 29.4 kW	60 H.P. - 44.1 kW
Maximum engine weight	185 kg	195 kg
Total boat weight (Excl. engine)	262 kg	371 kg
Dimensions (Packed)	4.76 x 1.60 x 0.94 m	5.09 x 1.90 x 0.97 m
Telescopic Paddles	2	2
Fuel tank	73 Lts	106 Lts
Electric bilge pump	1,892 LPH	1,892 LPH

Standard Fittings

- Bow cleat (on tube)
- Bow locker
- Deck drain plug
- Double rubbing strake
- External lifelines
- Hull drain socket
- Integral fuel tank
- Internal lifelines
- Lifting handles
- Mooring eye
- Safety relief valves
- Stern Lifting Eyes
- Stern towing eyes
- Tube reinforcements

Standard Accessories

- Air pump
- Automatic electric bilge pump
- Telescopic paddles (2 each)
- Tube Repair kit

Optional Accessories

- Backrest seat PT-7M
- Folding backrest seat S-5
- Folding backrest seat S-6
- Single modular seat
- Boarding ladder S-4
- Dive ladder S-5
- Boat cover
- Bow lifting eyes
- Bow roller
- Center console PT-5
- Double jockey console S-5
- Ice chest tie down kit
- Ice chest Marine 25
- Ice chest Marine 48
- Navigation frame S-5
- Sundeck V-520
- Sundeck V-570



DR 520



DR 570



DR 570

DR 620/750



The largest models of the DR series, the DR 620 and 750 are also the most popular with professional divers. The modified hull design provides quick planing and a smooth ride even in rough conditions. It also affords room for a cavernous integral tank below deck, lowering the center of gravity for

optimum stability and promoting usable deck space.

At 106 and 300 liters respectively, these boats have ample range and tremendous load carrying capacities.

These models can be configured in a variety of ways with your choice of options.

- Strong, fast, agile and spacious
- Under deck fuel tanks:
 - Lower center of gravity (stable)
 - Clear deck for crew and gear
 - Superior range
- Customizable platforms
- Optional hatch to below decks hold



Optional triple jockey console

CHARACTERISTICS	DR-620	DR-750
CE Category	C	C
Length overall	6.15 m	7.49 m
Length inside	4.50 m	6.20 m
Beam overall	2.50 m	2.85 m
Beam inside	1.35 m	1.60 m
Tube diameter	0.57 m	0.60 m
Number of chambers	5	7
Max. capacity weight	1,750 kg	2,300 kg
Max. capacity persons	17	22
Engine shaft type	1 L	1 XL - 2 L
Max. engine	150 H.P. - 110.3 kW	300 H.P. - 220.6 kW
Recommended engine	115 H.P. - 84.6 kW	150 H.P. - 110.3 kW
Minimum engine	90 H.P. - 66.2 kW	115 H.P. - 84.6 kW
Maximum engine weight	231 kg	350 kg
Total boat weight (Excl. engine)	486 kg	773 kg
Dimensions (Packed)	5.00 x 2.00 x 1.20 m	6.50 x 2.30 x 1.50 m
Telescopic Paddles	2	2
Fuel tank	106 Lts	300 Lts
Electric bilge pump	1,892 LPH	1,892 LPH

Standard Fittings

- Bow cleat (on tube)
- Bow locker
- Deck drain plug
- Double rubbing strake
- External lifelines
- Hull drain socket
- Internal lifelines
- Lifting handles
- Mooring eye
- Safety relief valves
- Stern locker
- Stern towing eyes
- Tube reinforcements
- Under deck fuel tank

Standard Accessories

- Air pump
- Automatic electric bilge pump
- Telescopic paddles (2 each)
- Tube Repair kit

Optional Accessories

- Aluminium deck hatch
(std. DR-750, N/A DR-620)
- Backrest seat PT-7D
- Backrest seat PT-7M
- Backrest seat S-7
- Double modular seat
- Single modular seat
- Boat cover
- Bottle rack (4, 6, 8, 10 or 12 bottles)
- Bow lifting eyes
- Bow roller
- Center console PT-5
- Center console PT-6
- Center console PT-7
- Double jockey console S-7
- Triple jockey console
- Dive/Boarding ladder S-5
- Dive/Boarding ladder S-7
- Dive center diving ladder
(includes navigation frame)
- Tube mounted dive platform with
ladder
- Ice chest cushion marine 72
- Ice chest marine 72
- Ice chest tie down kit
- Navigation frame S-6/7



DR 620



DR 750



DR 750

PATROL 520/650/750/850



Originally designed for military applications, the Patrol Series addresses the needs of the most demanding users including rescue organizations, fire brigades and industrial activities which require the use of strong, durable, seaworthy, fast and safe craft. The design of the hull, with a deep-V from bow to stern and pronounced strakes, produces a smoother ride with superior tracking and dryness. This series offers

exceptional performance offshore under rough sea conditions.

- Deep-V hull, bow to stern
- Exceptional offshore performance
- Strakes enhance tracking and deflect spray- for a drier ride
- Hatch to below decks hold storage area (except PT-520)
- Customizable with many options

CHARACTERISTICS	PATROL-520	PATROL-650	PATROL-750	PATROL-850
CE Category	C	B/C	B/C	B
Length overall	5.28 m	6.50 m	7.49 m	8.50 m
Length inside	3.75 m	5.10 m	6.00 m	6.91 m
Beam overall	2.07 m	2.70 m	2.90 m	3.00 m
Beam inside	1.15 m	1.38 m	1.78 m	1.88 m
Tube diameter	0.50 m	0.56 m	0.56 m	0.56 m
Number of chambers	5	5	7	7
Max. capacity weight	1,850 kg	2,654 kg	3,176 kg	4,780 kg
Max. capacity persons	9	19	22	26
Engine shaft type	1 L	1 XL - 2 L	1 XXL - 2 XL	1 XXL - 2 XL
Max. engine	100 H.P. - 73.5 kW	150 H.P. - 110.3 kW	300 H.P. - 220.6 kW	500 H.P. - 367.8 kW
Recommended engine	80 H.P. - 58.8 kW	115 H.P. - 84.6 kW	200 H.P. - 147.1 kW	300 H.P. - 220.6 kW
Minimum engine	40 H.P. - 29.4 kW	100 H.P. - 73.5 kW	150 H.P. - 110.3 kW	200 H.P. - 147.1 kW
Maximum engine weight	181 kg	239 kg	600 kg	705 kg
Total boat weight (Excl. engine)	300 kg	610 kg	965 kg	1,160 kg
Dimensions (Packed)	4.77 x 1.80 x 0.94 m	5.75 x 2.30 x 1.50 m	6.50 x 2.30 x 1.50 m	8.00 x 2.60 x 1.60 m
Telescopic Paddles	2	2	2	2
Fuel tank	73 Lts	300 Lts	550 Lts	550 Lts
Electric bilge pump	1,892 LPH	1,892 LPH	1,892 LPH	1,892 LPH

Standard Fittings

- Bow cleat (on tube)
- Bow lifting eyes
- Bow locker
- Double rubbing strake
- Drain valves (only PT-520)
- Elephant trunk (ex. PT-520)
- Elephant trunk deck drains
- External lifelines
- Hull drain socket
- Internal lifelines
- Lifting handles
- Mooring eye
- Safety relief valves
- Stern lifting/towing points
- Tube reinforcements
- Under deck fuel tank
- Wide hold below deck (ex. PT-520)

Standard Accessories

- Air pump
- Aluminium hatch (ex. PT-520)
- Automatic electric bilge pump
- Telescopic paddles (2 each)
- Tube Repair kit

Optional Accessories

- Backrest seat PT-7M
- Backrest seat PT-7D
- Backrest seat S-7
- Double modular seat
- Single modular seat
- Boarding ladder
- Boat cover
- Bottle rack (4, 6, 8, 10 or 12 bottles)
- Bow roller
- Bow Samson post
- Center console PT-5, PT-6, PT-7
- Double jockey console S-5
- Double jockey console S-7
- Triple jockey console
- Flag mast (for navigation frame)
- Frame with self-righting device
- Keel protection (PVC)
- Keel protection (stainless steel)
- Larger capacity fuel tanks
- Navigation frame PT (ex. PT-520)
- Tube mounted dive platform with ladder
- Transom cap (stainless steel)



PT-520



PT-650 ISN



PT-750

PATROL-SD 650/750/850



The Patrol Series SD is designed to provide long range and superior fuel economy. Featuring the largest hulls in the patrol series, these boats can be customized with a choice of power options including jet, gas or diesel stern drive engines.

The motor box covering the inboard engine can be equipped with various

options to maximize the use of space in the cockpit.

The exceptional offshore performance combined with the increased range afforded by the stern drive propulsion makes the PT-SD series invaluable for military, rescue, and industrial applications where the nearest fuel stop is hundreds of miles away.

If you have a job that requires you to go the distance, the PT-SD series is designed to take you there and bring you back.

- Choice of gas, diesel stern drive or jet propulsion for extraordinary range and fuel economy
- Deep-V hull design, bow to stern
- Exceptional offshore performance
- Strakes enhance tracking and deflect spray- producing a drier ride
- Hatch to below decks hold
- Customizable platforms with a vast array of optional equipment

In 2001, a fleet of three Valiant PT-SD 750 boats equipped with MerCruiser 4.2 LDTronic engines conducted a successful 1000 mile North Atlantic crossing from Lisbon to the Azores without assistance or refueling. The trip took 47 hours.



CHARACTERISTICS	PT-SD 650	PT-SD 750	PT-SD 850
CE Category	B/C	B/C	B
Length overall	6.50 m	7.49 m	8.50 m
Length inside	5.10 m	6.00 m	6.91 m
Beam overall	2.50 m	2.84 m	3.00 m
Beam inside	1.38 m	1.78 m	1.88 m
Tube diameter	0.56 m	0.56 m	0.56 m
Number of chambers	5	7	7
Max. capacity weight	2,654 kg	3,176 kg	4,780 kg
Max. capacity persons	19	22	26
Engine shaft type	Inboard/Outdrive	Inboard/Outdrive	Inboard/Outdrive
Max. engine	250 H.P. - 183 kW	300 H.P. - 220 kW	500 H.P. - 366 kW
Recommended engine	115 H.P. - 84.5 kW	200 H.P. - 147 kW	250 H.P. - 183 kW
Minimum engine	90 H.P. - 66.2 kW	150 H.P. - 110 kW	150 H.P. - 110 kW
Maximum engine weight	500 kg	600 kg	600 kg
Total boat weight (Exc. engine)	610 kg	965 kg	1,160 kg
Dimensions	5.75 x 2.30 x 1.50 m	6.50 x 2.30 x 1.50 m	8.00 x 2.60 x 1.60 m
Telescopic Paddles	2	2	2
Fuel tank	300 Lts	500 Lts	500 Lts
Electric bilge pump	1,892 LPH	1,892 LPH	1,892 LPH

Standard Fittings

- Bow cleat (on tube)
- Bow lifting eyes
- Bow locker
- Double rubbing strake
- Engine compartment storage
- Engine selection
- External lifelines
- Hull drain socket
- Internal lifelines
- Lifting handles
- Mooring eye
- Safety relief valves
- Stern lifting/towing points
- Tube reinforcements
- Under deck fuel tank

Standard Accessories

- Air pump
- Aluminium hatch
- Automatic electric bilge pump
- Repair kit
- Telescopic paddles (2 each)

Optional Accessories

- Backrest seat PT-7M
- Backrest seat PT-7D
- Backrest seat S-7
- Double modular seat
- Single modular seat
- Boarding ladder
- Boat cover
- Bottle rack (4, 6, 8, 10 or 12 bottles)
- Bow roller
- Bow Samson post
- Center console PT-5, PT-6, PT-7
- Double jockey console S-5
- Double jockey console S-7
- Triple jockey console
- Flag mast (for navigation frame)
- Frame with self-righting device
- Keel protection (PVC)
- Keel protection (stainless steel)
- Larger capacity fuel tanks
- Navigation frame PT (ex. PT-520)
- Stern Sampson post
(requires stern platform)
- Stern Platform PT-SD
- Tube mounted dive platform with ladder
- Transom cap (stainless steel)



PT-SD 650



PT-SD 750



PT-SD 850

RESCUE SERIES



RB 400 and RB 450 are SOLAS approved models. Additionally, all other Valiant models can be configured as rescue boats based on your specific requirements.



As a rescue professional, your job entails going out on the water when most people are heading in. That's why you need a reliable Valiant. With unique options such as the self righting device shown in the test below, you can reduce the risk of being the one being rescued.

Because of the remarkable stability of Valiant boats, they are extremely difficult to invert. However, the conditions in which rescue boats are used are generally less than optimal. For that reason, Valiant's self righting device (tested below) is a smart option to choose.





PT-SD 1000



PT-SD 1000



PT-SD 1200



PT-SD 1200

Just in case you haven't found exactly what you need for your specific application, we offer the Special Series. While some manufacturers shy away from custom built boats, Valiant understands that the needs of the commercial market are truly unique.

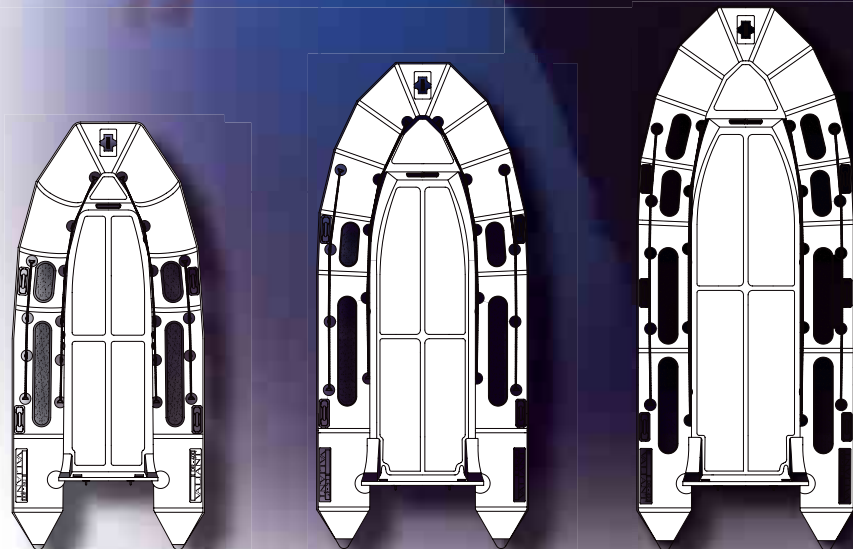
The Special Series includes boats with SOLAS certification for rescue, military and industrial applications. It also features uniquely configured designs on any of our platforms ranging up to 12 meters as featured at the top and in the left column of this page.

The specifications of your Special Series Valiant are limited only by your imagination. Tell us how you need to use your boat and we will help you design a custom Valiant to get the job done.

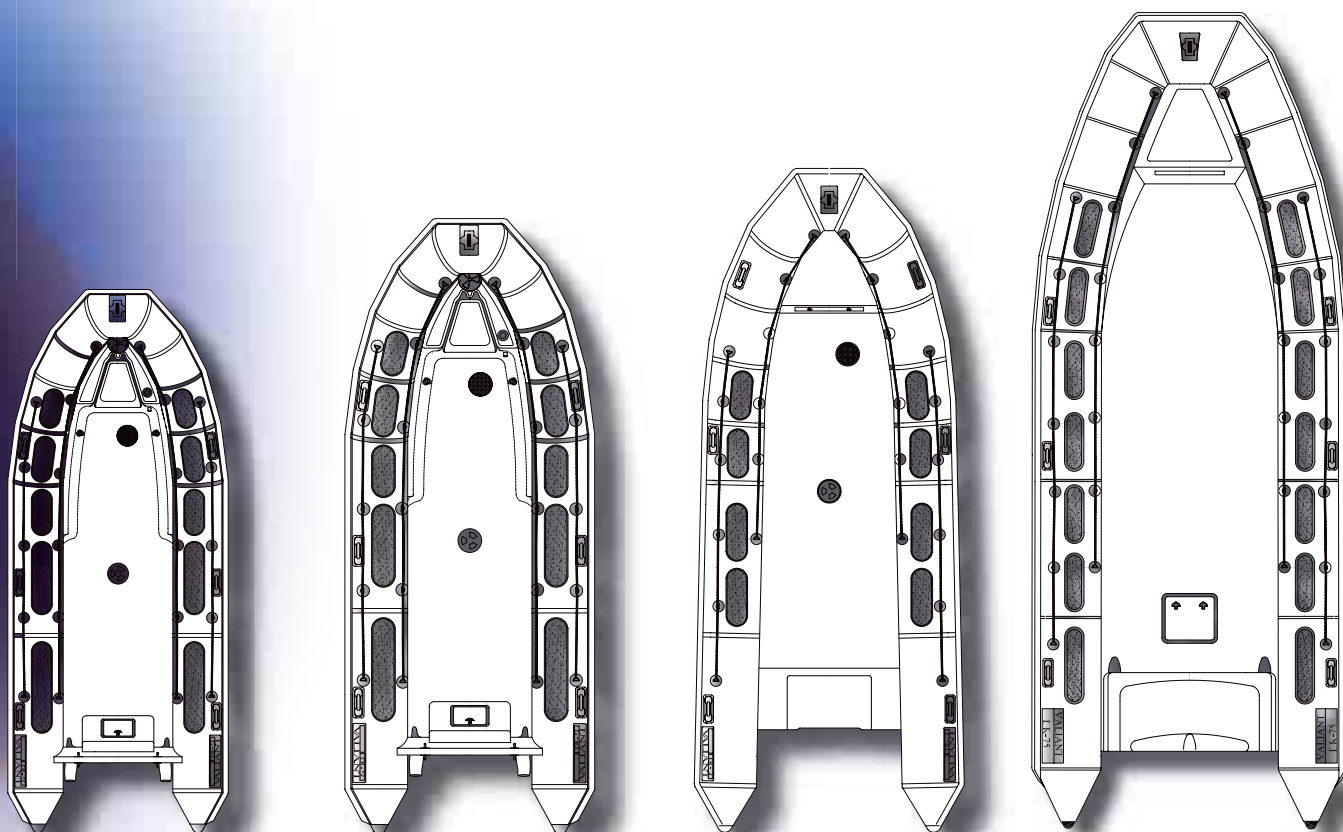


PT-650 ISN

DR SERIES SPECIFICATIONS



CHARACTERISTICS	DR-400	DR-450	DR-490
CE Category	C	C	C
Length overall	4.00 m	4.50 m	4.90 m
Length inside	2.85 m	3.40 m	3.62 m
Beam overall	1.77 m	1.94 m	1.94 m
Beam inside	0.85 m	0.98 m	0.98 m
Tube diameter	0.46 m	0.48 m	0.48 m
Number of chambers	3+1	3+1	4+1
Max. capacity weight	800 kg	1000 kg	1100 kg
Max. capacity persons	6	7	8
Engine shaft type	L	L	L
Max. engine	40 H.P. - 29.4 kW	60 H.P. - 44.1 kW	80 H.P. - 58.8 kW
Recommended engine	25 H.P. - 18.3 kW	40 H.P. - 29.4 kW	60 H.P. - 44.1 kW
Minimum engine	13.5 H.P. - 9.9 kW	25 H.P. - 18.3 kW	30 H.P. - 22.0 kW
Maximum engine weight	106 kg	112 kg	181 kg
Total boat weight (Exc. engine)	142 kg	163 kg	213 kg
Dimensions	3.66 x 1.52 x 0.88 m	4.07 x 1.56 x 0.88 m	4.43 x 1.56 x 0.90 m
Telescopic Paddles	2	2	2
Fuel tank	-	-	-
Electric bilge pump	-	-	-



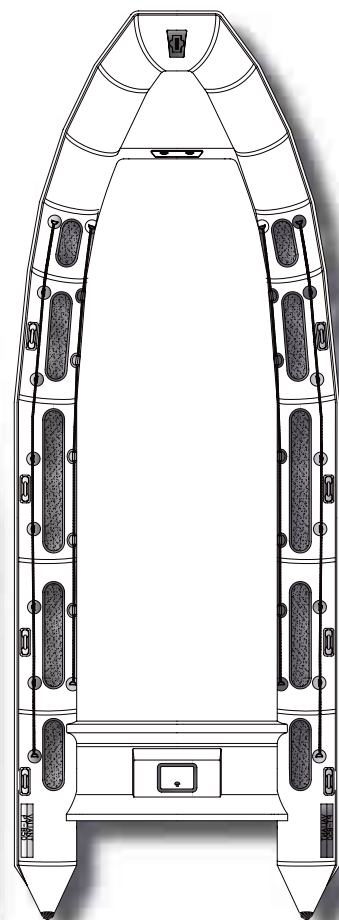
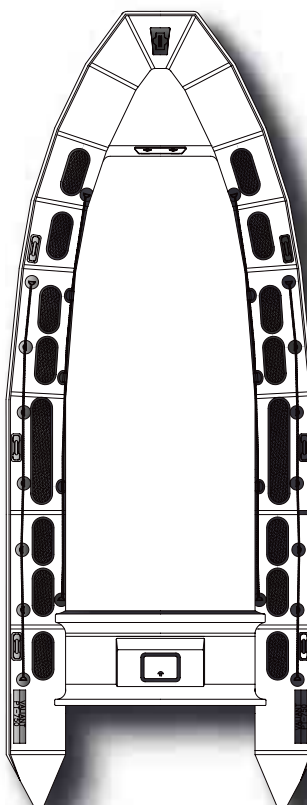
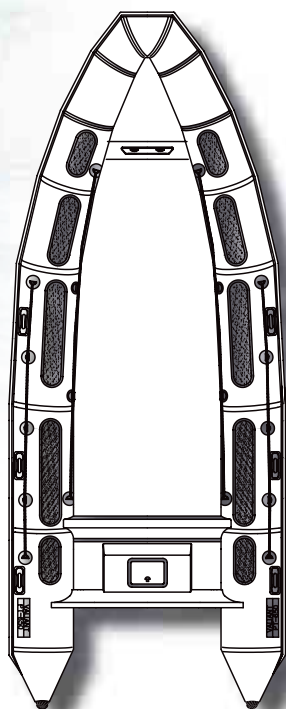
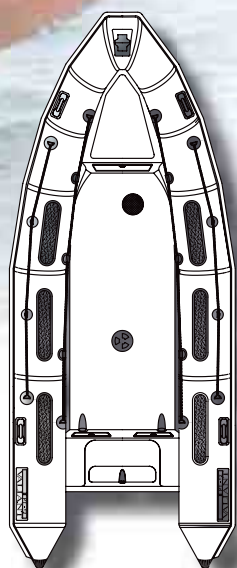
DR-520	DR-570	DR-620	DR-750
C	B/C	C	C
5.20 m	5.60 m	6.15 m	7.49 m
3.94 m	4.00 m	4.50 m	6.20 m
2.16 m	2.40 m	2.50 m	2.85 m
1.10 m	1.30 m	1.35 m	1.60 m
0.48 m	0.55 m	0.57 m	0.60 m
4+1	5+1	5	7
1,150 kg	1,450 kg	1,750 kg	2,300 kg
9	15	17	22
L	L	1 L	1 XL - 2 L
100 H.P. - 73.5 kW	135 H.P. - 99.3 kW	150 H.P. - 110.3 kW	300 H.P. - 220.6 kW
80 H.P. - 58.8 kW	100 H.P. - 73.5 kW	115 H.P. - 84.6 kW	150 H.P. - 110.3 kW
40 H.P. - 29.4 kW	60 H.P. - 44.1 kW	90 H.P. - 66.2 kW	115 H.P. - 84.6 kW
185 kg	195 kg	231 kg	350 kg
262 kg	371 kg	486 kg	773 kg
4.76 x 1.60 x 0.94 m	5.09 x 1.90 x 0.97 m	5.00 x 2.00 x 1.20 m	6.50 x 2.30 x 1.50 m
2	2	2	2
73 Lts	106 Lts	106 Lts	300 Lts
2,700 LPH	2,700 LPH	2,700 LPH	2,700 LPH

Specific measurements are approximations and are subject to change. Valiant reserves the right to change specifications and modify/discontinue models, equipment and prices without obligation.

PT SERIES SPECIFICATIONS



CHARACTERISTICS	PT-SD 650	PT-SD 750	PT-SD 850
CE Category	B/C	B/C	B
Length overall	6.50 m	7.49 m	8.50 m
Length inside	5.10 m	6.00 m	6.91 m
Beam overall	2.50 m	2.84 m	3.00 m
Beam inside	1.38 m	1.78 m	1.88 m
Tube diameter	0.56 m	0.56 m	0.56 m
Number of chambers	5	7	7
Max. capacity weight	2,654 kg	3,176 kg	4,780 kg
Max. capacity persons	19	22	26
Engine shaft type	Inboard/Outdrive	Inboard/Outdrive	Inboard/Outdrive
Max. engine	250 H.P. - 183 kW	300 H.P. - 220 kW	500 H.P. - 366 kW
Recommended engine	115 H.P. - 84.5 kW	200 H.P. - 147 kW	250 H.P. - 183 kW
Minimum engine	90 H.P. - 66.2 kW	150 H.P. - 110 kW	150 H.P. - 110 kW
Maximum engine weight	500 kg	600 kg	600 kg
Total boat weight (excl. engine)	610 kg	965 kg	1,160 kg
Dimensions (Packed)	5.75x2.30x1.50m	6.50x2.30x1.50m	8.00x2.60x1.60m
Telescopic Paddles	2	2	2
Fuel tank	300 Lts	550 Lts	550 Lts
Electric bilge pump	2,700 LPH	2,700 LPH	2,700 LPH



PT-520	PT-650	PT-750	PT-850
C	B/C	B/C	B
5.20 m	6.50 m	7.49 m	8.50 m
3.75 m	5.10 m	6.00 m	6.91 m
2.22 m	2.50 m	2.84 m	3.00 m
1.15 m	1.38 m	1.78 m	1.88 m
0.50 m	0.56 m	0.56 m	0.56 m
5	5	7	7
1,850 kg	2,654 kg	3,176 kg	4,780 kg
9	19	22	26
1 L	1 XL - 2 L	1 XXL - 2 XL	1 XXL - 2 XL
100 H.P. - 73.5 kW	150 H.P. - 110.3 kW	300 H.P. - 220.6 kW	500 H.P. - 367.8 kW
80 H.P. - 58.8 kW	115 H.P. - 84.6 kW	200 H.P. - 147.1 kW	300 H.P. - 220.6 kW
40 H.P. - 29.4 kW	100 H.P. - 73.5 kW	150 H.P. - 110.3 kW	200 H.P. - 147.1 kW
181 kg	239 kg	600 kg	705 kg
300 kg	610 kg	965 kg	1,160 kg
4.77 x 1.80 x 0.94 m	5.75 x 2.30 x 1.50 m	6.50 x 2.30 x 1.50 m	8.00 x 2.60 x 1.60 m
2	2	2	2
73 Lts	300 Lts	550 Lts	550 Lts
2,700 LPH	2,700 LPH	2,700 LPH	2,700 LPH

Specific measurements are approximations and are subject to change. Valiant reserves the right to change specifications and modify/discontinue models, equipment and prices without obligation.

ACCESSORIES

CONSOLES

You can customize your Valiant commercial boat with dozens of options and accessories based on your specific application. A few of our more popular options are shown here and throughout this catalog, but many others are available.

Contact your local Valiant dealer for more information regarding the vast array of options available to you.



CENTER CONSOLE PT-5

HEIGHT: 1380 mm
WIDTH: 460 mm
DEPTH: 420 mm



CENTER CONSOLE PT-6

HEIGHT: 1510 mm
WIDTH: 765 mm
DEPTH: 430 mm



CENTER CONSOLE PT-7

HEIGHT: 1530 mm
WIDTH: 1000 mm
DEPTH: 775 mm

SEATS & BACKRESTS



BACKREST SEAT PT-7M

HEIGHT: 1000 mm
WIDTH: 540 mm
DEPTH: 435 mm



BACKREST SEAT PT-7D

HEIGHT: 1000 mm
WIDTH: 1040 mm
DEPTH: 435 mm



SINGLE MODULAR SEAT

HEIGHT: 1100 mm
WIDTH: 320 mm
DEPTH: 585 mm



DOUBLE MODULAR SEAT

HEIGHT: 1100 mm
WIDTH: 320 mm
DEPTH: 1150 mm

VARIOUS ITEMS, ICE CHESTS & CUSHIONS

From inflatable race buoys to boat saunshades, Valiant has the options and accessories to make your job a little easier.

Remember, if you don't see a specific option on this page or on the chart opposite this page, simply ask your local Valiant dealer for additional information.



BUOY 150

BUOY 195

BUOY 70

**CUSHION M-48
ICE CHEST
MARINE 48**



**ICE CHEST
MARINE 25**

**CUSHION M-72
ICE CHEST MARINE 72**



**BOW
SAMSON
POST**



**BOTTLE RACK
12-B**



**NAVIGATION FRAME PT
12-B**

**STERN SAMSON
POST**

		DIVE/RESCUE SERIES							PATROL SERIES						
		DR-400	DR-450	DR-490	DR-520	DR-570	DR-620	DR-750	PT-520	PT-650	PT-750	PT-850	PT-650SD	PT-750SD	PT-850SD
BOAT COVERS	Boat Cover V / DR-400	O													
	Boat Cover V / DR-450		O												
	Boat Cover V / DR-490			O											
	Boat Cover V/DR				O										
	Boat Cover V / DR-570					O									
	Boat Cover V 620 / DR 620						O								
	Boat Cover V / DR-750							O							
	Boat Cover PT-520								O						
	Boat Cover PT-650 / PT-650 SD									O			O		
	Boat Cover PT-750 / PT-750 SD										O			O	
	Boat Cover PT-850 / PT-850 SD											O			O
CONSOLES	Centre Console PT-5				O	O	O	O	O	O	O	O			
	Centre Console PT-6						O	O		O	O	O	O	O	O
	Centre Console PT-7									O	O	O	O	O	O
	Triple Jockey						O	O		O	O	O			
	Hydraulic Steering System														
SEATS & BACKRESTS	Backrest seat PT-7D						O	O		O	O	O	O	O	O
	Backrest seat PT-7M				O	O	O	O	O	O	O	O	O	O	O
	Double Modular Seat						O	O	O	O	O	O	O	O	O
	Single Modular Seat						O	O	O	O	O	O	O	O	O
VARIOUS	Aluminium Hatch						#	#		#	#	#	#	#	#
	Bimini Sunshade V/DR-520				O										
	Bimini Sunshade V/DR-570					O									
	Bimini Sunshade V/DR-620						O								
	Bimini Sunshade V/DR-750							O							
	Bottle Rack 12-B						O	O		O	O	O	O	O	O
	Bow Roller Black	O	O	O	O	O	O	O	O	O	O	O			
	Bow Roller Grey														
	Bow Samson Post									O	O	O	O	O	O
	Deck Shower Kit														
	Dive Centre Diving Ladder DR-620						O								
	Dive Centre Diving Ladder DR-750							O							
	Diving Ladder												O	O	O
	Flag Mast								O	O	O	O	O	O	O
	Frame with Self Righting Device									O	O	O	O	O	O
	PVC Keel Protection								O	O	O	O	O	O	O
	Keel Protection PT-650									O			O		
	Keel Protection PT-750/850										O	O		O	O
	Larger Capacity Fuel Tank									O	O	O			
	Navigation Frame PT 650									O			O		
	Navigation Frame PT 750										O			O	
	Navigation Frame PT 850											O			O
	Retractable Bow Roller														
	Bathing Platform V-620														
	Bathing Platform V-750														
	Stern Platform PT-SD												O	O	O
	Stern Samson Post												O	O	O
ICE CHESTS & CUSHIONS	Electric Ice Chest Kool Mate 40														
	Ice Chest Marine 25	O	O	O	O	O									
	Ice Chest Marine 48	O	O	O	O	O									
	Ice Chest Marine 72						O	O							
	Ice Chest Cushion Marine 48														
	Ice Chest Cushion Marine 72						O	O							
	Ice Chest Tie down kit	O	O	O	O	O	O	O							

#: Standard Equipment

O: Optional Equipment



VALIANT

ADVANCED INFLATABLE CRAFT

Valiant Boats - Apartado 38 - Vila Nova de Cerveira, 4924-909 - Portugal
 351.251.708.060 office
 351.251.708.069 fax
www.valiant-boats.com

Valiant is owned by Brunswick Corporation, the world's largest provider of boats and marine engines.
 Here are just a few of the other brands in the Brunswick Marine in EMEA, Inc. family:



Remember - Life vests float. You don't. Always wear a life vest while on board.



BRUNSWICK MARINE in EMEA
 ISO 9001 - 2000 CERTIFIED

The quality system of
 Brunswick Marine in EMEA
 is ISO 9001:2000 certified



© 2007 Brunswick Marine in EMEA. All Rights Reserved.

Brunswick Marine in EMEA continuously explores means to improve the products it designs, manufactures and distributes. Every effort is made to produce sales and service literature which is current. Changes to specifications of engines, boats and accessories are ongoing. This brochure should not be regarded as a precise guide to the latest specifications. This brochure is also not an offer for sales of any particular engine, boat or accessory. Distributors and dealers are not agents of Brunswick Marine in EMEA or one of its affiliates and they have no authority to bind Brunswick Marine in EMEA by any express undertaking or representation, including but not limited to representations of product, sales, applications or service nature. Not all products are available in all countries. Some products shown in this catalogue are equipped with optional accessories. Please see your local dealer. The technical characteristics described in this brochure are based on the application of the ISO 6185 standard and could conflict with different national regulations. We advise you to consult the official norms of each country. Due to the special condition of being foldable and collapsible, the weights and sizes of craft mentioned in this brochure are always approximate and can vary slightly. The company reserves the right to change the specifications of accessories and craft without previous notice. Some of the action photographs published in this catalogue may show a selection of accessories and equipment not included in the basic option or differ from the selection of accessories offered by Valiant.

visit <http://www.BrunswickMarineEMEA.com>